



**BUILT  
FOR YOUR  
WORLD**

# Taking on the world

**Dear Customer,**

Lift trucks carry the coffee we drink, the paper we write on, and the bricks that build our homes. Almost everything around us, from cocoa to car parts, has been transported by lift trucks at some time. They play an essential role in the logistics of international trade.

Since our humble beginnings in Sweden over 60 years ago, Konecranes Lift Trucks has risen to become a highly valued part of that global trade network, renowned for our quality design, advanced technology and innovative solutions that have transformed the heavy lifting business. And our lift trucks only exist because of our people, who personify our company with their expertise and tireless dedication.

Thank you for sharing your time with us in this book. We look forward to deepening our understanding of your world.

Sincerely,

A handwritten signature in white ink, appearing to read 'Andreas Falk', is positioned above the printed name.

ANDREAS FALK  
Senior Vice President, Business Unit Lift Trucks  
Konecranes


KONECRANES  
LIFT TRUCKS

**BUILT  
FOR YOUR  
WORLD**



**BUILT  
FOR YOUR  
WORLD**

© 2023 Konecranes. All rights reserved.

'Konecranes', 'TRUCONNECT' and  are either registered trademarks or trademarks of Konecranes.

This publication is for general informational purposes only. Konecranes reserves the right at any time, without notice, to alter or discontinue the products and/or specifications referenced herein. This publication creates no warranty on the part of Konecranes, express or implied, including but not limited to any implied warranty or merchantability or fitness for a particular purpose.

[kcliftrucks.com](http://kcliftrucks.com)  
[konecranes.com](http://konecranes.com)



# Table of contents

**YOUR WORLD**

- Built for your world .....8
- Konecranes lift trucks working hard worldwide .....10
- Eco-efficiency by default .....14
- Safety never ends .....20
- Top tips for improving safety.....22
- How to reduce your total cost of lift truck ownership.....24
- Smart Connected Lift Trucks.....26
- Get your Lifetime Advantage .....30
- Lift trucks for your specific needs .....36
- Branding your trucks.....38

**THE INDUSTRIES**

- Port and terminal .....42
- Intermodal and barge handling .....48
- Metals production.....52
- General manufacturing and bulk.....56
- Food .....60
- Paper and wood .....64
- Mining .....68
- Defense.....72
- Energy .....76

**OUR STORY**

- Not just lifting things, but entire businesses .....82
- Our history .....84
- We make lift trucks for your world .....86
- Our distributors: A true partnership .....88

**THE TRUCKS**

- Reach stackers.....92
- Forklifts .....94
- Empty container handlers .....96
- Laden container handlers.....98
- OPTIMA – A room with a view.....100
- Konecranes lift trucks models.....102
- Konecranes Liftace lift truck models.....106
- Attachments .....108
- Why choose Konecranes Lift Trucks?.....114



**YOUR  
WORLD**



YOUR WORLD

THE INDUSTRIES

OUR STORY

THE TRUCKS

# Built for your world

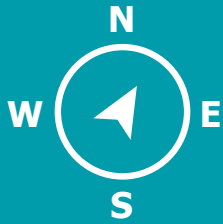
The circumstances of each lift truck driver can be very different: local environment, climate challenges, load capacities, height specifications and individual needs are just a few examples of how they can vary. By listening to you and observing your world, we can design and deliver a lift truck that is ideal for your requirements.

We understand that the world that matters most to you is your world, not ours. Here at Konecranes Lift Trucks, we listen to, learn from, design for, deliver to and support you to help you succeed in the unique conditions at your operations.

Our lift trucks are your lift trucks. They are built for your world.







# Konecranes lift trucks working hard worldwide

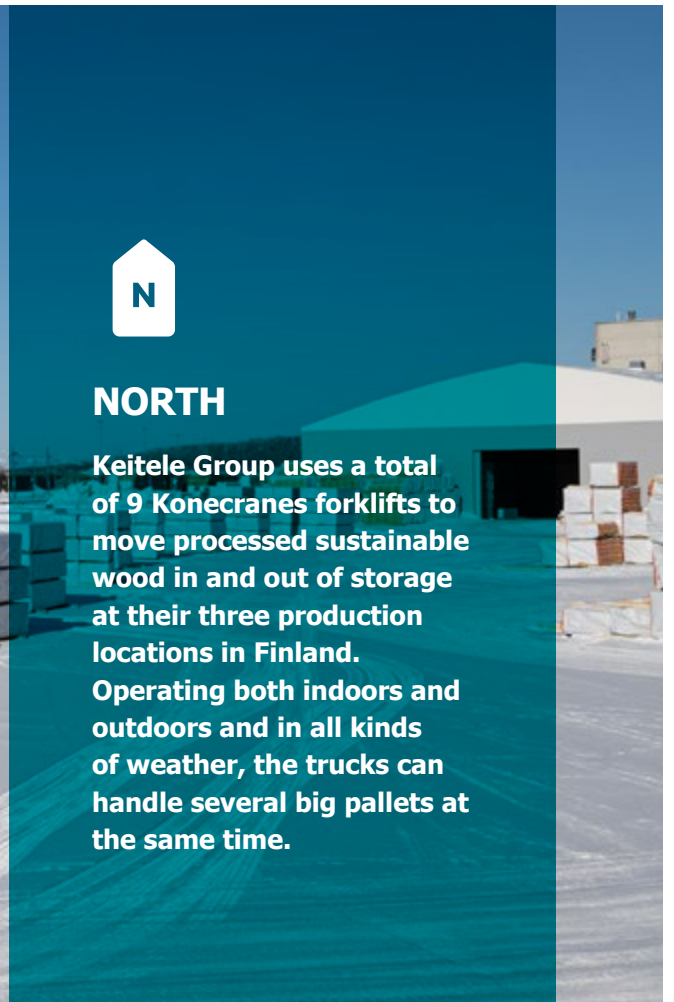
In all four corners of the globe, and everywhere in between, you can find Konecranes lift trucks playing key roles in logistics and materials handling.





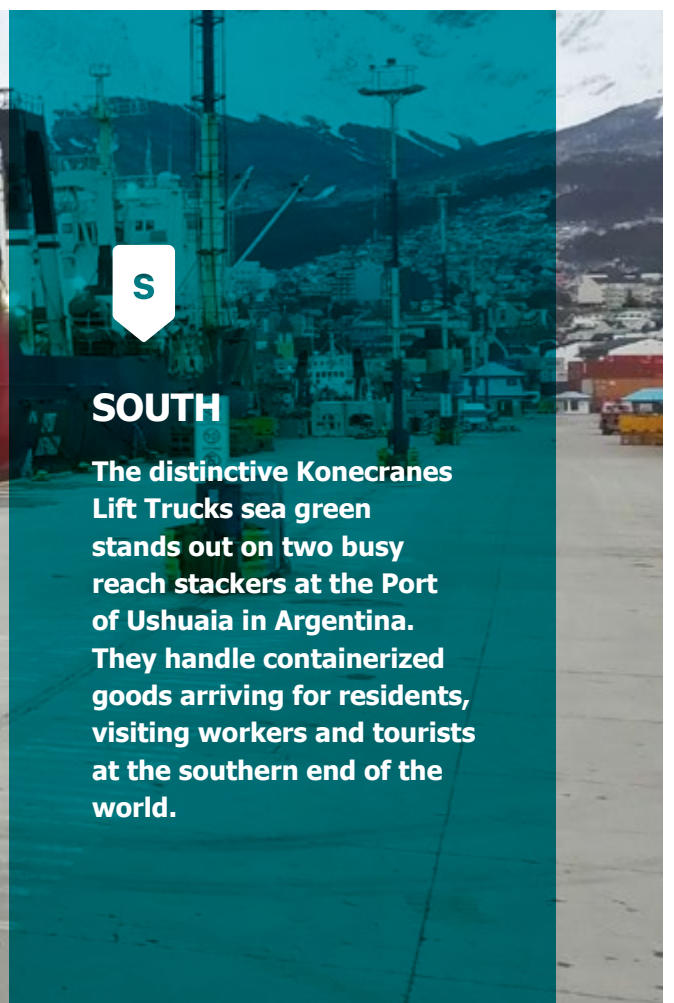
## NORTH

Keitele Group uses a total of 9 Konecranes forklifts to move processed sustainable wood in and out of storage at their three production locations in Finland. Operating both indoors and outdoors and in all kinds of weather, the trucks can handle several big pallets at the same time.



## SOUTH

The distinctive Konecranes Lift Trucks sea green stands out on two busy reach stackers at the Port of Ushuaia in Argentina. They handle containerized goods arriving for residents, visiting workers and tourists at the southern end of the world.



W

## WEST

In the Pacific Northwest of the United States, a Konecranes empty container handler is a key piece of equipment for Portland Container. Impressing operators with its reliability and fuel efficiency, it moves containers around their terminal yard for shipping, repair and storage.





## EAST

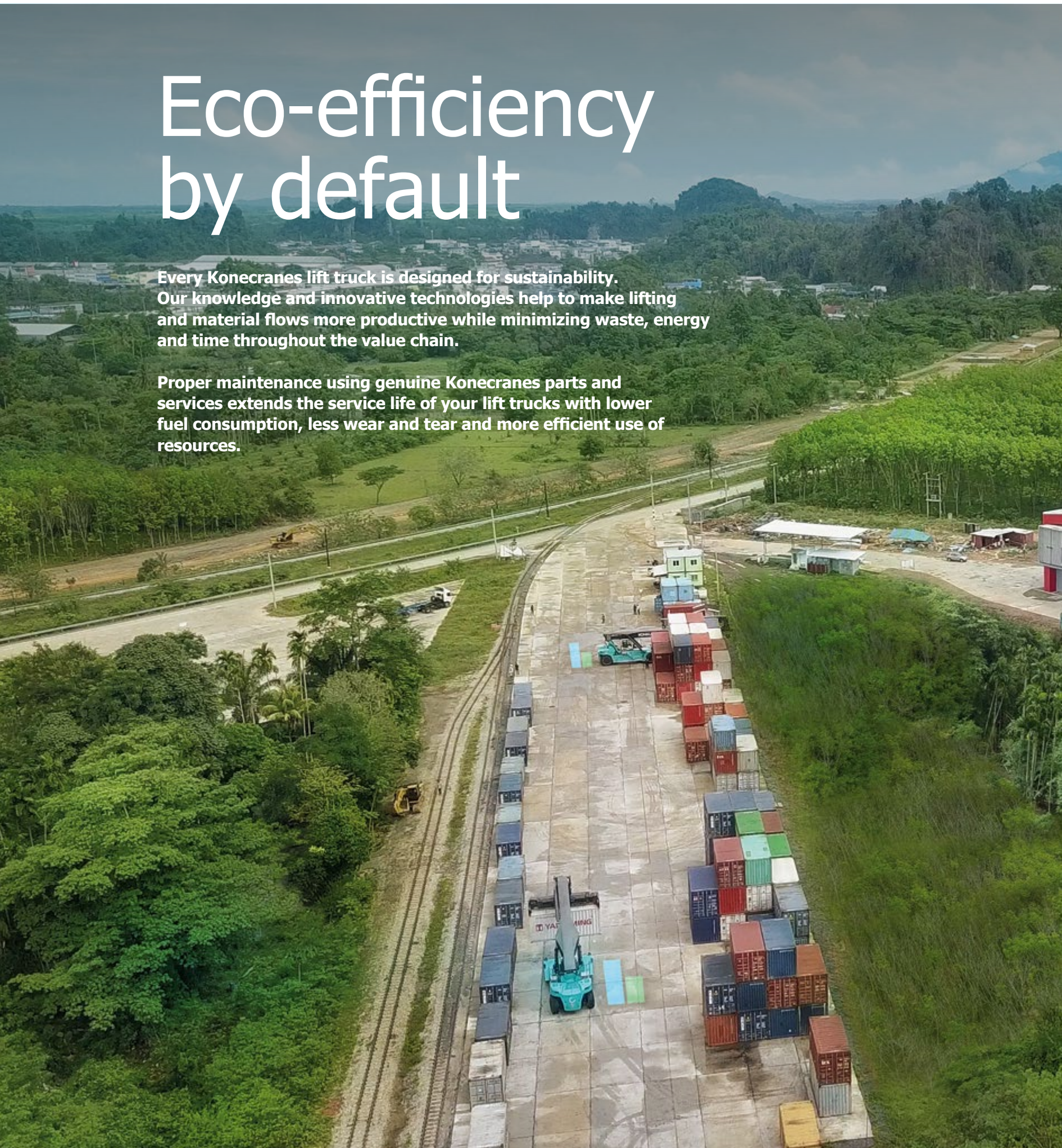
Seven lift trucks from Konecranes help to maintain tight shipping schedules for Sinotrans at the Port of Tianjin, the largest port in China. Three reach stackers handle laden containers while four empty container handlers move to and from storage to help keep the yard efficient.



# Eco-efficiency by default

Every Konecranes lift truck is designed for sustainability. Our knowledge and innovative technologies help to make lifting and material flows more productive while minimizing waste, energy and time throughout the value chain.

Proper maintenance using genuine Konecranes parts and services extends the service life of your lift trucks with lower fuel consumption, less wear and tear and more efficient use of resources.





**KONECRANES®**  
ecolifting™



## Less CO<sub>2</sub> per move

The Path to Ecolifting offers solutions that decrease your carbon footprint without reducing performance.

1. Change from conventional diesel to biofuel.
2. Make your diesel drives as eco-efficient as possible.
3. Take full advantage of the latest technology.
4. Step forward to fully electric equipment.

# Sustainability without compromise

KONECRANES®  
ecolifting™

Konecranes Ecolifting future-proofs your lift truck fleet by significantly decreasing your fuel consumption, on-site emissions and overall carbon footprint without reducing performance. Not only do our factories use renewable energy, but our trucks are available with a range of technical innovations and energy options so that you can choose the solution that best suits your world.



## Your lift trucks

### Power Drive

Konecranes Power Drive is a cost-efficient way to start reducing your emissions and fuel expenses. You get a new hydraulic system configuration and customized pump with an optimized driveline and a transmission with a lockup function. With up to 15% less fuel consumption and no difference in performance, this small investment would pay itself back in less than a year.

### Flow Drive

Konecranes Flow Drive reduces your fuel consumption by up to 25% with increased active operating time and always full performance. The innovative hydromechanical variable transmission sits in a new, unique engine compartment for a smoother and more dynamic driveline. Specialized driver training will help you and your team get the most out of your everyday operations.

### E-VER

The Konecranes E-VER electric forklift is a high-performance lifting machine just as powerful and productive as our standard lift trucks. Its fast-charge recyclable Li-ion battery means zero fuel, zero fumes and zero tailpipe emissions. If you prefer, use Battery as a Service (BaaS) for a flexible battery arrangement to suit your changing needs.

## Your energy sources

### HVO100

The latest generation of Konecranes lift trucks can use HVO100, a 100% renewable and fossil-free chemical copy of diesel fuel made mostly of vegetable oil. With almost the same characteristics as regular diesel, it reduces carbon emissions by up to 90%. This is a fast and economical transition that doesn't require changes to your local infrastructure.

### Electricity

Electric forklifts run on lithium-ion batteries, so you need access to a reliable electricity grid and convenient charging points around your site. Konecranes electric lift trucks emit no tailpipe emissions, and they reach their full eco-efficient potential when your local grid generates power from renewable sources.

## Your connectivity

### Smart Connected Lift Trucks

You can further improve your energy efficiency with a Smart Connected Lift Truck. TRUCONNECT® Remote Monitoring is a telematic solution over a secure Internet connection that collects data on safety alerts, fuel consumption, carbon emissions, battery performance and more. Customer portal yourKONECRANES.com keeps all your lift truck data in one central location. Adjust the settings on just one, a group, or every truck in your fleet, to optimize operations for the changing circumstances of your world.

By customer demand, all new Konecranes lift trucks are smart connected by default. You will see benefits from the very beginning.



# E-VER Electric Forklift

**For the ultimate in Ecolifting, choose the award-winning Konecranes E-VER electric forklift. Just as powerful and productive as our standard lift trucks, it runs on a fast-charge recyclable Li-ion battery for zero fuel, zero fumes and zero tailpipe emissions.**

**The truck also comes equipped with the latest digital solutions for monitoring performance, ergonomic controls designed for drivers and a slew of safety features.**

**1 Easy to drive**

Ergonomic controls and cabin with clear view, low noise and vibration.

**2 Smooth**

Efficient performance with fast acceleration and steady movements.

**3 Powerful**

Extraordinary lifting performance, lifting speed exceeds or is equal with diesel variants.

**4 Advanced**

Sensors monitor and optimize performance.

**5 Li-ion battery**

45 min fast-charge, long-life recyclable and maintenance-free batteries.

**6 Quality design**

Robust, safe and easily customized.

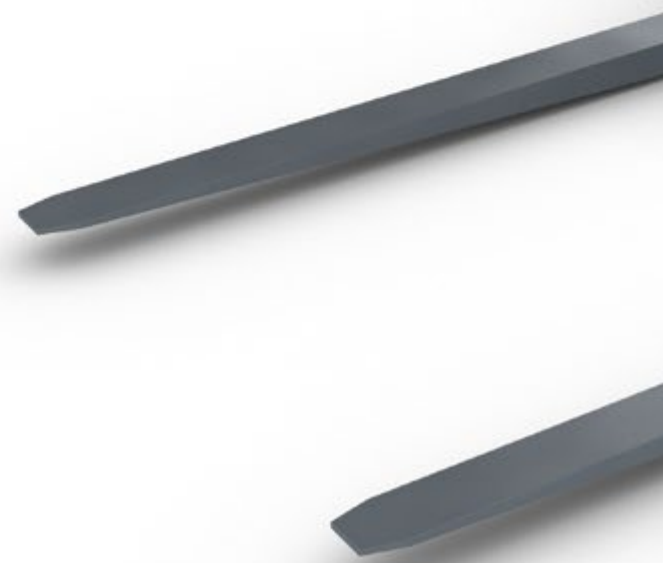
**7 Eco-efficient**

No fuel or emissions, lower energy costs, braking energy recovered.

**8 Easy maintenance**

Modular design allows easy access to fewer moving components than a diesel truck.

**Electric truck technology** is evolving so fast that by the time you read this book, there will probably be new products and upgrades that were not yet available at publication. Ask your Konecranes dealer for more details.





### Battery as a Service (BaaS)

Buy an E-VER without a battery and pay a monthly rental fee to get the best battery setup for your changing needs. BaaS solves the problem of battery degradation and battery upgrades – just swap out the battery when your rental agreement ends to revitalize your electric forklift.

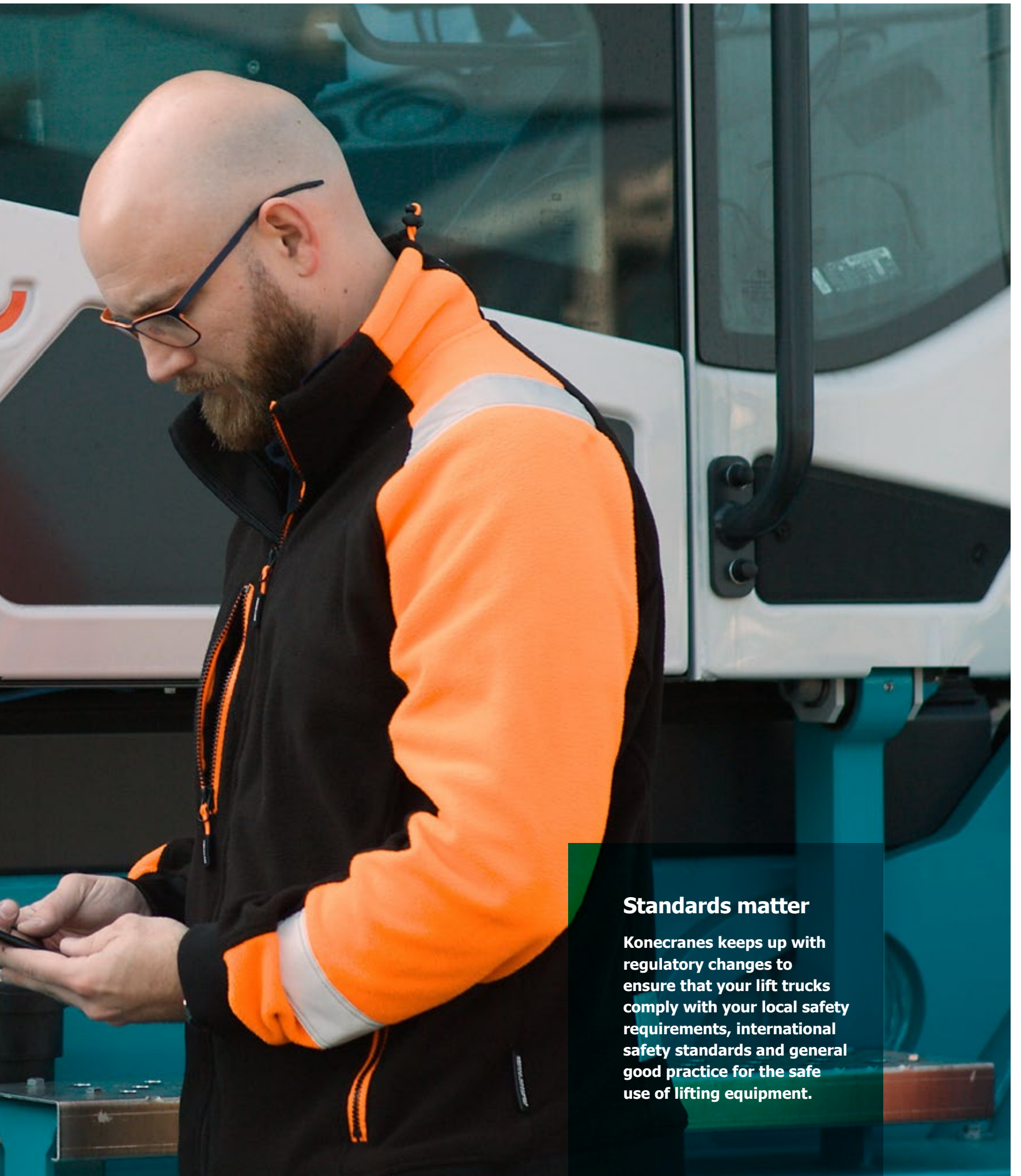
# Safety never ends

Material handling is dangerous work, so safety is the number one priority every single day. Because no two sites are exactly the same, we offer a wide variety of safety options to help you to maximize the safety of the people working in your world.

Start with prevention. Your technicians and drivers must be properly trained on Konecranes lift trucks. Then built-in safety features combined with preventive maintenance, CheckApp mobile inspections and taking advantage of Lifetime Advantage upgrades provide the safest lift trucks you can imagine.

Konecranes uses secure Internet to ensure the safety of your usage data as it travels from the trucks to yourKONECRANES.com, the customer portal where you can analyze and plan your operations in detail.





### **Standards matter**

**Konecranes keeps up with regulatory changes to ensure that your lift trucks comply with your local safety requirements, international safety standards and general good practice for the safe use of lifting equipment.**

# Top tips for improving safety

**Every Konecranes lift truck includes plenty of built-in safety features. In addition to good training and regular maintenance, you can enhance safety even further with TRUCONNECT Premium and Lifetime Advantage upgrades and retrofits.**

**Here are just a few of the ways you can improve the safety of your lift trucks. Your Konecranes distributor can help you to choose the best safety options for your world.**

## **Tire pressure monitoring**

Underinflated tires reduce stability for high loads and cornering and risk of tire explosion. Proper inflation stabilizes your truck for maximum rated load.

## **Container checking safety system**

Special supports lock the spreader in place for container inspection and maintenance while the container is being held by an empty container handler.

## **Cameras, sensors, lights and warnings**

LED light bars, warning lights, reverse cameras and laser sensors all improve visibility and audible warnings (such as reverse alarms) help in low visibility conditions.

## **Electronic scales**

Konecranes lift trucks use a static weighing system to weigh their loads. All operators can see the weight, and an alert warns them of overload.

## **Automatic fire suppression system**

High pressure water mist is released to cool and smother the fire, while a foam additive prevents the fire from reigniting. This retrofit requires no electricity to operate.

## **Ignition alcoholock**

If the alcohol content of the driver's breath is above acceptable limits, the lift truck will not start. This ensures compliance with safety standards.

## **Cabin protection**

A windshield grid or cabin safety cage protects the cabin from falling objects by creating a buffer zone between the object and the external surface of the cabin.

## **CheckApp**

This mobile truck inspection tool guides drivers through truck inspections. Quicker and easier inspections mean safer trucks, and immediate results help you to plan ahead.

## **Work Zone**

Use geofencing to remotely control the driving speed, height restrictions and working area of your lift trucks. This is particularly useful in busy, high-traffic environments.

## **TRUCONNECT®**

This telematics solution collects data for real-time diagnostics and technical support. Standard on all new Konecranes lift trucks, you can watch for alarms, alerts and shocks to determine your servicing, maintenance and driver training needs.

## **yourKONECRANES**

Our customer portal gives easy, secure access to all of the data on your fleet, including everything collected through TRUCONNECT®. Analyze the performance of your equipment with up-to-date information and make the decisions that ensure safety is never compromised.



Electronic scales weigh loads and alerts inform the driver in case of overload.



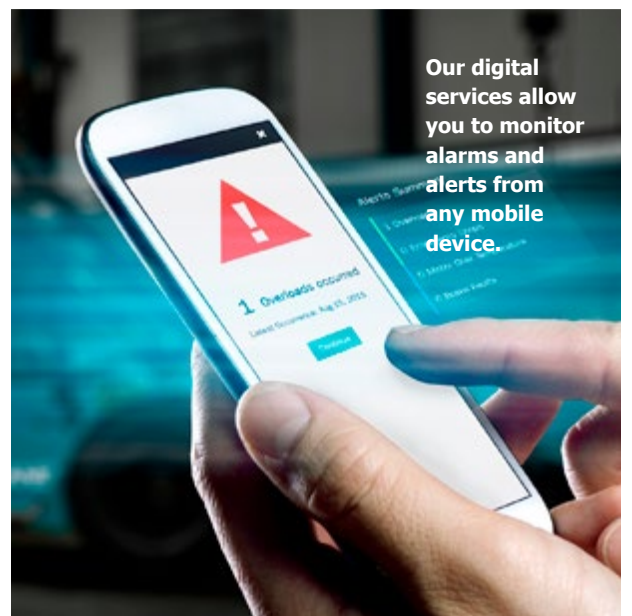
Blue Point Awareness uses a bright blue light to warn nearby personnel that a lift truck is approaching.



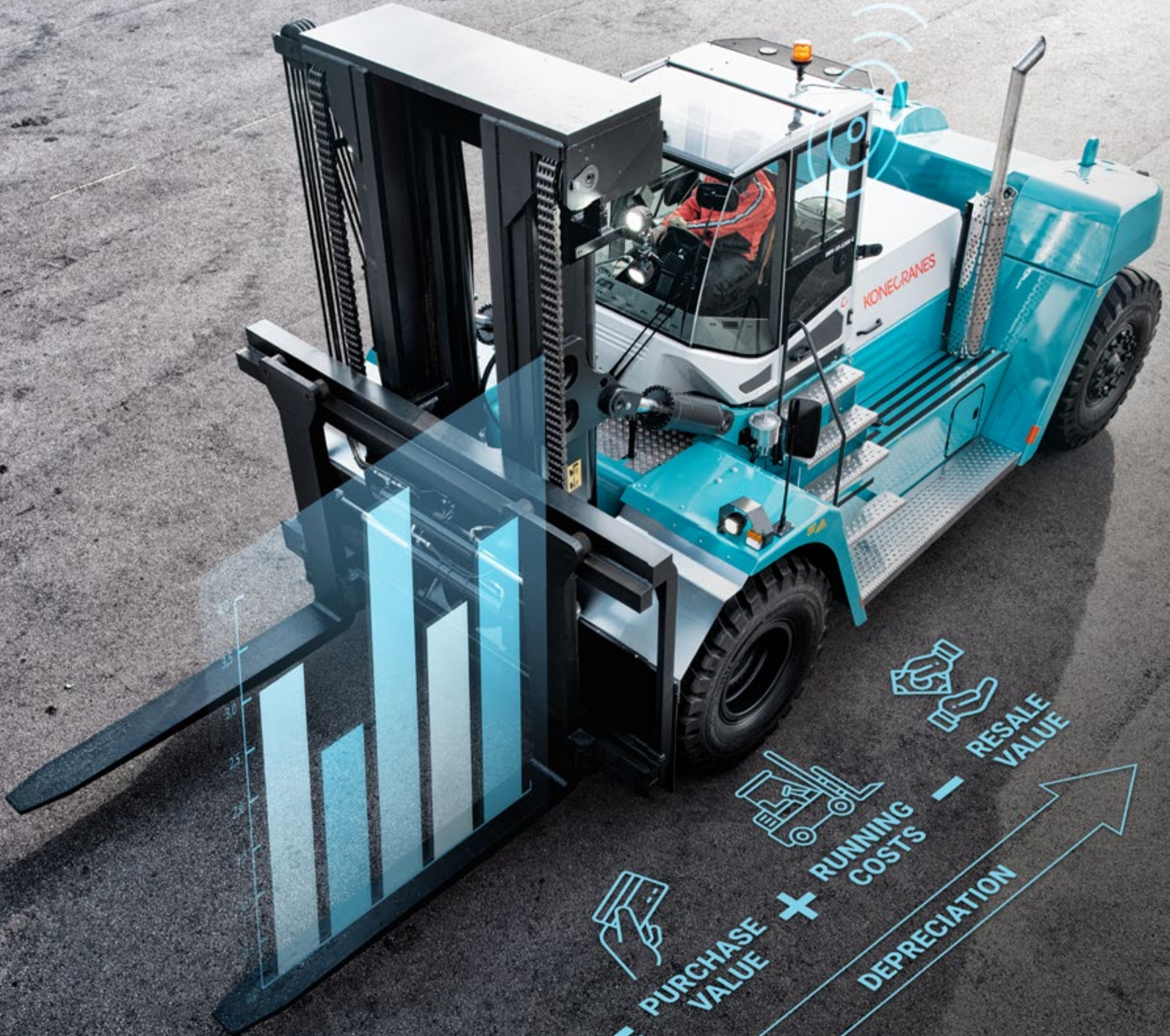
The compact reverse camera (just above the C) is discreet but provides a more complete view for your drivers.



Front and roof windshield grids protect the driver from falling objects.



Our digital services allow you to monitor alarms and alerts from any mobile device.



**TCO =**

**PURCHASE VALUE** +

**RUNNING COSTS** -

**RESALE VALUE**

**DEPRECIATION**

# How to reduce your total cost of ownership

The acquisition cost of your lift trucks is only a small part of the total cost of ownership (TCO). When making your purchase decision, you also need to take into account your running costs, including fuel, tires and rims, maintenance, replacement parts, repairs and labor. The TCO is the purchase value plus your running costs minus resale value when it comes time to upgrade.

Regardless of your costs, the most expensive machine is the one not running. Here are some proven ways to reduce the running costs in your TCO. Some might be obvious, while others may be surprising. Consider them carefully when deciding on your next lift truck investment.

## Service on a schedule

Prevention is better than cure: **preventive maintenance and regular inspections** help you to plan ahead, keeping an eye on each truck to ensure your entire fleet stays well-oiled and efficient all year round. And when you service your Konecranes lift trucks, always use **original Konecranes spare parts**. They might cost a little more than generic parts, but they are more than worth it in terms of reliability and performance, and will save you money in the long run.

## Use truck features

Konecranes lift trucks are full of great standard and optional features that improve performance and safety while saving fuel and reducing maintenance downtime. For example, **load-sensing hydraulics** intelligently allocate power, **tire pressure sensors** maximize stability and performance, and the **Hydraulic**

**Long Life (HLL) filter** dramatically increases the oil change interval. Other features like **EcoDrive** and the **idling timer** help optimize fuel consumption and speed limits, while **automated central greasing** minimizes mechanical wear and reduces maintenance. The **pre-heaters and heat protection** help keep the engine at its optimal operating temperature in extreme cold or hot environments.

## Enter the digital age

Every Konecranes lift truck has **TRUCONNECT® telematics** installed to collect data for lift truck management, offering up-to-date usage and performance reports to help you improve the efficiency, productivity and safety of your operation. Access your data through our online customer portal **yourKONECRANES**, with customized settings to show you all you need to know for your world.

## Battery as a Service (BaaS)

If you're thinking about getting an electric lift truck, you can buy one without a battery and rent the battery instead. The battery is a significant part of the capital investment, so renting it greatly reduces your initial costs.

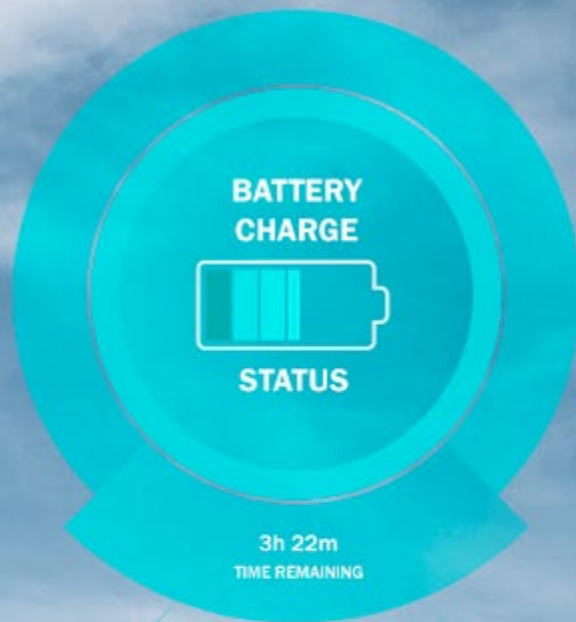
# Smart Connected Lift Trucks

We connect data, machines and people to provide you with the insights that allow you to optimize your lift truck fleet.

Konecranes TRUCONNECT telematics and the yourKONECRANES customer portal offer near real-time monitoring and diagnostics. Online trucks allow you to follow truck movements, check oil, monitor tire pressure, improve energy consumption and much more that will boost the safety and efficiency of your operation.

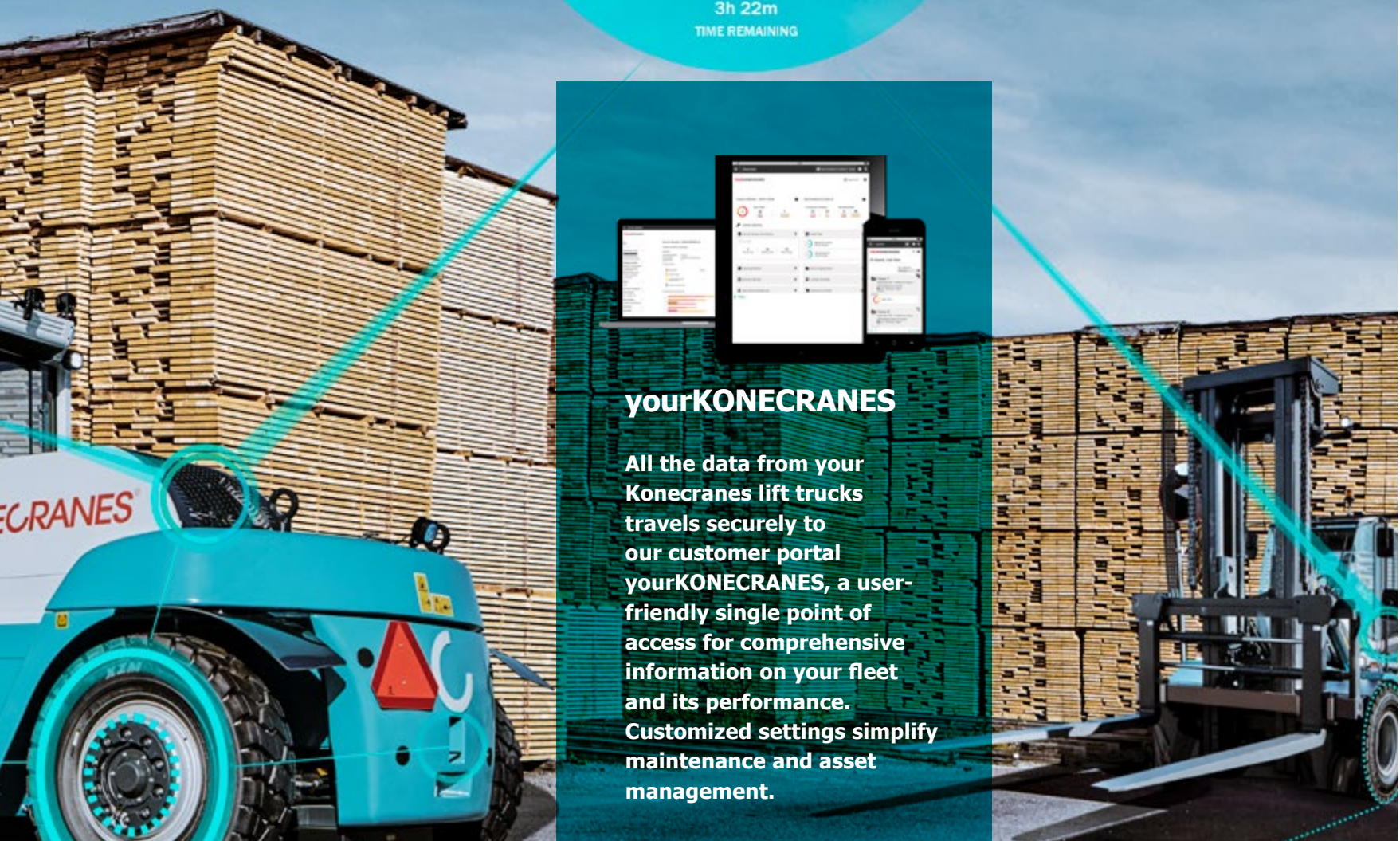
In 2012, we sold our first Smart Connected Lift Truck. Since 2022, TRUCONNECT® has been standard on all new Konecranes lift trucks.





### **yourKONECRANES**

All the data from your Konecranes lift trucks travels securely to our customer portal **yourKONECRANES**, a user-friendly single point of access for comprehensive information on your fleet and its performance. Customized settings simplify maintenance and asset management.



# Always connected

To assist you in important operational decisions, we've made our lift trucks smart and connected. Keep up to date with your equipment using analytics about the current condition by sending analytical data to the online customer portal yourKONECRANES. There you can adjust equipment settings, plan maintenance, and optimize your operations for your world.

### Operational Efficiency

720 h

Asset Utilization

3% Idling	28% Empty	69% Laden
--------------	--------------	--------------

Fuel Consumption

5.5 l/lift	7.5 l/h	3500 Total l
---------------	------------	-----------------

### Asset Maintenance Planning

September 2023

Mon	Tue	Wed	Thu	Fri	Sat	Sun
						1
2	3	4	5	6	7	8
9	10	11	12	13	14	15
16	17	18	19	20	21	22
23	24	25	26	27	28	29
30						

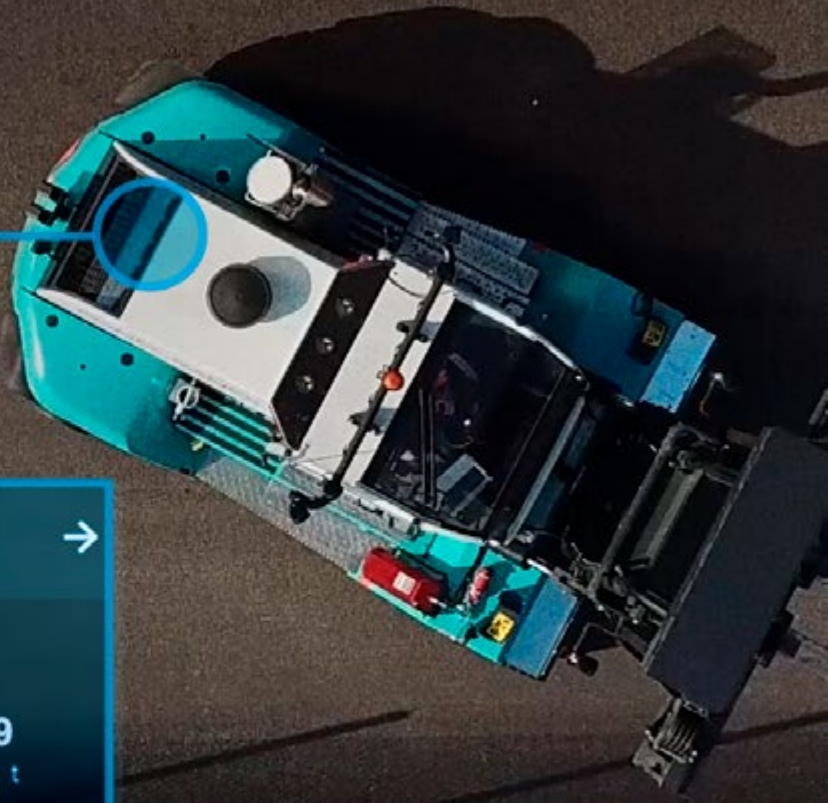
0 Overdue | 1 Upcoming Maintenance Activities

### Environmental Impact

CO<sub>2</sub>

CO<sub>2</sub> Emissions

0.8 kg/lift	1.2 kg/h	89 Total t
----------------	-------------	---------------





## Lift trucks that talk

### TRUCONNECT®

Konecranes TRUCONNECT® is a telematics solution that collects data for real-time diagnostics and technical support. Standard on all new lift trucks, the basic installation allows you to monitor operations, with on-demand reporting to help you to minimize costs and maximize uptime. Premium and Premium Plus upgrades add more features for special applications.

### Work Zone

Geofencing uses GPS to remotely control the driving speed, height restrictions and working areas of your lift trucks. This is particularly useful in busy, high-traffic environments where the safety of your personnel and lift trucks is more at risk. Konecranes Work Zone is a geofencing tool included as standard with TRUCONNECT®.

### CheckApp

Improve safety with CheckApp, a mobile tool that guides drivers and service engineers through service inspections. The digital format allows pictures, voice, and videos to be added to a written checklist for a more comprehensive report. Instant results help you to plan operations and maintenance. From a range of languages, pick an inspection template, then customize it for your application.

## A window to your trucks

### yourKONECRANES

Your lift truck data is transmitted securely to our customer portal yourKONECRANES. Accessible in several languages on any device, it's a user-friendly single point of access to all information on your fleet, including performance, maintenance and manuals. This comprehensive view helps you to optimize your uptime, costs and overall operations.

### eLearning

The Konecranes Lift Trucks Academy (KLA) is an user-friendly eLearning platform for the customers and partners of Konecranes Lift Trucks. In several languages, you can access online training courses on the use and maintenance of every Konecranes lift truck model. Regularly updated, and available online 24/7, anywhere with an Internet connection, KLA provides the opportunity to tailor training according to your needs.

### Smarter Ecolifting

When you can see what your lift trucks are doing, you can minimize your fuel consumption and carbon emissions, improve battery performance, and even reduce noise. Choose Eco-Drive in less busy periods to optimize their operation and save even more fuel. See the effect of your trucks on the environment and adjust their settings for your world.



# Get your Lifetime Advantage

After you purchase a Konecranes lift truck, we offer you far more than just after-sales service. You can get resources for truck maintenance, fleet management, investment growth and safety enhancements, all backed up by a dependable support network.

Because this is available to you for the entire life cycle of your Konecranes lift trucks, we call it the Konecranes Lifetime Advantage. It's a better experience.

## PARTS PROMOTIONS

Lifetime Advantage parts promotions encourage you to stock up on genuine Konecranes parts to ensure the maximum reliability and performance of your Konecranes lift trucks. Designed for Konecranes equipment, they can be guaranteed to meet or exceed all required standards.

# The Lifetime Advantage of choosing Konecranes

## It's a better experience



### A smarter maintenance experience

Our Smart Connected Lift Truck resources give you a clear view of your Konecranes machine. See its current status along with its overall performance. Then access simple-to-use tools such as CheckApp and Maintenance Planner to put your insights into action.

Konecranes spare parts are engineered to perform under the most challenging operating environments, and our comprehensive selection of training resources supports lifelong learning.

**A clear view leads to smart maintenance and a lifetime of reliable performance.**



### A cleverer investment experience

Your lift truck fleet is a significant investment. We help you to preserve its value through our upgrade packages, retrofits and sustainability improvements. You get a feeling of "money well spent" with a reliable fleet that gives you a solid return on your investment.

When you partner with Konecranes, you have the security of working with a strong and dependable market leader in the lifting equipment business.

**The longer you stay with us, the better your investment will look.**



### A wiser management experience

Konecranes digital tools help you to better assess the efficiency, cost effectiveness and productivity of your lift truck fleet. Understand how your machines are being used, the driving patterns of your team, and the overall sustainability of your operation.

When you have a detailed understanding of your fleet, you can be more strategic when you allocate capital and plan your operations, and you can better ensure the safety of your team.

**Accurate, up-to-date knowledge means smarter decisions and a lifetime of fleet efficiency.**



### A safer driving experience

Safety is embedded in everything we do. It's the first thing on our minds when designing our lift trucks, when thinking about their maintenance, and when considering your drivers' day-to-day machine handling experience. A safer lift truck is a better lift truck.

As technology evolves, we continue to improve the safety of drivers and nearby personnel with safety upgrades, retrofit solutions and specialized training.

**Lifetime Advantage prioritizes safety in and around Konecranes lift trucks.**





**A dependable team with experience**

With the deep knowledge that comes from many decades of designing, manufacturing and selling lift trucks, we offer you outstanding technology and expertise through carefully chosen distributors who are fully committed to the success of our customers.

The power of our support begins with the strength of our people. You can be confident in Konecranes, a global leader, as we and our local distributors work with you.

**For the entire life cycle of your equipment, we will always be at your side.**

LIFETIME ADVANTAGE  
**CUSTOMER CASE**

---

# Safer drivers at a leading Greek port

**ThPA S.A. is the operator of the Port of Thessaloniki, a gateway port to the Balkans and southeast Europe in an advantageous geographical location close to major trans-European road and rail networks. It is the largest Greek port for conventional cargo and one of the busiest ports in the country, including around half a million TEU in container throughput per year.**

## The Challenge

The heavy machinery and traffic at seaports and docks make them hazardous places to work, so safety is always the highest priority. Even with reliable lifting equipment and good safety protocols, unpredictable events in such a busy work environment can still lead to significant risks for workers.

## The Solution

Konecranes provided an Over Head Guard safety cage for protection from falling objects for their two Konecranes SMV 5/6 ECC90 empty container handlers. Compliant with applicable standards, including ISO 6055, the Over Head Guard is a steel frame mounted around the front and sides of the lift truck cabin that provides additional shielding and reinforcement for the cabin structure.

## The Benefits

Konecranes OPTIMA lift truck cabins are designed for comfort, visibility and safety, and an upgrade can improve safety even more. The Over Head Guard creates a buffer zone between any falling object and the external surface of the cabin for extra protection from potential damage or injury. Its open design ensures no obstruction to visibility.

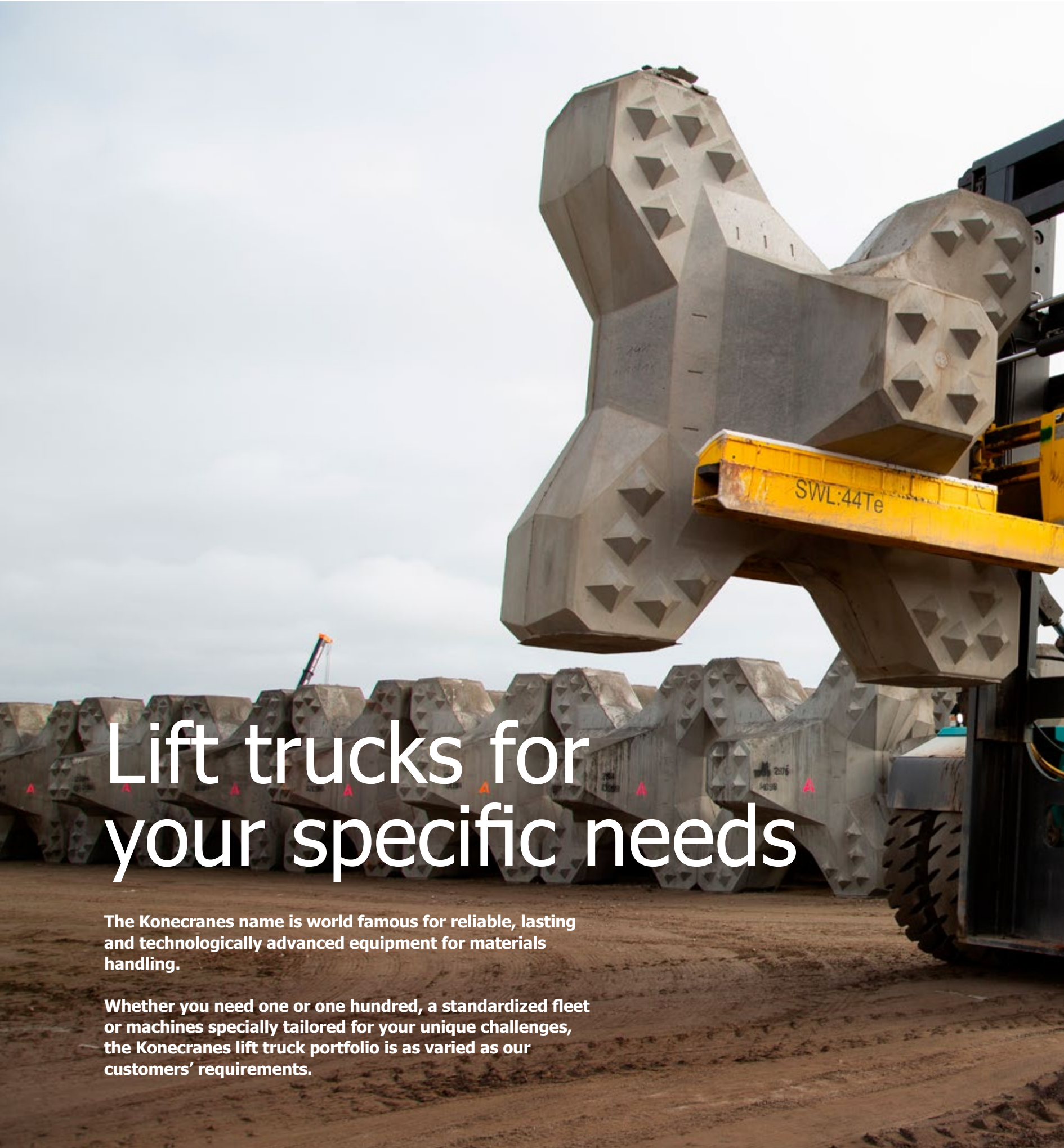


The Over Head Guard has an open design to maintain sightlines around the driver.



**“Just like our lift trucks, Lifetime Advantage upgrades are built to meet the challenges of your world. With the Over Head Guard, the Port of Thessaloniki has shown dedication to minimizing health and safety risks in the workplace.”**

EMMANOUIL ATHANASAKIS  
Services Sales Manager EMEA, Lift Trucks, Konecranes



# Lift trucks for your specific needs

The Konecranes name is world famous for reliable, lasting and technologically advanced equipment for materials handling.

Whether you need one or one hundred, a standardized fleet or machines specially tailored for your unique challenges, the Konecranes lift truck portfolio is as varied as our customers' requirements.



## CUSTOMIZE IT

### Marine engineering

Due to their huge size and unusual shape, the concrete accropodes in a breakwater have a long load center, so they need a high-capacity forklift for counterbalance.

[MORE ATTACHMENTS ON PAGE 111](#)

# Branding your trucks

**Your lift trucks are special, and not just because they come from Konecranes. They play a key role in your operations on your shop floor, in your storage yard, or on your quay. So some customers like to personalize their trucks with company colors, logos or other identifying marks, to show how important their Konecranes lift trucks are, while also making them truly unique.**

Tweaking the appearance of your lift trucks helps to identify them easily. It creates a sense of pride in your drivers as they use them and builds more brand recognition for your customers as you handle materials in your world.







# THE INDUSTRIES



YOUR WORLD

THE INDUSTRIES

OUR STORY

THE TRUCKS

# Port and terminal

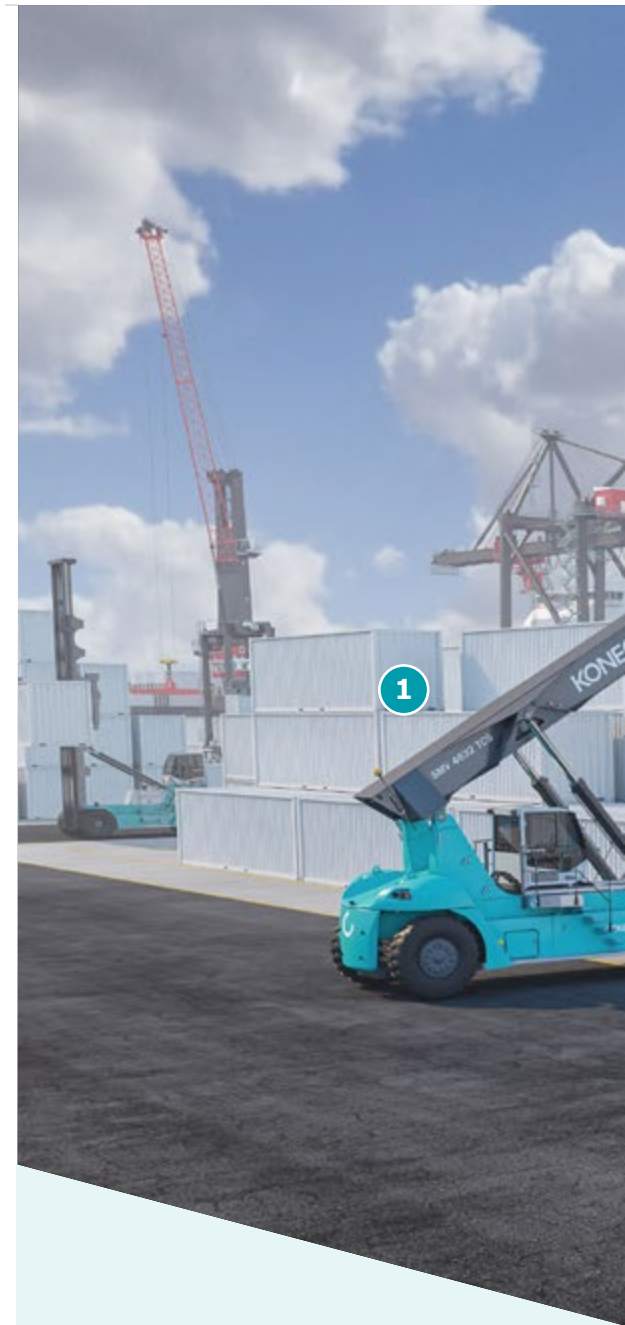
**Handling containers and freight at transport hubs is a specialized application of heavy-duty lift trucks in which Konecranes has particular expertise. Our offering comprises forklifts, reach stackers, empty and laden container handlers, and attachments for almost any kind of cargo.**

Konecranes lift trucks operate at many important container terminals around the world. We often hear how customers' productivity improves from the moment they start to use Konecranes equipment. And with high performance, easy maintenance and long service life, they keep coming back to us to upgrade or replace their older trucks.

The key to our success is to provide every customer with exactly the lift truck they need. You can choose from the widest range of premium lift trucks for container handling on the market. When you find the right model,

optimized for your specific requirements, you can be sure that your Konecranes lift truck is ready to move containers and cargo exactly the way you want it.

At seaports or inland terminals – anywhere containers are stored or in transit – we offer an excellent selection that includes heavy-duty forklifts and special attachments. If you have an unusual specialization, our extensive experience will help us engineer a unique solution, just for you.



## CUSTOMIZE IT

### Standard spreader

A good-quality, reliable spreader ensures your reach stacker can operate continuously through long shifts with speed, accuracy and safety.



[MORE ATTACHMENTS ON PAGE 108](#)



## THE TRUCKS

**1 Reach stackers for container handling, 10-46 tons**

Choose your capacity/performance ratio and add your ideal features.

**Empty container handlers, 8-11 tons**

Fast operation, mid-mounted and rear-mounted cabins and excellent stability.

**2 Laden container handlers, 26-52 tons**

Fast operation, stable and compact, best-in-class ratio of lifting capacity to truck size.

**Forklifts for special handling, 10-65 tons**

Special attachments for broken containers, flat racks, and loading/unloading trucks.



**REACH STACKER**



**EMPTY CONTAINER HANDLER**



**LADEN CONTAINER HANDLER**



**FORKLIFT**



**MOBILE HARBOUR CRANE (MHC)**



**SHIP-TO-SHORE CRANE (STS)**



**GOLIATH GANTRY CRANE (GGC)**



**AUTOMATED HIGH-BAY CONTAINER STORAGE (AHBCS)**



**AUTOMATED GUIDED VEHICLE (AGV)**



**STRADDLE CARRIER (SC)**



**RUBBER TIRED GANTRY CRANE (RTG)\***



**RAIL MOUNTED GANTRY CRANE (RMG)\***

# How to choose container handling equipment

**If you operate a container port or terminal, you know that the most essential part of your operation is your container handling equipment, usually a fleet of cranes and lift trucks that must work together seamlessly to handle all the containerized cargo that comes through your port.**

Whether you've got a greenfield site just starting out or you run a brownfield location and want to build on your existing facilities, developing your fleet is a big, complex investment. How do you choose the right equipment?

You can estimate what you need by the TEU that you expect to handle every year. Take a look at

the diagram at the bottom of the page. If you're handling about half a million TEU, then go for empty and laden container handlers because they offer flexibility and speed. When the volume doubles and you reach about one million TEU, empty and laden container reach stackers offer the lowest investment cost while raising your stacking density.

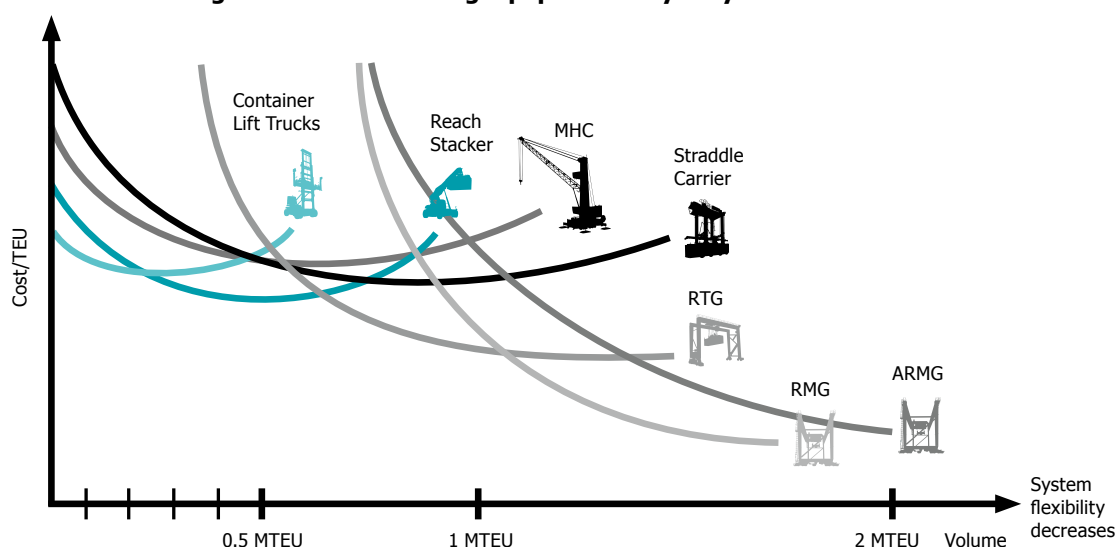
Larger terminals should keep their lift trucks for continued operational support. However, as the volume increases to about 1.5 million TEU, you should consider adding straddle carriers for high performance, safety and life cycle value. If you expect your terminal to grow still further, rubber-tired gantry (RTG) cranes would be a wise investment with excellent operational flexibility, the ability to change stacks and high productivity. Intermodal container terminals handling around 2 million TEU would greatly benefit from the high efficiency of rail-mounted gantry (RMG) cranes. Larger modern terminals really need automation, and an automated RMG (ARMG) would be your ideal choice.

These are just a sample of what Konecranes has to offer your port. Containers, bulk, or whatever your material handling needs, Konecranes can improve your productivity in your world.

Konecranes is the only supplier that can offer you an extensive range of cranes and fully compatible lift trucks together with a full maintenance program, a comprehensive set of spare parts supported with the latest onboard software, remote monitoring and diagnostics. It's all there together, working seamlessly to keep your lift trucks extremely safe and extremely productive.

## BUYER'S GUIDE

**What's the right container handling equipment for your yard?**



- Cost/TEU is changed by additional investments
- Achievable cost/TEU is dependent upon technology
- The technology selected may restrict future evolution, e.g. to automation

PORT AND TERMINAL  
**CUSTOMER CASE**

---

# Quality endures in the tropics

**LCB1 Group is a market leader in export and import container handling in Thailand. Under parent company APM, it consists of LCB Container Terminal 1 LTD and LCMT Company Limited, and operates two berths at Laem Chabang Port, a key transit hub for international trade located about 150 km south of the Thai capital Bangkok.**

## The Challenge

Operating 24/7 every day of the year, LCB1 handles over 1.7 million TEU annually. Such a busy container operation needs reliable equipment robust enough for near continuous use around the clock. To provide the best service possible, the LCB1 berths must be able to adapt to the ever-changing needs of their customers.

## The Solution

Over several years, LCB1 has purchased a total of twelve lift trucks from Konecranes. They have eight 9-ton empty container handlers: seven SMV 6/7 ECB 90s and one next-generation SMV 6/7 ECC 90. They also have four reach stackers: three 41-ton SMV 4127 TB5s and one 46-ton SMV 4632 TC5. Each lift truck offers fast operation, load-sensing hydraulics, and excellent stability.

## The Benefits

The Konecranes lift trucks have helped to optimize site operations by speeding up the flow of containers through the work area. Ergonomic cabins give drivers easy-to-use controls and a comfortable working environment in the midst of tropical heat. Low-emission engines with extra-high torque at low revs reduce noise, fuel consumption and emissions. Different truck capacities allow high operational flexibility.

The LCB1 Konecranes lift truck fleet comprises eight 9-ton empty container handlers and four reach stackers: three 41-ton and one 46-ton.



**“The performance of the Konecranes lift trucks is outstanding, and a comprehensive service contract has been the perfect way to maintain them.”**

Ms SASIYADA SUPIDANOPNATEE  
Assistant Procurement Manager, LCB1.

# Intermodal and barge handling

**Intermodal freight travels in standardized containers that move between different modes of transport, such as road, rail and water, without any unpacking. Konecranes Lift Trucks offers a wide range of specialized reach stackers for intermodal and barge container handling. Their remarkable flexibility and performance have made them popular with leading intermodal operators around the world.**

Lifting with exceptional power and stability, our intermodal reach stackers can handle containers up to the third row across rail tracks, road lanes or the hull of a barge. They are heavy duty machines with a long wheelbase, large lifting capacities and excellent maneuverability. Surprisingly smooth and easy to operate, your drivers and your business will enjoy outstanding productivity.

Konecranes intermodal reach stackers are highly flexible lifting tools. You can choose from an extensive list of features, such as an eco-efficient engine, specialized spreaders, and an adjustable cabin, to tailor your truck and enhance its performance in your world. Additional features include remote control to allow operation outside of the cabin and the ability to increase capacity when managing container stacks in the storage yard. Electronic weight scales prevent overload.

Barge handling is a special kind of intermodal because containers on floating barges can be below ground level. This requires an unusual downward angle for the boom, resulting in a negative lifting height. Support jacks are available for extra stability in case of a fourth row. Improve your drivers' visibility with front twist lock cameras, help them lift straight with synchronized vertical lifting and use mechanical reverse speed limits for extra safety.

Konecranes reach stackers for intermodal provide excellent ground-level support for the Konecranes Rail Mounted Gantry (RMG) or Rubber-Tired Gantry (RTG) cranes at your intermodal terminal.



## CUSTOMIZE IT

### Telescopic intermodal spreader

A combi aka piggyback spreader for laden ISO containers, swap bodies and trailer handling has foldable legs for flexible lifting between modes of transit up to 45 tons.



MORE ATTACHMENTS ON PAGE 109



## THE TRUCKS

### Reach stackers for container handling, 10-46 tons

Identify your intermodal capabilities, choose your truck and add your ideal features.

## INTERMODAL AND BARGE CUSTOMER CASE

---

# Barge handling in northern France

**Ports de Lille is the third-largest inland waterway port in France, behind only Paris and Strasbourg. Processing a throughput of some 8 million tons per year, it needs a high-performance fleet of container handling equipment across a network of local water transport facilities to ensure a continuous, efficient flow of freight traffic.**

### The Challenge

A new traffic line was planned to link Port de Santes to Port de Béthune Beuvry. To do this, the port needed four barge handlers, special reach stackers capable of accessing the floating barges used on inland waterways from the quayside. Two of the barge handlers would be located at the Santes terminal to help load departing ships, and two more would be at Béthune to unload vessels upon arrival.

### The Solution

Ports de Lille purchased 4 Konecranes SMV 4545 TCX4 BH barge handlers, reach stackers adapted for loading and unloading a barge, which is usually below the level of the quay. Each of the barge handlers has a first- and second-row capacity of 45 tons. With a wheelbase of 9,000 mm, they provide excellent stability and reach, and can lift up to 28 tons on the fourth row across a barge. In terminal mode, this amount goes up to 34 tons.

### The Benefits

Two identical reach stackers at each end of the water traffic line help Ports de Lille keep their operations smooth and efficient. High stability under challenging conditions with the flexibility to revert to standard terminal operations offers long-term flexibility throughout the Lille port facilities. TRUCONNECT® Remote Monitoring provides both maintenance support and safety features like height warning alarms and speed limits.



Barge handlers are reach stackers specially adapted for loading and unloading the floating barges used on inland waterways.



**“This is a very busy port. Our equipment must do much more than just lift cargo. Konecranes offered us exactly what we wanted.”**

ALAIN LEFEBVRE  
Directeur General de Port de Lille

# Metals production

**Metal is hot, dusty and dangerous to produce, so all metals handling equipment must be specially designed for a challenging work environment. Whether you need to move raw materials, hot metal, or shape it in a rolling mill, Konecranes Lift Trucks can provide you with a wide range of heavy-duty forklifts, reach stackers and related attachments to handle your industrial metal products.**

Our lift trucks offer you a fast and reliable means of shifting steel, aluminum and other metals through your factory processes and out to your customers. With a tight turning radius and excellent maneuverability, they are particularly good in areas where space is limited around a smelter, steel mill or storage area. You can add overload protection for additional stability, heat protection for extra safety and protection grids to shield the cabin from unexpected hazards.

Do you operate a smelter, a foundry or a mill? It doesn't matter what kind of metals production facility you have, or which metals are in your inventory. Konecranes provides a huge selection of lift truck models for metals handling with various capacities, performance capabilities and an extensive choice of attachments sure to suit your specific requirements.



## CUSTOMIZE IT

### Single coil ram with fork shaft

Move steel and aluminum coils around your factory safely and easily with a single or double coil ram on your forklift's shaft or a rotator carriage.



MORE ATTACHMENTS ON PAGE 111



## THE TRUCKS

### 1 Reach stackers 10–80 tons

The right choice when weight could exceed what a forklift can handle.

### 2 Forklifts 10–65 tons

A quick-change fork shaft allows easy adaptation to new applications.



METALS PRODUCTION  
**CUSTOMER CASE**

---

# Longer and stronger

**British Steel is a leading international steel manufacturer, producing around three million tons of steel products every year. At their facility in Teesside, North Yorkshire, they operate a rolling mill alongside a processing and global distribution center for long steel products in construction applications.**

## The Challenge

British Steel Teesside needed to lease two new lift trucks that could move large steel sections up to 33 tons to and from internal pallet trailers wider than the standard external heavy haulage flatbed trailers. Because long steel products can vary widely in size and weight, the trucks had to be adjustable for different loads and easily maneuverable in all kinds of spaces across the site.

## The Solution

Konecranes provided two SMV 33-1200 C forklifts, sturdy lifting machines with a capacity of 33 tons. Built to a British Steel specification for long steel handling, they have reinforced 2.8-meter forks (80 centimeters longer than standard), a reinforced heavy-duty mast and a carriage with extra supporting rollers and bearings. Importing was through local distributor Aporlis UK Ltd, and leasing was arranged by Middlesborough dealer Advanced Material Handling Ltd.

## The Benefits

Special customizations for British Steel make these forklifts truly unique and ensure efficient daily operation in the challenging conditions of a steel plant. The long-term lease offers high operational flexibility with minimum downtime as it includes weekly inspections, all servicing, maintenance and parts, and TRUCONNECT® Remote Monitoring for up-to-date diagnostics and optimized usage.



Special customization has strengthened the forklifts for heavy duty steel handling.



**“We’ve been using Konecranes forklifts for nearly 10 years. They are fantastic machines that have proved a great asset to our business.”**

LEE ROBSON  
Operations Manager, Prairies,  
Teesside, British Steel.

# General manufacturing and bulk

**Do you run a small workshop with just a few employees, or do you operate an enormous factory that produces thousands of units of output per day? The size of your business and the nature of your industry don't matter. Konecranes lift trucks can help you manage your processes with strength, reliability and precision.**

From raw materials to miscellaneous cargo or any kind of heavy-duty handling, a lift truck with the right attachment is a valuable tool at every stage of the manufacturing process. And when the final product is ready, lift trucks can carry it to your distribution points. If you've got an unusual load, and you can't find the right attachment, we can customize one for your specific application. Optimized for your world, a Konecranes lift truck will provide you with a long, strong and lean service life.

Our tough and durable forklift trucks are also ideal for handling concrete, brick and rock in quarries, factories, shipping sites and ports.

Tailoring such as modified masts, wider fork carriages, multiple forks and special reinforcement help the trucks lift heavy and unusual loads like bricks in packages or 40-ton marble blocks. The trucks' modular design allows almost unlimited customization, giving our equipment the flexibility to handle even the most challenging materials.

Konecranes lift trucks provide the perfect support for Konecranes overhead cranes and workstation lifting systems at your manufacturing or bulk handling facility, a truly integrated solution for your world.



## THE TRUCKS

**1 Reach stackers for container and metals handling, 10-46 tons**

Choose your capacity/performance ratio and add your ideal features.

**2 Forklifts for special handling, 10-65 tons**

Identify your production requirements and add your ideal features



2

## CUSTOMIZE IT

### Tool carrier system

Change your industrial lifting tools quickly and securely on a strong single-beam hydraulic spreader with floating twistlocks and mechanical safety locking.



MORE ATTACHMENTS ON PAGE 113



1

GENERAL MANUFACTURING & BULK  
**CUSTOMER CASE**

---

# Powerful modified forklift transports concrete and brick for German construction

**Wöhrl Ziegel & Fertigteile produces bricks and prefabricated brick parts, such as solid roofs, and prefabricated concrete parts, including element ceilings and balconies, in Berghaselbach, Bavaria. A family business with more than 170 years of experience, Wöhrl offers its customers over 100 different building products. Konecranes provided a heavy-duty forklift specially adapted for the tough conditions of a building materials factory.**

## The Challenge

The Wöhrl plant makes precast construction elements up to 9 meters long, with a stacking weight that can reach 16 tons. The components sit on double-T beams for transportation to an external warehouse before delivery to customers. Concrete and brick parts produce a lot of particle dust that can affect machinery. In addition, the unusual width and shape of the loads means that a normal forklift truck is not enough to move them, and stacking is a particularly demanding task.

## The Solution

Konecranes started with its SMV 16-1200 C forklift, an extremely robust, heavy-duty machine with a 3.75-meter wheelbase for high stability. They then added a specialized fork extension, adjustable to a width of 4 meters, and grooved tines that can be moved individually to line up with the T-beams when making a lift. The truck's hydraulics are protected by an HLL (Hydraulic Longlife) microfilter that collects particles as small as 3µm. A mast camera shows the exact direction of the fork, even at a height of 4 meters.

## The Benefits

The specially modified, heavy-duty forklift transports the Wöhrl construction materials efficiently and safely to any location on their factory site. Adjustable forks save time without changing attachments, while offering both flexibility and precision for loads of different sizes and weights, with the tine grooves providing extra stability. A high-performance filter system safeguards the hydraulics from dust and other contaminants, reducing maintenance needs and increasing operating time.

Uwe Höß of Konecranes handing over the special forklift to Dieter Hofmann, Production Manager and Thomas Wöhrl, Managing Director of Wöhrl Ziegel & Fertigteile.



**“The lift trucks we use must work with high precision under harsh operating conditions. The Konecranes heavy-duty forklift, with its specially adapted forks and high-performance filter, is ideal for use on our premises.”**

THOMAS WÖHRL  
Managing Director, Wöhrl Ziegel & Fertigteile

# Food

**Foodstuffs require careful handling to ensure that they arrive safe to eat or drink on their long journey from soil to consumer. With precision, speed and cleanliness, Konecranes lift trucks can help you to load trucks on your farm, move product at your warehouse, feed your factory processes and pack vehicles at your distribution center.**

Refrigerated containers or “reefers” are a common way to transport food and beverages in large quantities. Konecranes reach stackers are gentle enough to provide the specialized handling, loading and storage that the built-in refrigeration unit on a reefer requires, and are particularly good for intermodal shipments. When the same machine can handle different kinds of containers, you save time and money in your operations.

A Konecranes forklift fitted with a rotator can help you to transfer containerized raw materials from transport directly into your process without changing equipment. Move large amounts of rice, powders (like flour) or even fish food in one-ton bulk bags suspended from forks. A

cascade handler allows you to shift a dozen laden pallets simultaneously, while a pallet handling clamp brings the empty pallets back for reloading or storage.

With high maneuverability, low emissions and electric options, Konecranes lift trucks are ideal for both indoor and outdoor use at processing plants, transportation hubs and storage facilities. Excellent cabin visibility, a range of height and attachment options, and geofencing all improve safety and streamline your goods handling. Fast operation ensures timely delivery into your distribution network to meet delivery schedules and prevent spoilage.



## CUSTOMIZE IT

### Telescopic side lift spreader

A forklift can handle two empty ISO reefer containers, or double reefers with the refrigeration units aligned, using this innovative 11-ton side lift spreader.



[MORE ATTACHMENTS ON PAGE 108](#)



## THE TRUCKS

### **Reach stackers for container handling, 10-46 tons**

Define your product packing, your capacity requirements and your ideal features.

### **Forklifts for special handling, 10-65 tons**

Identify your special lifting needs and choose the optimal features for your world.

FOOD  
**CUSTOMER CASE**

---

# Lift trucks going bananas

**Naportec S.A. is located in Guayaquil, the second-largest city in Ecuador. Owned by Dole Fresh Foods, it's one of the biggest shipment facilities in the country, and deals mostly with the transport of local fruit to both national and international markets. The company has played a key role in developing logistics chains across Ecuador.**

## The Challenge

Tropical fruit such as bananas, mangoes and pineapples are growing in popularity around the world. The dock at Guayaquil has been expanding with new technology and infrastructure to deal with this demand. Because the dry and refrigerated products they move are consumable, the company follows the Food Safety Act (2015) from the United States, their biggest export market. Any new equipment must support this effort.

## The Solution

Over several years, Naportec has gradually replaced their old machines with Konecranes equipment. They have two SMV 4531 full reach stackers and three SMV 108 empty reach stackers. They also have four 45-ton Konecranes Linde reach stackers and two Konecranes RTGs. TRUCONNECT® helps keep track of the condition of their lift trucks on a real-time basis, using operations data for preventive maintenance.

## The Benefits

The Konecranes machines have helped to improve efficiency, increase throughput and maximize the safety of both personnel and food products at the Naportec facility. Also, despite substantial business growth, the fuel efficiency of the Konecranes lift trucks has helped to achieve a significant reduction in fuel consumption, officially recognized in eco-efficient certification from the Ecuadorian government.



Konecranes lift trucks have helped to reduce fuel consumption and local environmental impact.



**“Konecranes equipment has made all the difference, helping us to optimize our processes, prevent damage and greatly reduce downtime.”**

RONALD CRUZ  
Dole Maintenance Manager.

## Paper and wood

**Konecranes has been working closely with the paper and wood industries since the 1920s. Today, we offer the most complete and technologically advanced paper and wood handling equipment in the world. It comprises a full range of lift trucks, fork and carriage combinations, fork-shaft systems, bale clamps, roll clamps and other attachments. Konecranes overhead cranes work in concert with our lift trucks for a fully integrated solution.**

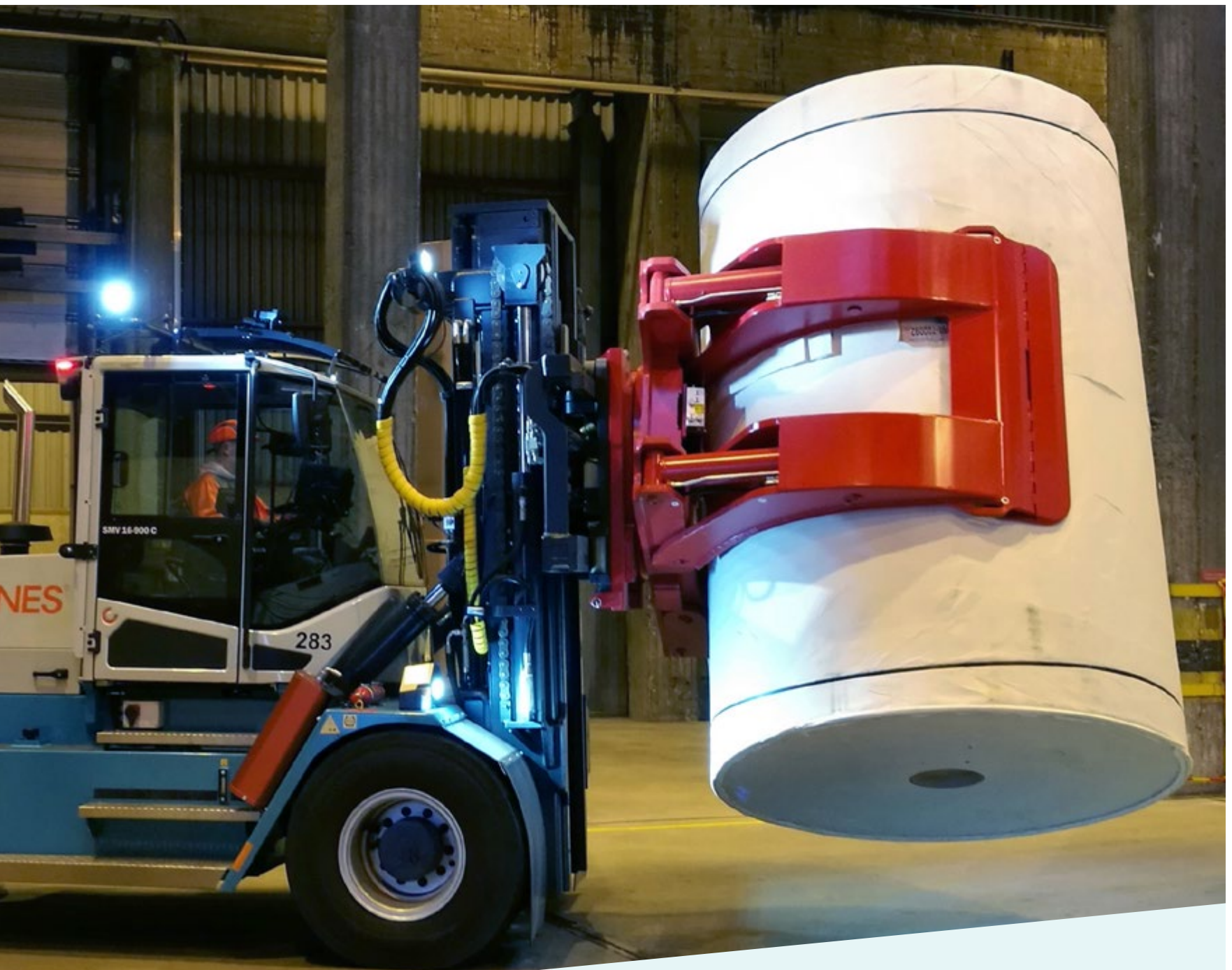
At your sawmill, optimize your Konecranes forklift for drier feeding, handling wood packs in your warehouse, or taking finished goods to trucks or other vehicles for your distribution operations. Lifting with stability and strength, our wood handling forklifts can carry two to four wood packages at a time. Optional extras include special fork leveling carriages to keep sensitive wood products flat during transit, and special filters to protect the oil and hydraulics from sawdust.

Pulp is a key intermediary stage in the production and recycling of paper. Konecranes forklifts can be fitted with a rotator to enable your drivers to empty containers full of woodchips destined for pulping. An expandable bale attachment mounted on the fork shaft can handle multiple pulp bales in one lift with a capacity of up to 15 tons. A tilt feature adds to your bale handling flexibility for more precise positioning of the load when you need it.

When are moving your paper rolls in or out of storage, sensors on your Konecranes forklift collect key operational data to manage functions and reduce the risk of damage. A soft-touch paper clamp grabs the roll, but the truck cannot move until the roll is off the ground. Auto-tilt keeps the rolls vertical while in motion, and when the ground is detected, the lowering motion stops, preventing friction from the clamp on the roll. The clamp opens automatically when the roll touches the ground.

The Konecranes E-VER electric forklift is the perfect choice for wood, pulp and paper processing facilities. Compact and easy to maneuver, with no tailpipe emissions and low noise, it can be used both inside and outside on your production site.





## THE TRUCKS

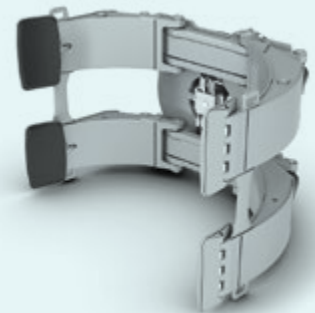
### Forklifts for wood, pulp and paper handling, 10-65 tons

Identify your production requirements, choose your truck and add your ideal features.

## CUSTOMIZE IT

### Paper roll clamp

A soft-touch paper roll clamp on your forklift grabs the roll of paper without friction or other damage to the product. Move twice as many rolls with a double-row clamp.



[MORE ATTACHMENTS ON PAGE 111](#)

PAPER AND WOOD  
**CUSTOMER CASE**

---

# Konecranes E-VER enters the wood industry

**The Moelven Group makes building products and systems in Norway and Sweden for construction around the world. Moelven Edanesågen, their sawmill in Edane, western Sweden, is one of their biggest facilities. They use forklifts to move raw wood, equipment and products around the production site.**

## The Challenge

With a growing worldwide interest in wood products, the Swedish sawmill was looking to expand their forklift fleet for more site capacity. In line with the Moelven Group's strict environmental policy, the new lifting equipment also had to produce minimal emissions to ensure sustainability throughout their value chain.

## The Solution

Moelven purchased a Konecranes E-VER 13.6-600 C electric forklift, a sturdy lifting machine with a capacity of 13,600 kg and a fully electric drivetrain powered by lithium-ion (Li-ion) batteries. Its battery management system ensures energy efficiency, while fast charging optimizes operations and minimizes downtime. A range of special features improve ergonomics, stability and safe handling in a sawmill environment.

## The Benefits

The Konecranes E-VER electric forklift aligns perfectly with Moelven's sustainability goals, because it cuts energy consumption and produces no local emissions. Smooth movement and fast acceleration allow the driver to focus on moving wood safely and efficiently. TRUCONNECT® Remote Monitoring easily integrates with the truck's smart electrics for operational efficiency and maintenance planning.

The E-VER is a silent, powerful mobile lifting machine with zero direct emissions.



**“With the addition of the Konecranes E-VER electric forklift, Moelven now has 34 Konecranes lift trucks across their Scandinavian operations. Local dealer N.C. Nielsen helps to provide the necessary support to maintain this impressive fleet.”**

DANIEL SJÖSTRAND  
Sales Director, Lift Trucks, Konecranes

# Mining

**A mine is a dusty and dangerous work environment. Built for safety and stability, Konecranes lift trucks are particularly suited for materials handling in the extreme conditions of both surface and underground mines. Our forklifts and reach stackers can carry tires, heavy machinery, and general-purpose cargo – anything required for mining operations.**

On-site mobile cranes often handle the goods arriving at a mine because it is convenient. However, a lift truck can handle containers with far more safety, speed and ease than a mobile crane, and allows the crane more availability for mining activities. With the right attachment, the truck can lift almost anything, then go quickly to any location on site. Its maneuverability also allows movement within confined spaces, including storage areas, excavations, and even underground.

Forklifts can easily handle the giant tires of mining dump trucks with special clamps. Reach stackers can lift flat racks using spreaders with folding legs for overheight cargo. Load stabilizers

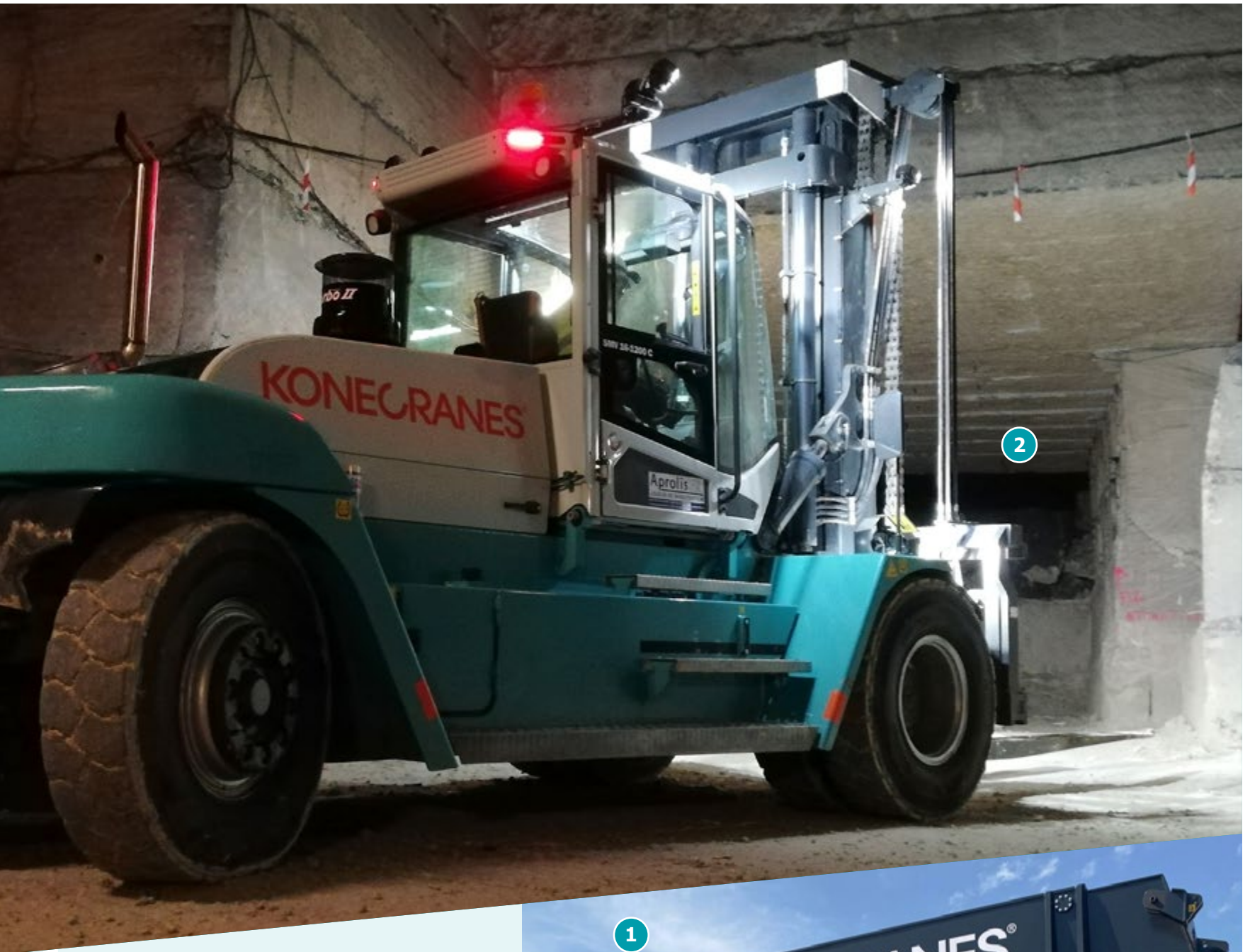
keep the truck steady. A wide variety of coil rams, magnets, grabs, hooks, forks and masts are just some of the attachments available for mining applications.

Every Konecranes lift truck has reliability and durability built in. With optional extras such as corrosion protection, overhead guards and our mining kit – consisting of a fire extinguisher, reflective bands around the truck, a tire wedge, a red flag and emergency stop buttons – you can maximize the safety of your equipment and your personnel in this highly demanding operating environment.



## THE TRUCKS

- 1 Reach stackers for container handling, 10-46 tons**  
Choose your capacity/performance ratio and add your ideal features.
- 2 Forklifts for special handling, 10-65 tons**  
Identify your production requirements and add your ideal features.



## CUSTOMIZE IT

### Boom hook

A hook attached to the reach stacker boom nose creates a dedicated hook machine for frequent hook applications.



MORE ATTACHMENTS ON PAGE 113



MINING  
**CUSTOMER CASE**

---

# Moving huge tires in a Chilean mine

**Kal Tire S.A. provides a range of tire management services for mines in Chile. The company is part of the Kal Tire Mining Tire Group, an international leader in mining tire service and supply. In this specialized field, expert knowledge is required for the proper maintenance of tires to maximize the performance and safety of mining equipment.**

## The Challenge

The Centinela mine is an open pit copper mine located some 1,350 km north of the Chilean capital Santiago, in one of the country's most important mining areas. Enormous mining trucks need giant tires for the uneven surfaces in the mine on which they drive. Kal Tire has a tire service contract with the mine, for which they required two specialist forklifts to be continuously on-site to move and help change the tires.

## The Solution

Konecranes provided two SMV 33-1200 C forklifts with a capacity of 33 tons and a wheelbase of 4,750 mm for stability and maneuverability. The fork assembly has a fully-integrated WBM tire-handling clamp with a low-profile body and grip arm design to give drivers a clear view of the load. Bead-breaking arms facilitate vertical dismounts and a hydraulic accumulator on the mast provides shock absorption against rough terrain.

## The Benefits

Optimized for the demands of a mining environment, the forklifts provide a smoother ride for both drivers and tires, better visibility for operational safety and high-pressure filters for more durable hydraulics in dusty conditions. TRUCONNECT® Premium follows each truck's performance through usage data, including tire pressure and shock monitoring, essential information to ensure efficient operation in a sometimes unpredictable mining area.



The tire-handling clamp has a low-profile body and grip arm design to give drivers a clear view of the load.



**“After we met Kal Tire’s specific requirements, and added the WBM attachment, their tire handling operations rose to another level.”**

ANDRÉS RAMIREZ  
Regional Sales Development Manager for  
Konecranes Lift Trucks.

# Defense

**Standard containers offer a convenient way to move equipment to various locations for military exercises, peacekeeping and defense. Containers can be easily loaded onto the backs of trucks for road transport, and unloaded again at their destinations. The right forklifts and reach stackers can move many different types of containers under all kinds of conditions.**

Konecranes lift trucks already play an important role in the defense of the European Union and in UN peacekeeping missions. They are easy to transport along with the containers, while their rugged design makes them suitable for the difficult and unpredictable outdoor conditions of military applications. With high flexibility, outstanding productivity and simple maintenance, they perform equally well in the storage yard or in the field.

The best lift trucks for defense applications need a long wheelbase for high stability on rough terrain. It's usual to customize them for field operations because resources in those locations

can be scarce. For example, they can have a special coupling added for pulling other trucks if one gets stuck. Extra-tough suspension and tire pressure monitoring maintain smooth driving to avoid upsetting loads on uneven ground. Choose from a huge range of safety features to enhance the protection of your personnel.

Anywhere you can take a container, you can take a Konecranes lift truck with you to unload it. We offer a broad selection of heavy-duty forklifts and reach stackers ideal for moving equipment at urban storage facilities or in challenging field operations.



## THE TRUCKS

### 1 Reach stackers for container handling, 10-46 tons

Choose your capacity/performance ratio and add your ideal features.

### 2 Forklifts for special handling, 10-65 tons

Decide on weight requirements and special attachments for non-standard cargo.



## CUSTOMIZE IT

### Triplex mast

The advantages of a triplex mast are free lift and low overall height with relatively higher maximum lifting heights. This offers more flexibility moving between indoor and outdoor applications.



MORE ATTACHMENTS ON PAGE 112



DEFENSE  
**CUSTOMER CASE**

---

# From peacekeeping operations to military defense

**Established in 1955, the Bundeswehr (Federal Armed Forces) unites the German army, navy and air force under one command. Apart from its role in defending German and EU territory, it also works in cooperation with global bodies like the UN. BwFuhrparkService GmbH is its fleet service company, responsible for acquiring vehicles for military use.**

## The Challenge

To maximize their efficiency, the Bundeswehr uses standard containers to move equipment and supplies to military locations. Therefore, it needs a fleet of compact, high-performing reach stackers to handle the containers. The lift trucks must be easy to transport over long distances and flexible enough to work efficiently in sometimes difficult and unpredictable outdoor conditions, including locations where the ground surface is uneven.

## The Solution

BwFuhrparkService purchased 39 Konecranes SMV 2216 TC 3 reach stackers with a 5,500 mm wheelbase for high stability that can stack 22-ton containers up to three high in the first row. Customizations included a special coupling to recover the vehicle or assist other trucks if one gets stuck on rough ground, tire pressure monitoring to help reduce mechanical wear and fuel consumption, and special safety features for a truly secure driving area.

## The Benefits

The modifications Konecranes made to these powerful, compact reach stackers are based on a careful study of the Bundeswehr's requirements so that the lift trucks would suit all their particular needs, especially the durability and operational safety essential for harsh and demanding environments. In addition, the truck design ensures that the machines are easy to dismantle, transport and assemble.



All 39 reach stackers have been painted military green.



**“To help smoothly integrate the trucks into operations around the country and abroad, they were delivered in twos on a weekly basis, with driver and service training provided on-site.”**

MICHAEL ANTSCHISCHKIN  
Chief of Back Office Sales Management,  
Richter Fördertechnik GmbH & Co. KG,  
local distributor for Konecranes

# Energy

**Whether you're building generators, delivering fuel or moving equipment, materials handling is essential in energy production. These specialist applications often use bulky, oversized and non-standard components, or need to transport uniquely dangerous materials. Konecranes Lift Trucks can provide powerful, safe and reliable lifting solutions for all kinds of energy providers.**

The nacelle, blades, tower sections and hub that go into a **wind turbine** are very large, heavy and prone to damage. With specialized attachments and tandem lifts when needed, Konecranes lift trucks can handle all of these parts, including the 25-160 ton steel plates welded together for support towers. Our trucks can also help transport your finished turbine to its operating site and assist with final assembly.

**Raw waste or biofuel** usually arrives at a processing plant in light, standardized containers from 12-25 tons. Compact, medium-sized lift trucks with the right attachment can easily empty the containers and take them to storage or refilling. Konecranes offers an extensive range of forklift trucks with a 180 or 360-degree rotation unit or reach stackers with a 45-degree side tilt.

On an **oil and gas** field, where the ground surface can be rough, a load stabilizer on your Konecranes forklift transforms the forks into a

horizontal clamp to handle unstable goods like pipes, barrels and tanks. A reach stacker can easily transport any large non-standard item like a tank if it is first securely fastened in a special frame the same size as a container.

Our lift trucks for **nuclear handling** are customized to meet the highest levels of environmental, security and safety standards. For example, forklifts that handle uranium oxide and reach stackers for 45-ton overpacks of intermediate level nuclear waste (ILW) can be tailored for extremely slow conditions and total manual override. Special end-lift attachments fully secure every load.

Due to their speed, variety and easy maneuverability, Konecranes lift trucks are also ideal for **infrastructure and maintenance support** at any factory, power plant or similar facility.



## THE TRUCKS

### 1 Reach stackers for energy materials handling, 10-80 tons

Identify your requirements, choose your truck with the right features and attachments.

### 2 Forklifts for energy applications, 10-65 tons

Choose the right truck, then add special attachments for standard or non-standard loads.



## CUSTOMIZE IT

### Pipe clamp

A load stabilizer transforms a forklift into a horizontal clamp to handle unstable goods like pipes, barrels and tanks.



MORE ATTACHMENTS ON PAGE 112



ENERGY  
**CUSTOMER CASE**

---

# Ghanaian pipes in full flow

**Mobicrane is a family-owned business with well over two decades of experience renting out lifting equipment in Ghana, Western Africa. In the coastal town of Takoradi, they provide cranes and lift trucks mostly to mining, oil and gas, and construction companies. As these companies have expanded their operations, rental equipment has offered flexibility in a rapidly changing economy.**

## The Challenge

Offshore oil requires drilling pipes of various sizes to be transported to oil rigs. The pipes are made of heavy steel that can withstand the pressure of being thousands of meters under the sea or under the ground. In addition, general cargo for offshore operations must be moved on and off transport. Traditionally, cranes are used for this task, but securing and lifting non-standard loads safely with a crane is a slow process.

## The Solution

Mobicrane has put five Konecranes SMV 16-1200 C forklifts into service for oil pipe yard work and general cargo. The lift truck forks slide underneath pipes and other loads smoothly for fast loading and unloading as well as easy movement around the storage yard. Their 16-ton capacity, a long wheelbase for high stability and a load indicator to prevent overload ensure that they can handle a wide range of oil and gas equipment.

## The Benefits

The drivers are full of praise for their Konecranes forklifts. They say that the controls are “excellent – intuitive and simple” to use, the truck has “good overall visibility” and its compact size and small turning circle make it “easy to maneuver” in the tight spaces of the crowded storage yard. Customers have been able to speed up the turnaround for supply vessels in the port, thanks to their skilled drivers in Konecranes lift trucks.

When asked what he liked about the Konecranes forklift, one driver smiled and said simply: "Perfect".



**"Our experience with Konecranes Lift Trucks has been outstanding. It's a very reliable product and local dealer Paterson Simons has always provided excellent support."**

PHIL COGGIN  
Operations Director, Mobicrane.



# OUR STORY



YOUR WORLD

THE INDUSTRIES

OUR STORY

THE TRUCKS

# Shaping the next- generation material handling

Konecranes is a global leader in material handling solutions, serving a broad range of customers across multiple industries. We consistently set the industry benchmark, from everyday improvements to the breakthroughs that matter most, because we know we can always find a safer, more productive and sustainable way. That's why Konecranes is trusted every day to lift, handle and move what the world needs.

Through many years of organic growth and acquisitions, Konecranes has greatly expanded operations from its humble Nordic origins and today, we have a significant international presence in the material handling industry. With our own factories supported by a global subcontractor network, we manufacture and sell all over the world .

Our business is divided into three segments – Service, Industrial Equipment and Port Solutions. Service offers specialized maintenance and spare parts, Industrial Equipment produces an extensive range of industrial cranes, and Port Solutions provides equipment, software and service for the container handling industry, including lift trucks.

As a worldwide leader in industrial lifting and port solutions, we offer unparalleled service with a truly global presence, a strong dedication to R&D to develop our future technology and a modern IT infrastructure that keeps us connected.





**A LARGE,  
SKILLED,  
GLOBAL  
WORKFORCE**

---

**A FINANCIALLY  
SOUND  
COMPANY**

---

**PRESENT IN  
ALMOST  
200  
COUNTRIES  
WORLDWIDE**

---

**2,000  
ACTIVE AND  
PENDING PATENTS**

---

**SERVICE IS OVER  
40%  
OF TOTAL SALES**

---

**EQUIPMENT IS  
ALMOST  
60%  
OF TOTAL SALES**

**WELCOME TO  
THE WORLD'S HEARTLAND  
OF LIFT TRUCKS**



Lift trucks are more than just economically important to Småland. They are something to be passed on with pride to the next generation.





# Our history

**The heritage of Konecranes Lift Trucks can be traced back to wood handling tractors in the early twentieth century in southern Sweden. The province of Småland became known as the “heartland of lift trucks” as ingenious local entrepreneurs started to develop mobile lifting equipment for other kinds of applications as well.**

In 1959, we delivered our very first lift truck, a forklift, from the Silverdalens Mekaniska Verkstad (SMV) workshop in Silverdalen, Småland.

In 1994, new management was appointed, and a year later, production moved to Markaryd, also in Småland, introducing a completely new range of lift trucks at the same time. In 2004, SMV became part of Konecranes.

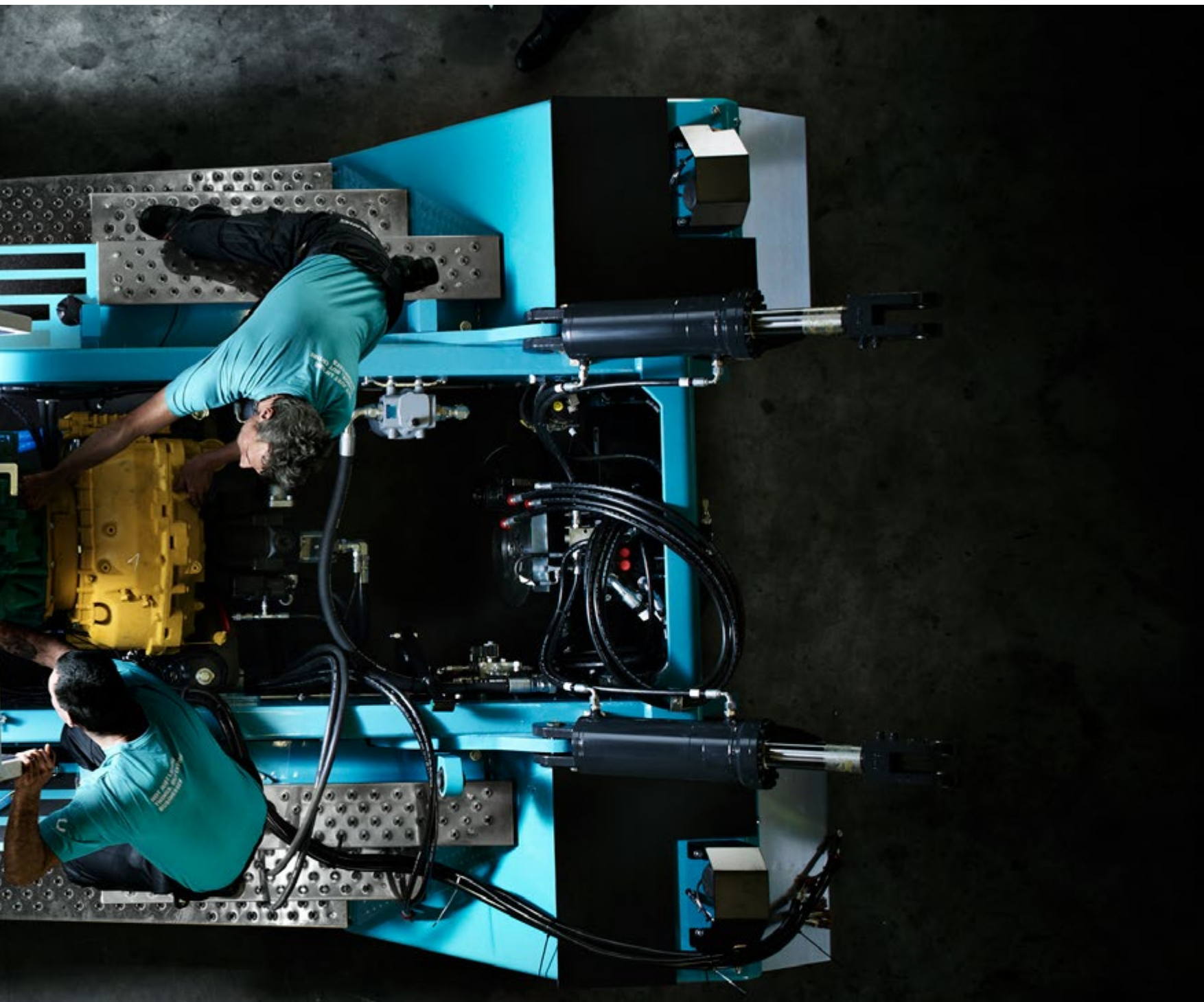
In 2014, we made a significant technical upgrade with the new Generation C, bringing exciting new features to our entire lift truck range. In 2017, we welcomed the robust, newly standardized product family called Konecranes Liftace and we added another impressive innovation in 2020 with our first E-VER electric forklift.

In 2021, we celebrated a major milestone when we delivered our ten thousandth lift truck to our long-standing customer The Absolut Company. Coincidentally, they had also bought our first commercial reach stacker in 1995.

The headquarters for Konecranes Lift Trucks is still in Markaryd, but today our business reach extends across the world, with the latest in lifting technology and industrial design rooted in a tradition of fine truck craftsmanship dating back over 60 years.



We make  
lift trucks  
for your  
world

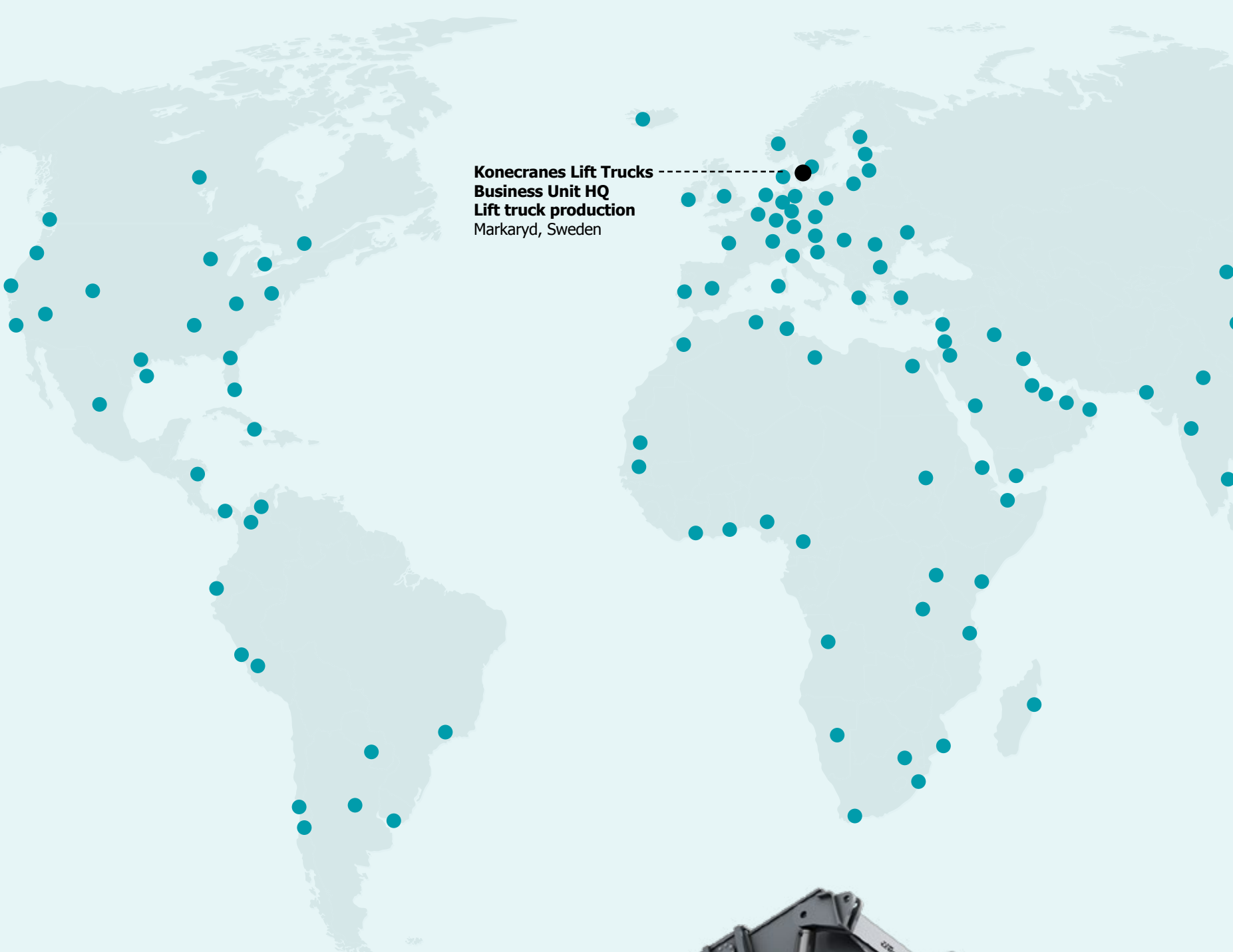


The true value of our lift trucks is in how well they can help you to succeed in the unique world where you work. So we ask you a lot of questions to help us understand that world: what do you need to lift, how fast and how often? Where could you improve your production processes? How safe are your drivers right now, and could they be safer? What's the weather like in your location? What about your long-term climate challenges?

We owe our success to the fact that we have always listened to you, our customers.

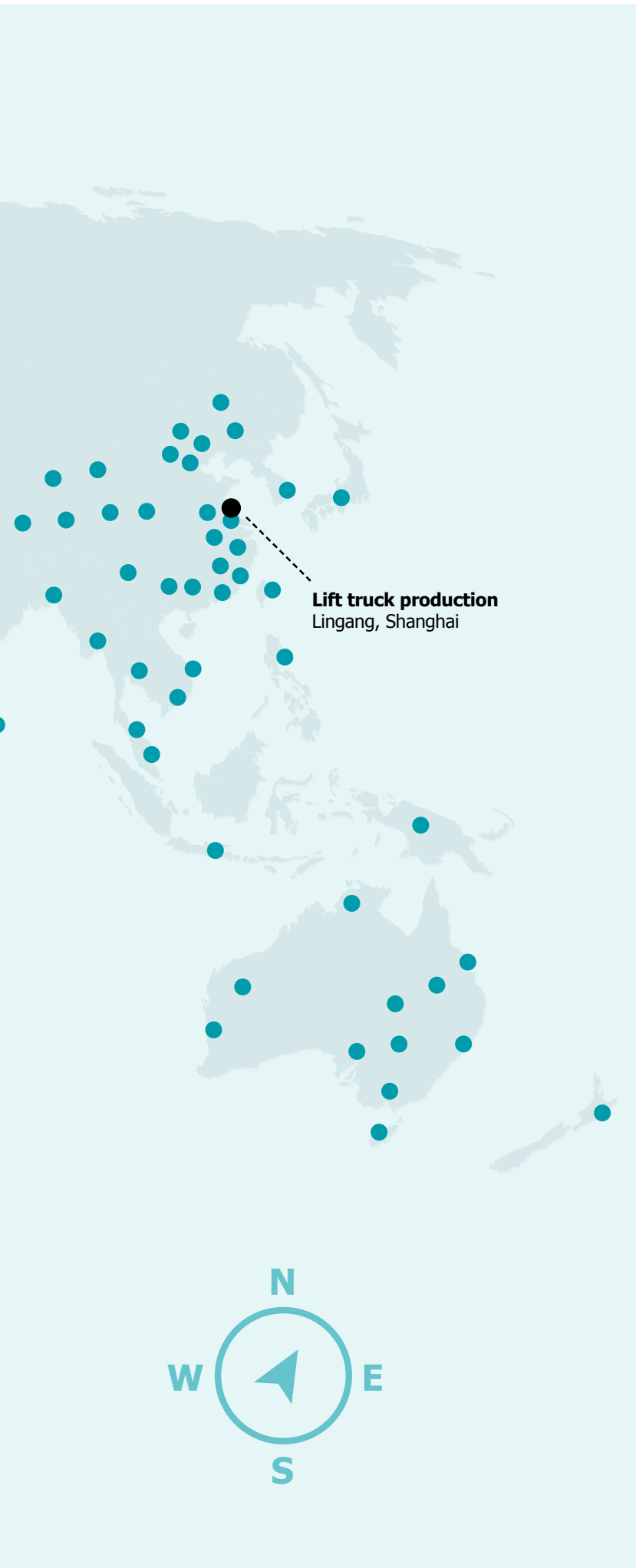
No two customers are exactly alike. Every day, they tell us what they want from their lift trucks. We use that information to build the toughest and strongest heavy-duty lift trucks for you, specially tailored for your world.

Konecranes lift trucks are available all over the globe through our regional operations and respected local distributors, supported with a full range of spare parts and the widest service reach of any company in the material handling business.



- Konecranes Lift Truck distributors
- Konecranes Lift Truck business unit





# Our distributors: A true partnership

**You can get our lift trucks in two main ways: directly via our own sales and service organizations in around 10 countries, and indirectly via distributors in more than 80 countries.**

Our most valued business partners are our distributors. With their local knowledge and operational insights, they can help you to make the right equipment choices. They keep up a ready supply of spare parts, or know how to get them quickly, and they provide maintenance services close to you, so your equipment is always in good working order.

The secret behind the world famous Konecranes customer service is our extensive distributor network. We only appoint the most respected distributors in the lift truck business who share our values of mutual trust and service commitment. And we honor their contribution every year with our annual distributor awards.

Our distributors know Konecranes equipment and they know you. They can help you to decide which are the best lift trucks for your world.

# THE TRUCKS

**We now present our two product families:**



**Konecranes lift trucks provide the flexibility and tailoring required for any lifting need.**



**The Konecranes Liftace is a strong, reliable workhorse for routine daily lifting.**

# Reach stackers

The Konecranes reach stacker offers a wide range of movement for different kinds of materials handling. The Liftace reach stacker is a dependable, robust and cost-effective machine specialized in handling containers.

Our reach stackers are built around a strong box-type chassis and reliable components with a durable top-lift spreader. You get high handling rates, eco-efficiency and maximum uptime.

## 1 Impressive spreader

Suits 20/40/53 ft containers, 300 degrees rotation, 1600 mm total sideshift, 4 lift eyes for sling cargo. MPS mechanical ( $\pm 2$  deg) or HPS hydraulic pile slope ( $\pm 6$  deg). The combi spreader (Konecranes reach stacker only) can also lift trailers and swap bodies with 4 folding lift legs.

## 2 Outstanding ergonomics

With driver-focused design, the OPTIMA cabin is the most spacious cabin on the market. Everything is within easy reach.

## 3 Remarkable visibility

Curved glass gives drivers an exceptional range of vision through large, lowered windows with no corner posts and a thin but strong roof crossmember.

## 4 Electronic machine control

The EMC Master displays all vital components and functions on a 7-inch touch screen. CanBus technology improves engine and transmission reliability as well as hydraulic and joystick control.

## 5 Smart load-sensing hydraulics

Specially designed hydraulics sense the weight of the load and adapt lifting power accordingly. The truck gives maximum power only when needed, so it consumes less fuel while reducing emissions and noise.

## 6 Eco-efficient engine

A certified low-emission engine provides extra-high torque at low revs for reduced fuel consumption, driveline adjustments improve efficiency still further and HVO100 biofuel minimizes emissions.

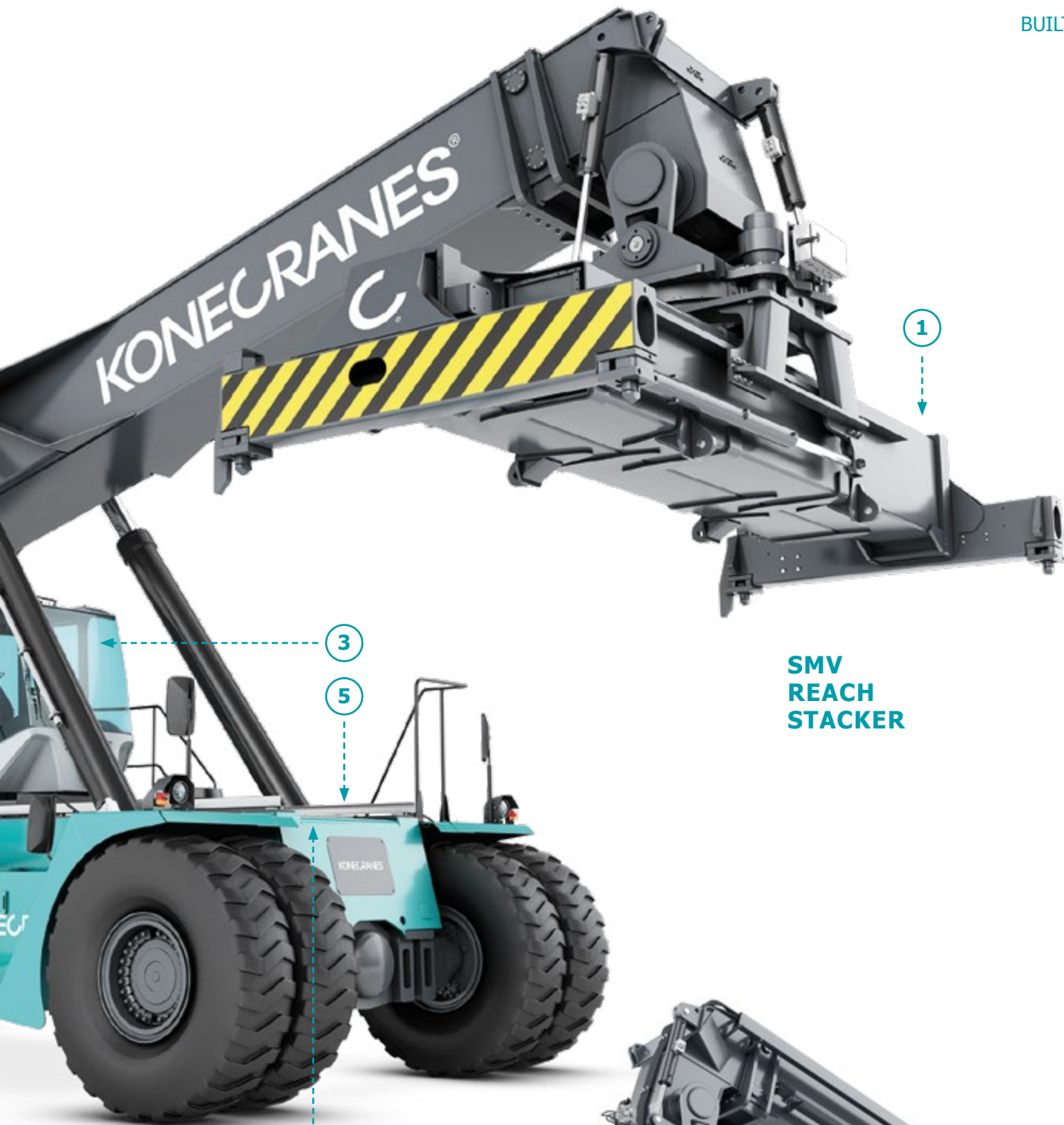


## REACH STACKERS 10–46 TONS

Technical data	For container handling	For industrial handling	For intermodal handling	For barge handling
<b>Lifting capacity</b>	from 10–8–5 tons to 46–46–45 tons	from 35–50 tons to 40–80 tons	from 42–24–10 tons to 46–46–45 tons	from 46–38–24 t (yard) & 46–31–19 t (barge) to 46–46–43–34 t (yard) & 46–45–37–28 t (barge)
<b>Wheelbase</b>	5000 mm – 8000 mm	6400 mm – 8000 mm	6400 mm – 8000 mm	7500 mm – 9000 mm

## LIFTACE REACH STACKERS 45 TONS

Technical data	For container handling
<b>Lifting capacity</b>	45–32–17 t
<b>Wheelbase</b>	6400 mm



**SMV  
REACH  
STACKER**



**LIFTACE  
REACH  
STACKER**

# Forklifts

**Konecranes forklifts utilize well-proven technology with innovative features to raise your materials handling productivity. The Liftace forklift is a reliable, sturdy workhorse, efficient and cost-effective with long-lasting quality.**

**The Konecranes E-VER electric forklift is a heavy-duty lift truck that combines durable Konecranes machinery with the latest in eco-efficiency.**

## 1 Forks and other attachments

Our forklifts can use a wide range of forks as well as coil rams, spreaders, roll clamps, and any attachment you might require for specialized materials handling. A quick-change system makes it easy to adapt your forklift to different lifting needs.

## 2 The right mast

Select the right lifting mast from a wide range, including options such as Duplex, Triplex, free lift – whatever suits your application.

## 3 Outstanding ergonomics

With driver-focused design, the OPTIMA cabin is the most spacious cabin on the market. Everything is within easy reach. Visibility is excellent in all directions.

## 4 Electronic machine control

The EMC Master displays all vital components and functions on a 7-inch touch screen. CanBus technology improves engine and transmission reliability as well as hydraulic and joystick control.

## 5 Smart load-sensing hydraulics

Specially designed hydraulics sense the weight of the load and adapt lifting power accordingly. The truck gives maximum power only when needed, so it consumes less fuel while reducing emissions and noise.

## 6 Powerful eco-efficient engine

A certified low-emission engine provides extra-high torque at low revs for reduced fuel consumption, Power Drive can improve efficiency still further and HVO100 biofuel minimizes emissions. To eliminate carbon emissions, choose the E-VER electric forklift.

## 7 Maintenance-free brakes

Brakes with continuous oil cooling provide full braking force in every situation.

## 8 Heavy-duty box-type chassis

The strongest on the market and the foundation of long-lasting, high performance.

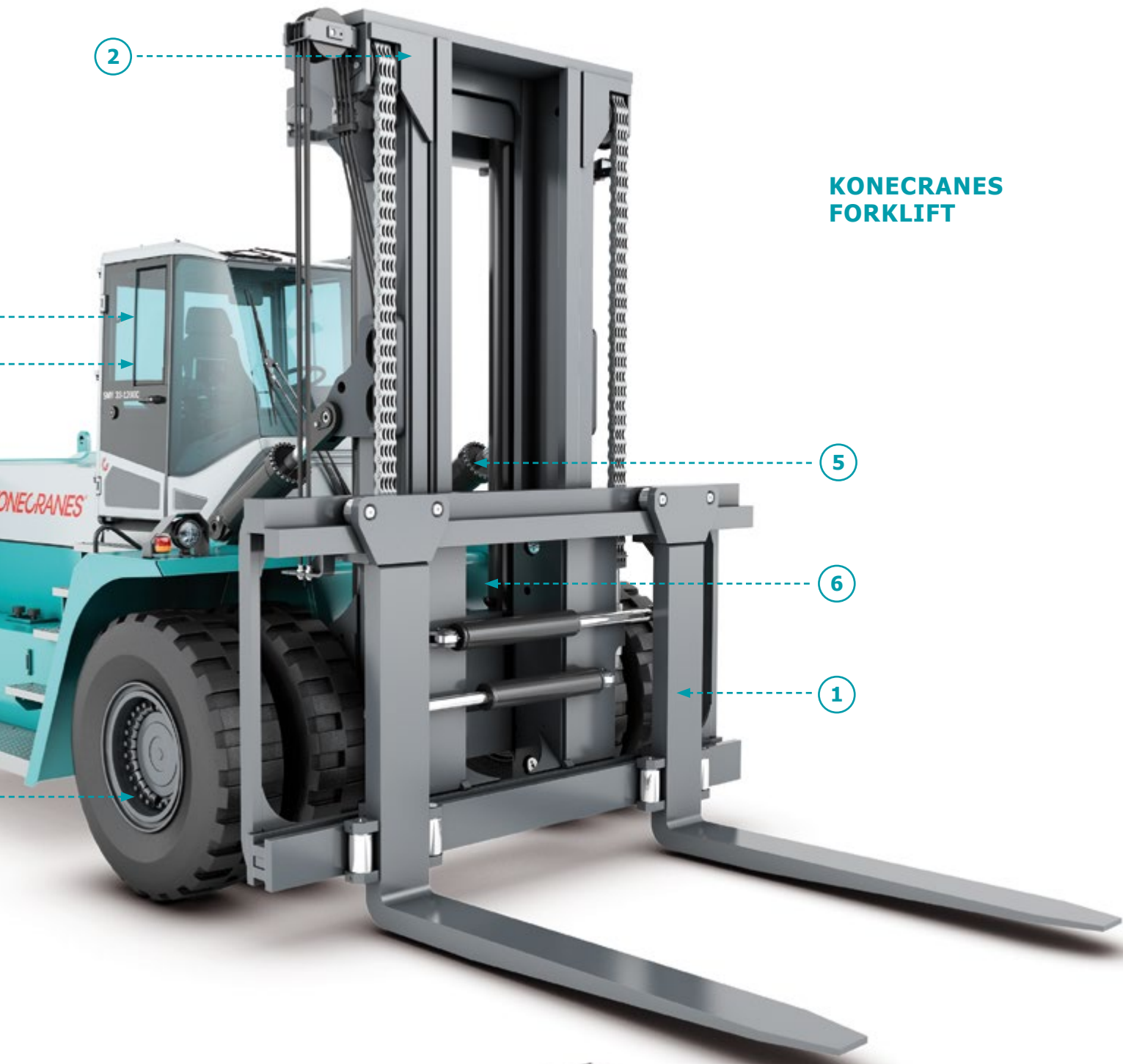


## FORKLIFTS 10–65 TONS

Technical data	Light	Medium	Heavy
<b>Lifting capacity</b>	10 t at 600 mm – 18 t at 900 mm	18 tons at 1200 mm – 33 tons at 1200 mm	37 tons at 1200 mm – 65 tons at 1200 mm
<b>Wheelbase</b>	3000 mm – 3750 mm	4000 mm – 4750 mm	5000 mm – 6000 mm

## LIFTACE FORKLIFTS 10–16 TONS

Technical data	
<b>Lifting capacity</b>	10 t at 600 mm – 16 t at 600 mm
<b>Wheelbase</b>	3000 mm – 3250 mm



**KONECRANES  
FORKLIFT**



**LIFTACE  
FORKLIFT**

# Empty container handlers

The Konecranes empty container handler can lift up to 8 containers high due to its powerful engine and wide mast. The Liftace empty container handler is well-known for its high performance and ease of use.

## 1 Very fast lifting and lowering

With few hoses and cables, you have minimal maintenance and downtime. A heavy-duty mast and tilt cylinder offers high stability and safety.

## 2 Single and double stacking

Telescopic sidelifift spreaders handle standard 20-40 ft containers or non-standard 45-53 ft containers. Large sideshift, mechanical pile slope and optional hydraulic pile slope. Single mode lifts up to 8 containers high, and double mode lifts up to 2-over-6.

## 3 Outstanding ergonomics

With driver-focused design, the OPTIMA cabin is the most spacious cabin on the market. Everything is within easy reach. Visibility is excellent in all directions.

## 4 Electronic machine control

The EMC Master displays all vital components and functions on a 7-inch touch screen. CanBus technology improves engine and transmission reliability as well as hydraulic and

## 5 Smart load-sensing hydraulics

Specially designed hydraulics sense the weight of the load and adapt lifting power accordingly. The truck gives maximum power only when needed, so it consumes less fuel while reducing emissions and noise.

## 6 Eco-efficient engine

A certified low-emission engine provides extra-high torque at low revs for reduced fuel consumption, Power Drive can improve efficiency still further and HVO100 biofuel minimizes emissions.

## 7 Maintenance-free brakes

Brakes with continuous oil cooling provide full braking force in every situation.

## EMPTY CONTAINER HANDLERS 8–11 TONS

Technical data	Light	Medium	Heavy
<b>Lifting capacity</b>	8 t from 3 to 6 high	9 t from 5 to 8 high	10/11 t from 4 to 8 high
<b>Wheelbase</b>	3750 mm	4500 mm	4500 mm

## LIFTACE EMPTY CONTAINER HANDLERS 9–10 TONS

Technical data	Medium	Heavy
<b>Lifting capacity</b>	9 t from 5 to 8 high	10 t from 5 to 8 high
<b>Wheelbase</b>	4500 mm	4500 mm

2

3

4

7



**KONECRANES  
EMPTY  
CONTAINER  
HANDLER**



# Laden container handlers

**The Konecranes laden container handler is a stable and compact machine that can move your containers with just the right balance of efficiency and precision within your container handling process.**

## 1 Reliable lifting

The lift masts have been specially adapted for laden container handling. With few hoses and cables, you have minimal maintenance and downtime.

## 2 Single stacking spreader

Top-lift spreaders can handle standard 20-40 ft containers or non-standard 45-53 ft containers as well as sling cargo, large sideshift, slew left/right, mechanical pile slope and optional mechanical pile slope. Depending on the cabin, stacking can be up to 6 high.

## 3 Outstanding ergonomics

With driver-focused design, the OPTIMA cabin is the most spacious cabin on the market. Everything is within easy reach. Visibility is excellent in all directions.

## 4 Electronic machine control

The EMC Master displays all vital components and functions on a 7-inch touch screen. CanBus technology improves engine and transmission reliability as well as hydraulic and joystick control.

## 5 Smart load-sensing hydraulics

Specially designed hydraulics sense the weight of the load and adapt lifting power accordingly. The truck gives maximum power only when needed, so it consumes less fuel while reducing emissions and noise.

## 6 Powerful eco-efficient engine

A certified low-emission engine provides extra-high torque at low revs for reduced fuel consumption, Power Drive can improve efficiency still further and HVO100 biofuel minimizes emissions.

## 7 Maintenance-free brakes

Brakes with continuous oil cooling provide full braking force in every situation.

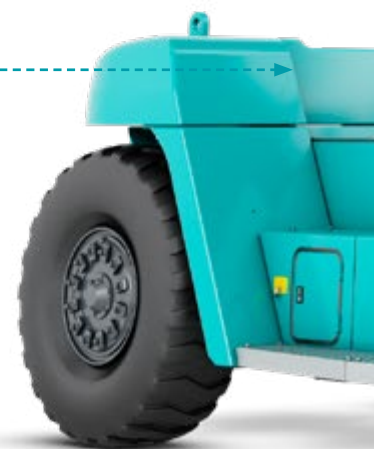
## 8 Heavy-duty box-type chassis

The strongest on the market and the foundation of long-lasting, high performance.

3

4

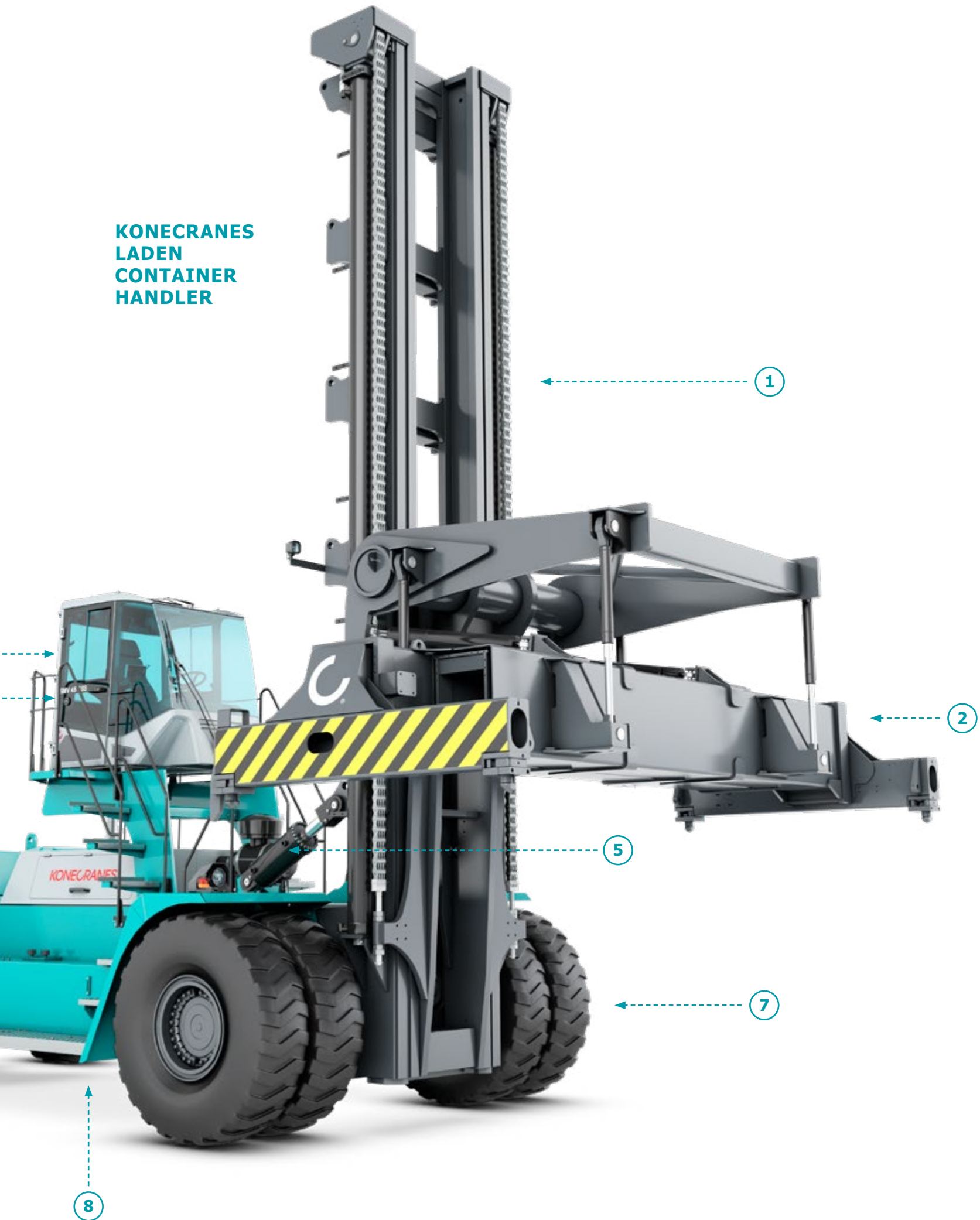
6



## LADEN CONTAINER HANDLERS 26–45 TONS

Technical data	Light	Medium	Heavy
Lifting capacity	26–30 t	33–43 t	36.3–45 t
Wheelbase	4750 mm	5000 mm – 5500 mm	6000 mm

**KONECRANES  
LADEN  
CONTAINER  
HANDLER**



8

7

5

2

1

# OPTIMA

## - A room with a view

**The OPTIMA cabin combines comfort and easy-to-use controls in a spacious working area and a clear view in all directions. Its carefully detailed, driver-friendly design adds safety and productivity to your Konecranes lift trucks.**

### **Remarkable visibility**

Very large, lowered windows with no corner posts, a thin but strong roof crossmember and curved panels create impressive sightlines to the front, sides and rear.

### **Electronic Machine Control (EMC Master)**

Full monitoring of all vital components and functions on an integrated touch screen with programmable settings. CanBus technology improves mechanical reliability and driver control.

### **Ergonomic instrumentation**

Designed with driver input, the ergonomic instrumentation allows easy access to all controls without reducing space, plus customization options such as mini-wheel steering and variable layout.

### **Driver enjoyment**

A fully adjustable seat, climate control, good ventilation, interior LED lights – the pleasant cabin experience will make your drivers look forward to using your Konecranes lift trucks.

### **Choice of lift controls**

Depending on the truck, we offer lifting levers or an electronic joystick with auto accelerator/power control that respond to a soft touch throughout every handling operation.

### **Smooth driving experience**

Efficient engines or electric motors make less noise and vibration, which is further reduced by curved glass panels as well as the sound-absorbent walls and floor.

### **Cabin strength and durability**

The steel structure of the cabin is stronger than many standards require to protect drivers from potential hazards in unpredictable work areas.

### **Hot and cold**

Standard temperature tolerance can be upgraded for more challenging environments such as the extreme heat of a smelter or the intense cold of a harsh winter.

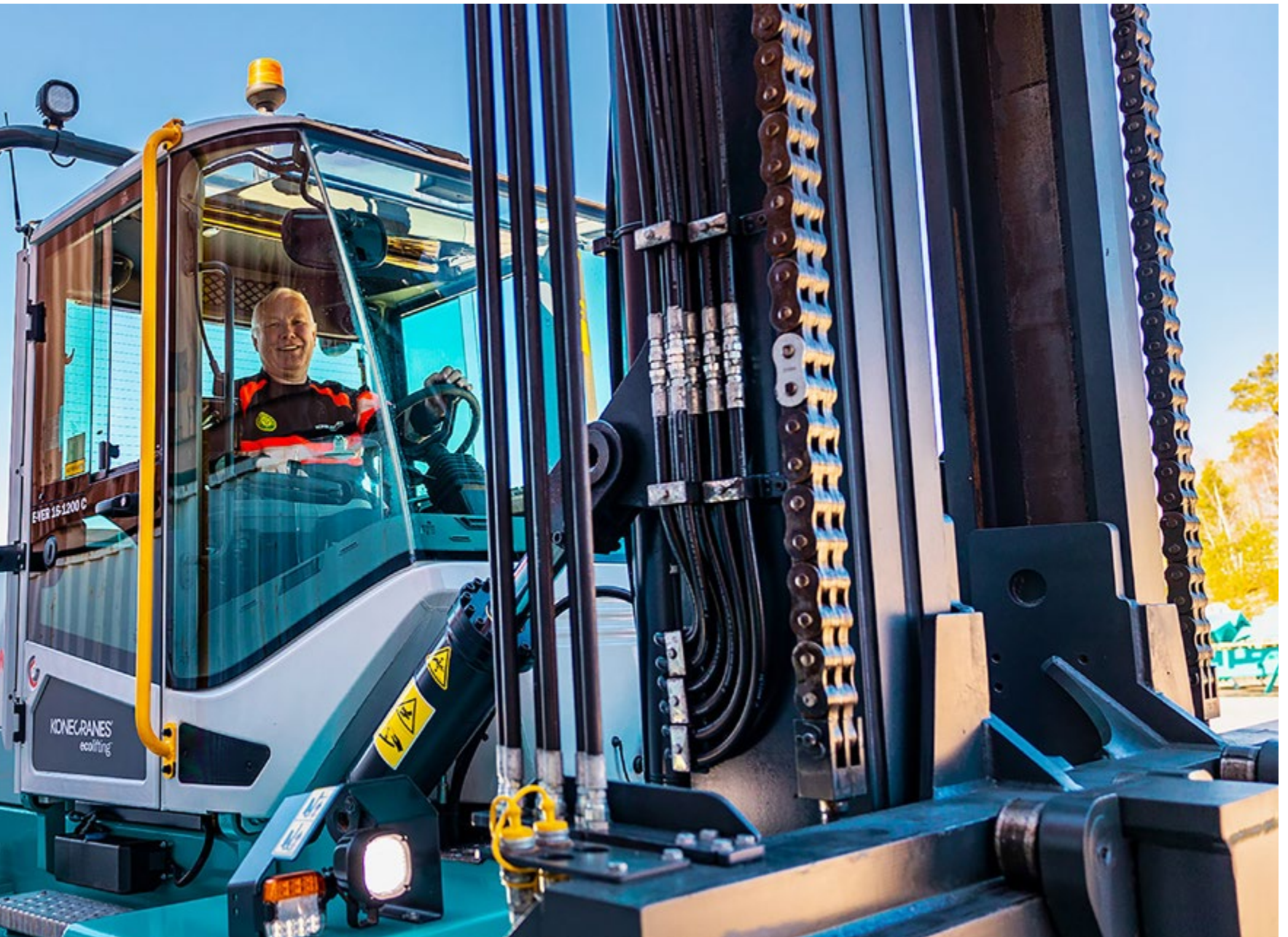
### **Move the cabin**

For special applications, the OPTIMA cabin can be rear-mounted, front-mounted or placed higher on the truck. Other options include a hydraulic sliding cabin, an elevating cabin and even remote control for dangerous maneuvers.

### **Raise the roof**

The OPTIMA Optimal cabin gives you an extra 125 mm height. With all the benefits of the standard cabin, you have more space for additional equipment and your drivers can continue to wear a safety helmet while operating the truck.





YOUR WORLD

THE INDUSTRIES

OUR STORY

THE TRUCKS

# The world's widest range of Heavy-duty lift trucks

## FORKLIFTS, 10 TO 18 TONS



Model name	Capacity	Wheelbase
SMV 10-600 C	10 tons at 600 mm	3000 mm
SMV 12-600 C	12 tons at 600 mm	3000 mm

## FORKLIFTS, 18 TO 33 TONS



Model name	Capacity	Wheelbase
SMV 18-1200 C	18 tons at 1200 mm	4000 mm
SMV 20-1200 C	20 tons at 1200 mm	4000 mm

## FORKLIFTS, 37 TO 65 TONS



Model name	Capacity	Wheelbase
SMV 37-1200 C	37 tons at 1200 mm	5000 mm



Model name	Capacity	Wheelbase
SMV 10-1200 C	10 tons at 1200 mm	3250 mm
SMV 13.6-600 C	13.6 tons at 600 mm	3250 mm



Model name	Capacity	Wheelbase
SMV 22-1200 C	22 tons at 1200 mm	4250 mm
SMV 23.6-1200 C	23.6 tons at 1200 mm	4250 mm
SMV 25-1200 C	25 tons at 1200 mm	4250 mm



Model name	Capacity	Wheelbase
SMV 42-1200 C	42 tons at 1200 mm	5500 mm
SMV 45-1200 C	45 tons at 1200 mm	5500 mm
SMV 50-1200 C	50 tons at 1200 mm	6000 mm



Model name	Capacity	Wheelbase
SMV 12-1200 C	12 tons at 1200 mm	3500 mm
SMV 16-600 C	16 tons at 600 mm	3500 mm
SMV 16-900 C	16 tons at 900 mm	3500 mm



Model name	Capacity	Wheelbase
SMV 28-1200 C	28 tons at 1200 mm	4500 mm
SMV 30-1200 C	30 tons at 1200 mm	4750 mm
SMV 32-1200 C	32 tons at 1200 mm	4750 mm
SMV 33-1200 C	33 tons at 1200 mm	4750 mm



Model name	Capacity	Wheelbase
SMV 52-1200 C	52 tons at 1200 mm	6000 mm
SMV 55-1200 C	55 tons at 1200 mm	6000 mm



Model name	Capacity	Wheelbase
SMV 15-1200 C	15 tons at 1200 mm	3750 mm
SMV 16-1200 C	16 tons at 1200 mm	3750 mm
SMV 18-600 C	18 tons at 600 mm	3750 mm
SMV 18-900 C	18 tons at 900 mm	3750 mm



Model name	Capacity	Wheelbase
SMV 60-1500 C	60 tons at 1500 mm	6000 mm
SMV 65-1200 C	65 tons at 1200 mm	6000 mm

**EMPTY CONTAINER HANDLERS**

**Single stacking**

3–6 high  
up to 8 tons



Model name	Capacity	Wheelbase
SMV 3 ECC 80	8 tons at 1220 mm	3750 mm
SMV 4 ECC 80	8 tons at 1220 mm	3750 mm
SMV 5 ECC 80	8 tons at 1220 mm	3750 mm
SMV 6 ECC 80	8 tons at 1220 mm	3750 mm

**Single stacking**

5–8 high  
up to 9 tons



Model name	Capacity	Wheelbase
SMV 5/6 ECC 90	9 tons at 1220 mm	4500 mm
SMV 6/7 ECC 90	9 tons at 1220 mm	4500 mm
SMV 7/8 ECC 90	9 tons at 1220 mm	4500 mm

**Double stacking**

4–8 high  
up to 11 tons



Model name	Capacity	Wheelbase
SMV 4/5 ECC 100 DS	10 tons at 1220 mm	4500 mm
SMV 5/6 ECC 100 DS	10 tons at 1220 mm	4500 mm
SMV 6/7 ECC 100 DS	10 tons at 1220 mm	4500 mm
SMV 4/5 ECC 110 DS	11 tons at 1220 mm	4500 mm
SMV 5/6 ECC 110 DS	11 tons at 1220 mm	4500 mm
SMV 6/7 ECC 110 DS	11 tons at 1220 mm	4500 mm

DS = double-stacking spreader

**LADEN CONTAINER HANDLERS**

**Low cabin**

3–4 high  
26–30 tons



Model name	Capacity	Wheelbase
SMV 33 G3-G4	30/26 tons at 1490/1730 mm	4750 mm

**High/mid cabin**

4 high  
33–35 tons



Model name	Capacity	Wheelbase
SMV 37 GC4S	35/33 tons at 1490/1730 mm	5000 mm

**Low cabin**

3–4 high  
33–45 tons



Model name	Capacity	Wheelbase
SMV 37 G3-G4	35/33 tons at 1490/1730 mm	5000 mm
SMV 45 G4S	43/41 tons at 1490/1730 mm	5500 mm
SMV 52 G4S	45/43 tons at 1490/1730 mm	6000 mm

**High/mid/rear cabin**

4–5–6 high  
36–45 tons



Model name	Capacity	Wheelbase
SMV 45 GC3S-GC4S	43/41 tons at 1490/1730 mm	5500 mm
SMV 45 GC5S	42/41 tons at 1490/1730 mm	5500 mm
SMV 52 GC3S-4S-5S	45/43 tons at 1490/1730 mm	6000 mm
SMV 52 GC6R	38.5/36.3 tons at 1490/1730 mm	6000 mm

Other models upon request

# The world's widest range of Heavy-duty lift trucks

## REACH STACKERS FOR Container handling 10 to 46 tons



Model name	Capacity	Wheelbase
SMV 108 TC6	10-8-5 tons	5000 mm
SMV 128 TC6	12-8-4.5 tons	5000 mm



Model name	Capacity	Wheelbase
SMV 4228TC5 (TC6)*	42-28-14 tons	6400 mm
SMV 4628TC5 (TC6)*	45-28-14 tons	6400 mm
SMV 4632TC5 (TC6)*	45-32-17 tons	6400 mm
SMV 4632TC6H (6x9'6")*	45-32-17-9 tons	6400 mm



Model name	Capacity	Wheelbase
SMV 4643TC5	46-43-25 tons	7250 mm
SMV 4643TCX5**	46-45-31 tons	7250 mm
SMV 4644TC5	46-44-26 tons	7500 mm
SMV 4644TCX5**	46-45-35 tons	7500 mm



Model name	Capacity	Wheelbase
SMV 2216 TC3	22-16-6 tons	5500 mm
SMV 2518 TC3	25-18-8 tons	5500 mm



Model name	Capacity	Wheelbase
SMV 4636TC5 (TC6)*	46-36-20 tons	6400 mm
SMV 4636TCX5 (TCX6)**	46-38-25 tons	6400 mm
SMV 4638TC5 (TC6)*	46-38-20 tons	6400 mm
SMV 4638TCX5 (TCX6)**	46-42-28 tons	6400 mm



Model name	Capacity	Wheelbase
SMV 4646TC5	46-46-38 tons	8000 mm
SMV 4646TCX5	46-46-45 tons	8000 mm

\*TC5 = 5 high, TC6 = 6 high  
\*\*TCX = Capacity with support jacks engaged  
Other models upon request

\*TC5 5 high, TC6 = 6 high  
\*\*Front jacks down

# What do you need to lift?

## REACH STACKERS FOR Intermodal handling 42 to 46 tons



Model name	Capacity	Wheelbase
SMV 4224 CC5	42-24-10 tons	6400 mm
SMV 4628 CC5	46-28-14 tons	6400 mm
SMV 4632 CC5	46-32-17 tons	6400 mm
SMV 4632 CCX5***	46-34-21 tons	6400 mm
SMV 4634 CC5	46-34-17 tons	6400 mm
SMV 4634 CCX5***	46-38-25 tons	6400 mm

Model name	Capacity	Wheelbase
SMV 4646 CC5	46-46-34 tons	8000 mm
SMV 4646 CCX5***	46-46-45 tons	8000 mm

\*\*TCX = Capacity with support jacks engaged  
 \*\*\*CCX = Capacity with support jacks engaged  
 Other models upon request

## REACH STACKERS FOR Industrial handling 35 to 80 tons



## REACH STACKERS FOR Barge handling 46 tons



Model name	Capacity	Wheelbase
SMV 4638 CC5	46-38-22 tons	7250 mm
SMV 4638 CCX5	46-41-29 tons	7250 mm
SMV 4639 CCX4	46-41-34.5 tons	7500 mm
SMV 4639 CC5	46-39-24 tons	7500 mm
SMV 4639 CCX5***	46-41-33 tons	7500 mm

Model name	Capacity	Wheelbase
SMV 4644 TC4 (BH)	46-38-24 tons (yard)	7500 mm
	46-31-19 tons (barge)	7500 mm
SMV 4644 TCX4 (BH)**	46-42-32 tons (yard)	7500 mm
	46-38-27 tons (barge)	7500 mm
SMV 4646 TC3 (BH)	46-46-36 tons (yard)	9000 mm
	46-38-31 tons (barge)	9000 mm
SMV 4646 RCX4 (BH)**	46-46-43-34 tons (yard)	9000 mm
	46-45-37-28 tons (barge)	9000 mm

Model name	Capacity	Wheelbase
SMV 4228	35-50 tons	6400 mm
SMV 4628	35-50 tons	6400 mm
SMV 4632	35-50 tons	6400 mm
SMV 4636	35-50 tons	6400 mm
SMV 4643	40-60 tons	7250 mm
SMV 4646	40-80 tons	8000 mm



# Konecranes Liftace lift trucks

## Strong standard solutions

**REACH STACKER**  
45 tons



Model name	Capacity	Wheelbase
4532 TCE 5	45-32-17 tons	6400 mm

**FORKLIFTS**  
10 to 16 tons



Model name	Capacity	Wheelbase
F 10-600 C	10 tons at 600 mm	3000 mm
F 12-600 C	12 tons at 600 mm	3000 mm
F 14-600 C	14 tons at 600 mm	3250 mm
F 15-600 C	15 tons at 600 mm	3250 mm
F 16-600 C	16 tons at 600 mm	3250 mm

**EMPTY CONTAINER HANDLERS**  
9 to 10 tons



Model name	Capacity	Wheelbase
E 5/6 ECC 9	9 tons at 1220 mm	4500 mm
E 6/7 ECC 9	9 tons at 1220 mm	4500 mm
E 7/8 ECC 9	9 tons at 1220 mm	4500 mm
E 5/6 ECC 10 DS	10 tons at 1220 mm	4500 mm
E 6/7 ECC 10 DS	10 tons at 1220 mm	4500 mm
E 7/8 ECC 10 DS	10 tons at 1220 mm	4500 mm

# Spreaders

For container handling and intermodal handling

## EMPTY CONTAINER HANDLING



### SINGLE-STACKING SPREADER

Telescopic side-lift spreader with vertical twist locks for handling empty ISO and Binnencontainers up to 9 tons.



### DOUBLE-STACKING SPREADER

Telescopic side-lift spreader for handling two empty ISO/reefer containers simultaneously up to 11 tons.



### REACH STACKER SPREADER FOR EMPTY CONTAINERS

Telescopic spreader for empty ISO containers with lifting capacity up to 12 tons.

## LADEN CONTAINER HANDLING



### SPREADER FOR LADEN CONTAINERS

Telescopic toplift spreader for laden ISO containers with lifting capacity up to 45 tons.



### FORKLIFT ATTACHMENT

Container spreader with inverted forks and fork shafts. Other types and combinations are available.



### REACH STACKER SPREADER

Telescopic spreader for laden ISO containers with lifting capacity up to 46 tons.

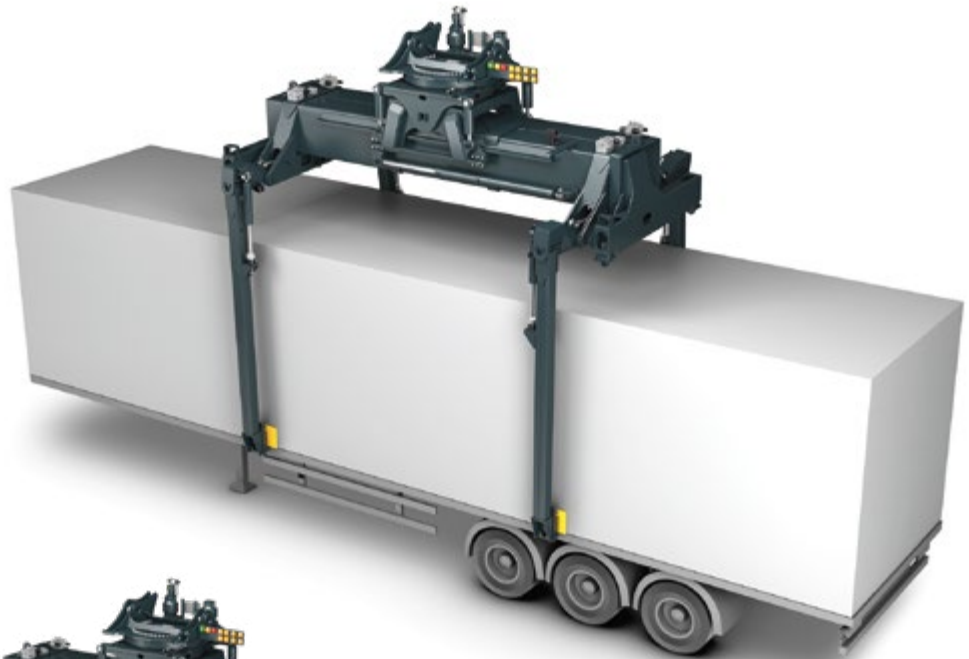
## OVERHEIGHT CARGO AND FLAT RACKS



### REACH STACKER ATTACHMENT FOR LADEN CONTAINER HANDLING

Telescopic spreader with overheight folding legs for open-top containers and flat racks with extra high cargo. Flat racks often have overheight cargo that must be lifted like this.

## COMBI HANDLING OF CONTAINERS AND TRAILERS



### REACH STACKER SPREADER FOR INTERMODAL HANDLING

Telescopic intermodal spreader (combi/piggyback) for laden ISO containers, swap bodies and trailer handling. Lifting capacity up to 46 tons (in twistlocks and lifting legs).

# Attachments for forklifts



**STANDARD FORK**  
different cross-sections, lengths, tapering and reinforcements.



**FORK SHAFT SYSTEM HOOK-TYPE**  
for wood and paper handling.



**FORK SHAFT SYSTEM, PIN TYPE**  
for handling wood, paper and metals, and mining applications.



**STANDARD CARRIAGE WITH INTEGRATED FORKS,**  
sideshift and fork positioning.



**CARRIAGE WITH KISSING FORKS**  
for steel handling. Chamfering on forks. This means less risk of damaging the goods.



**CARRIAGE WITH REINFORCED FORKS**  
for round cargo.



**SINGLE COIL RAM**  
with fork shaft.



**DOUBLE COIL RAM**  
with fork shaft.



**STEEL WIRE RAM WITH CARRIAGE**  
for metals handling.



**CARRIAGE WITH ONE LEVELLING FORK**  
(up/down) for sensitive gargo like sawmill products.



**CARRIAGE WITH CENTER LEVELING**  
(2 forks) for sensitive gargo.



**CARRIAGE WITH FORK SHAFT SYSTEM**  
(multi-function and quick change), pintype and hook-type versions.



**DIFFERENT CONTAINER SPREADERS**  
with inverted forks and fork shafts.



**MULTIPLE PAPER ROLL CLAMP**  
(single or double).



**PAPER ROLL CLAMP**  
(single only).

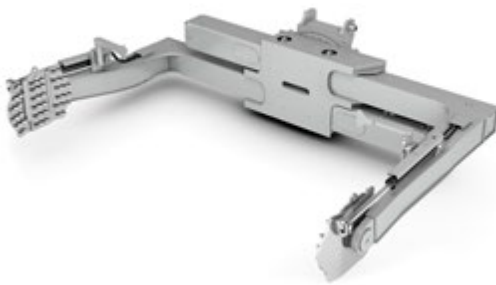
# Attachments for forklifts



**FORK ROTATOR CARRIAGE**  
for positioning loads.



**CONCRETE TUBE CLAMP**  
(different versions)



**TIRE HANDLER**  
for mining applications.



**PIPE CLAMP**  
for stabilizing loads.

## MASTS FOR FORKLIFTS AND EMPTY CONTAINER HANDLERS



**DUPLEX, 2-STAGE, NO FREELIFT**  
(standard)



**DUPLEX, 2-STAGE WITH FREELIFT**  
specific for low-ceiling warehouses.



**TRIPLEX, 3-STAGE WITH FREELIFT**  
specific for very low-ceiling warehouses.

# Attachments for reach stackers



**INDUSTRIAL TOOL CARRIER SYSTEM**  
Power Pile Slope allows multi-function application connected different tools, as coil hooks.



**HYDRAULIC STEEL SLAB GRAB UNIT**  
with pairs of hydraulic lifting jaws, specific for steel slab handling (or similar special operations).



**COIL HOOK**  
Slave attachments designed for the handling of e.g. sheet metal coils in the eye horizontal position.



**LIFTING HOOK**  
for handling aluminium, steel and/or mining components and products.



**BOOM HOOK**  
Attach to a reach stacker boom for a dedicated hook machine.



**HOOK FOR LIFTING AND HANDLING TOWER SEGMENTS**  
(wind or energy industry)

# Why choose Konecranes Lift Trucks?

**Following a long tradition of heavy-duty lift truck craftsmanship, Konecranes is dedicated to providing you with quality, high-performing lifting equipment that improves your productivity, safety and eco-efficiency.**

The true value of our trucks is not in the price, but in how useful they are to you, our customers. Built to last and easy to upgrade, they utilize the latest technology in innovative ways to meet the mobile lifting needs in your industry.

Konecranes is a global leader in material handling solutions, serving a broad range of customers across multiple industries. We consistently set the industry benchmark in safety, productivity and sustainability. That's why Konecranes is trusted every day to lift, handle and move what the world needs.





[kclifttrucks.com](http://kclifttrucks.com)

**KONECRANES®**