



S a n y M a r i n e

REACH STACKER



QUALITY CHANGES THE WORLD

钟灏(zhongh25) 2025-03-07



▶ Contents

Reach Stacker

01

INTRODUCTION

About Sany Marine	04
Production R&D System	06
Reliable Service	07

02

REACH STACKER

Electric Reach Stacker	10
SRSC45E3	12
SRSC45E5	14
SRSC45E6	16
SRSC45E2A	18
SRSC45E3A	20
Electric Products Market Coverage	22
Fuel Reach Stacker	24
SRSC45V	26
SRSC45V2	28
SRSC45V3	30
SRSC45V4	32
SRSC45V5	34
SRSC45V6	36
SRSC45G5	37
SRSC45H9G5	38
Series Load Diagram	42
Sany Spreader	44
Accessory List	46
Accessory Details	47
Construction Cases	48

About Sany Marine

Established in 2005, SANY Marine specializes in port and logistics equipment, including mobile port machinery (reach stackers, empty container handlers), port cranes (STS, RTG, RMG, jib cranes, MHC, ship unloaders, ship loaders), logistics equipment (material handlers, heavy-duty forklift trucks, electric terminal tractors), and telehandlers.

The Zhuhai Industrial Park of SANY Marine spans 2 million square meters, with 300,000 square meters for manufacturing facilities and another 300,000 square meters for large port machinery assembly. The park has an annual production capacity valued at \$2.1 billion.

COMPANY VISION

Become a leader in logistics equipment driven by globalization, digitization and efficient operation.



QUALITY CHANGES THE WORLD

Production R&D System



Leading-edge Manufacturing Systems

SANY Marine, a leader in the field, has established an intelligent "Lighthouse Factory," integrating real-time data, centralized control, and flexible production islands. With six production lines, 18 islands, and 100 robots, the fully digitalized process spans material handling to assembly. This has led to a 30% increase in efficiency and a 30% reduction in lead times, enabling the production of one reach stack06er every six hours. Annual output now totals 15 billion RMB, with large port machinery contributing 5 billion RMB and small port equipment 10 billion RMB.



Leading R&D and Testing Capabilities

Leveraging global resources, SANY Marine has built a top R&D team of 500, with 50% holding master's degrees or higher. The company invests 6% of annual revenue in R&D, resulting in 736 patents, including 438 inventions, 29 international patents, and contributions to 23 industry standards.



Environmental Protection

Equipped with an eco-friendly engine that complies with the latest National IV standards and uses environmentally friendly paint to effectively reduce pollution. A full range of new energy products have achieved large-scale mass production and delivery.

Reliable Service

Reliable Service



Service Concept

- reply in 15 minutes
- arrive in 2 hours
- general fault solved in 1 day
- customer complaints resolved in 2 days
- general remaining problem solved in 7 days



Service Team

- 400 service engineers
- 60% obtained advanced skill level or above
- 300+ service vehicles
- 365 days*24h service



Service Outlets

- overseas office around globally
- 35 domestic service outlets
- service engineer standby in major cities

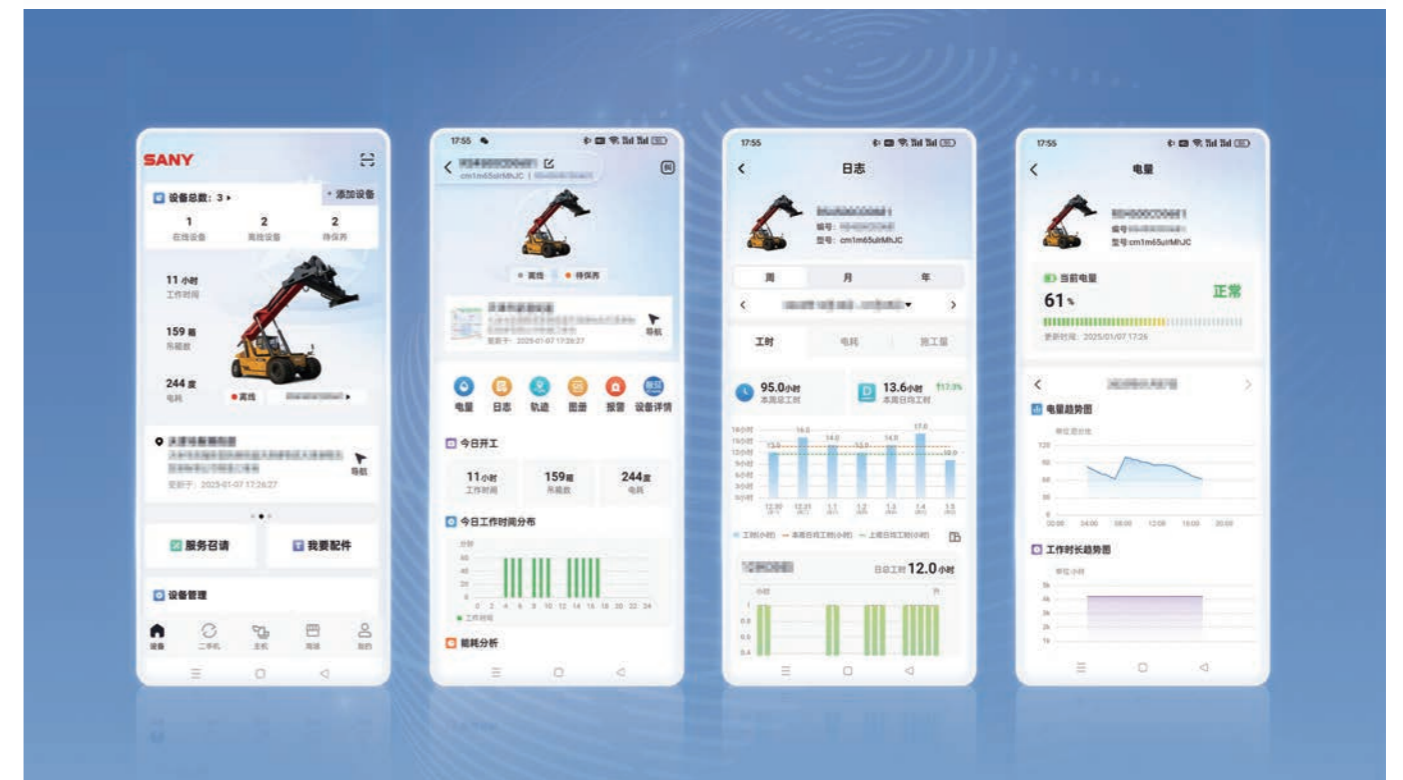


Accessory Storage

The four-in-one parts supply guarantee system of headquarters warehouse, regional central warehouse, provincial warehouse and municipal warehouse stores more than 100,000 kinds of spare parts

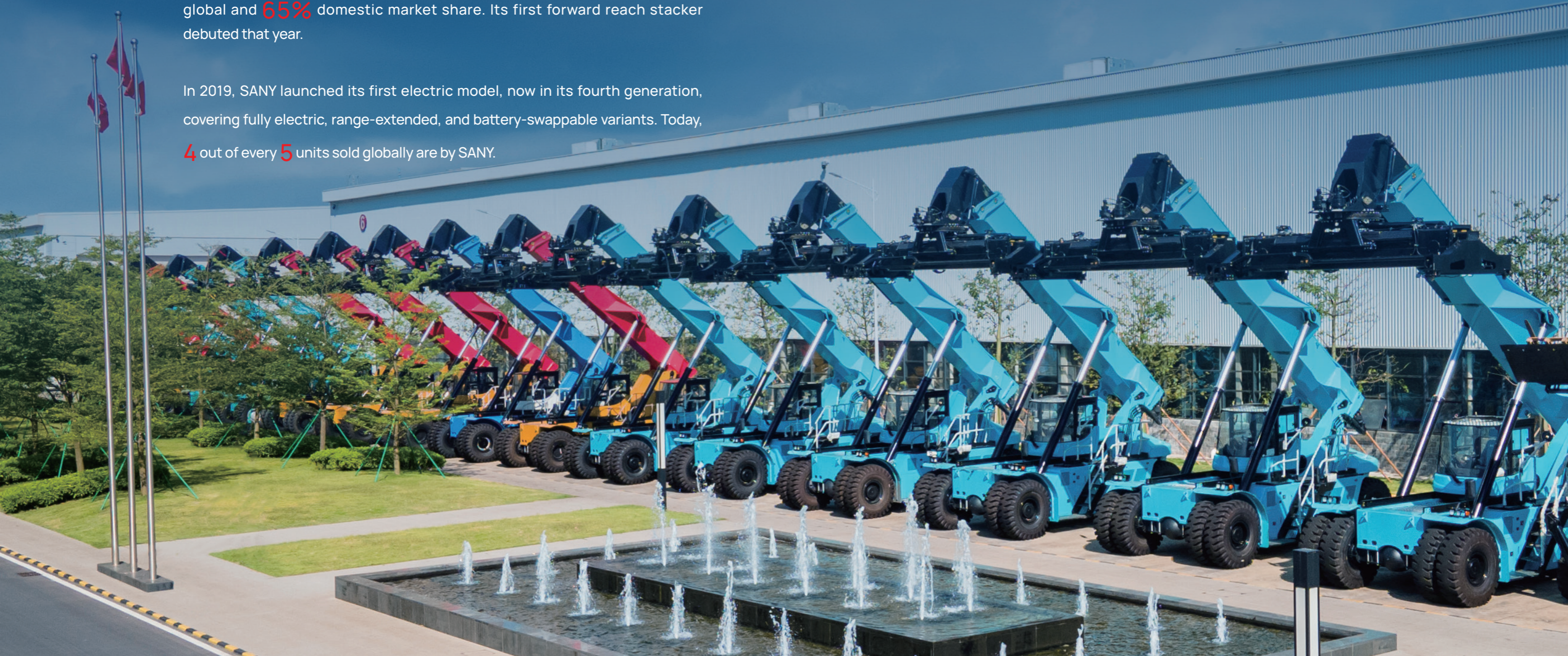
MYSANY

"MYSANY" allows global real-time monitoring of equipment status and reports, along with services like online support, community interaction, parts marketplace, repair requests, maintenance scheduling, and product knowledge.



▶ Since 2005, SANY Marine has expanded to over **70** countries, holding a **35%** global and **65%** domestic market share. Its first forward reach stacker debuted that year.

In 2019, SANY launched its first electric model, now in its fourth generation, covering fully electric, range-extended, and battery-swappable variants. Today, **4** out of every **5** units sold globally are by SANY.



According to the different working objects, the reach stacker can be divided into: **container reach stacker, log reach stacker, tower barrel reach stacker, bulk material reach stacker, etc.**, mainly used in ports, docks, railways, stack yards, wind power, highway transfer stations, energy storage and so on.



Electric Reach Stacker



Low Energy Consumption

- New high-pressure system reduces pressure loss by 60%;
- Energy recovery system recovers 4 kWh per hour;
- Ultra-high-pressure hydraulics cut energy loss by 60%.



High Efficiency

- Industry-first electric forward reach stacker with plunger cylinder boosts heavy load speed by 20%+ and allows speed adjustment;
- Fully electric-controlled boom hydraulics enhance efficiency and control;
- Multi-valve spreader control system for smoother handling.



Superior Stability

- Reliable operation in temperatures as low as -30°C.



-30° low temperatures



Next-Generation Cab

- Curved windows with dual wipers improve visibility by 15%;
- Ergonomic armrest, floating seat, and air circulation for added comfort;
- Third-gen intelligent screen with smart features like one-click start and seat lock, plus entertainment options for a better user experience.



SRSC45E3

SANY Electric Reach Stacker



- ▶ **1 Long endurance**
 - large capacity battery ensures 10+ hours endurance;
 - potential energy recovery technology;
 - optimized hydraulic system, electric motor direct drive.
- ▶ **3 Fast charging**
 - Double charger: The product retains the dual gun charging port, which meets the national standard: GBT 202341-2015. Through the market verification, technology is mature and reliable. Dual gun charging can realize high power fast charging. Convenient deployment of equipment for customers.

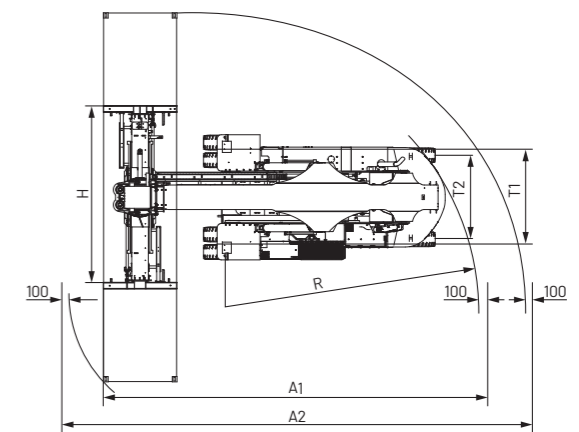
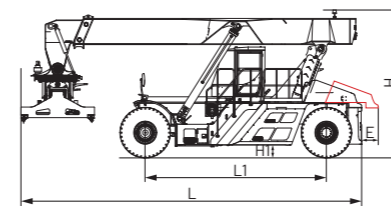
- ▶ **2 High efficiency**
 - Control precisely : The electric motor drives the electric control pump system, the motion flow can be accurately distributed, control is more precise.
 - Linkage is excellent : Boom stretch and pitching, move and travel of spreader driven by different motors, linkage effect is excellent.
 - Comfortable driving : The driving is directly driven by dual motors, with fast acceleration response, stepless speed regulation, no shift shock, and easy operation.
- ▶ **4 lower cost**
 - with range extender on and in hybrid mode
 - Save 250,000 RMB in the 1st year
 - Save 1.25 million RMB within 5 years.

▶ Product Parameters

Technical Parameter		
ITEM	UNIT	SRSC45E3
Max. Lifting speed (0/full load)	mm/s	420/250
Max. Lowering speed (0/full load)	mm/s	360/300
Max. Traveling speed (0/full load)	km/h	20/14
Gradeability (0/full load)	%	21/14
Hydraulic system working pressure	bar	340
Overall weight	t	73
Rated load	t	45
Stack layer	-	5
Max. Lift height standard	mm	15100
Max. Boom elevation	deg	0-60
Overall length L	mm	11320
Wheel base L1	mm	6000
Overall height H (retract/extend)	mm	4850
Min. Ground clearance H1	mm	330
Overall width W	mm	6053-12185
Counterweight sideways E	mm	-
Front gauge T1	mm	3033
Rear gauge T2	mm	2790
Min. Turning radius R	mm	8000
Aisle width for 20'container A1	mm	11300
Aisle width for 40'container A2	mm	13600

Configuration Parameter			
CONFIGURATION	UNIT	SRSC45E3	
Energy type	-	Fully electric	
Charging/swapping time	min	90/6	
Endurance time	h	6/8	
Quantity of electricity	kWh	422/507	
Traction battery	Battery type	-	Lithium iron phosphate battery pack
	Standard voltage	V	618
	Thermal management	-	Heating: heating film Cooling: water cooling
Electric motor	Type	-	PMSM
	Output torque (Rated/peak)	Nm/rpm	2040(rated) 3860(peak)
	Output power (Rated/peak)	kW	171(rated) 310(peak)
	Output rotate speed (Rated/peak)	RPM	800(rated) 2800(peak)
	Cooling type	-	Water cooling
Transmission type	-	SANY DWF-510/Kessler D102	

▶ Dimensions



SRSC45E5

SANY Electric Reach Stacker

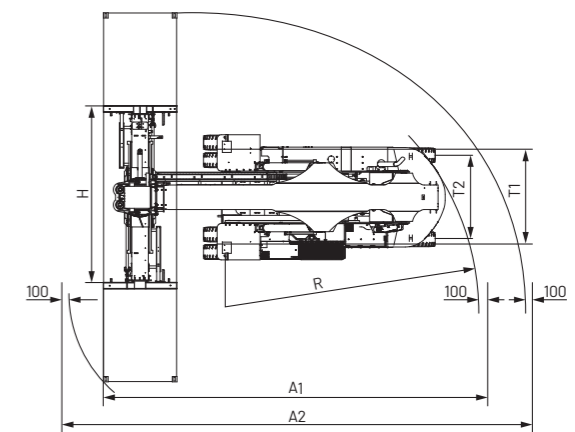
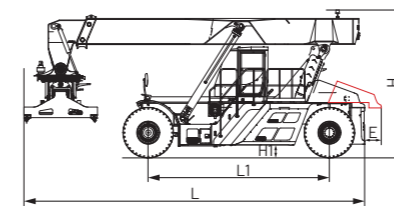


Product Parameters

Technical Parameter		
ITEM	UNIT	SRSC45E5
Max. Lifting speed (0/full load)	mm/s	420/250
Max. Lowering speed (0/full load)	mm/s	360/300
Max. Traveling speed (0/full load)	km/h	20/14
Gradeability (0/full load)	%	21/14
Hydraulic system working pressure	bar	340
Overall weight	t	73
Rated load	t	45
Stack layer	-	5
Max. Lift height standard	mm	15100
Max. Boom elevation	deg	0-60
Overall length L	mm	11320
Wheel base L1	mm	6000
Overall height H (retract/extend)	mm	4850
Min. Ground clearance H1	mm	330
Overall width W	mm	6053-12185
Counterweight sideways E	mm	-
Front gauge T1	mm	3033
Rear gauge T2	mm	2790
Min. Turning radius R	mm	8000
Aisle width for 20'container A1	mm	11300
Aisle width for 40'container A2	mm	13600

Configuration Parameter			
CONFIGURATION	UNIT	SRSC45E5	
Energy type	-	Electric	
Charging time	min	90	
Endurance time	h	6/8	
Quantity of electricity	kWh	422/507	
Traction battery	Battery type	-	Lithium iron phosphate battery pack
	Standard voltage	V	618
	Thermal management	-	Heating: heating film Cooling: water cooling
Electric motor	Type	-	Pmsm
	Output torque (Rated/peak)	Nm/rpm	1500(Rated) 4200(peak)
	Output power (Rated/peak)	kW	157(Rated) 310(peak)
	Output rotate speed (Rated/peak)	RPM	1000(Rated) 2800(peak)
	Cooling type	-	Water cooling
Transmission type	-	Kessler d102	

Dimensions



1 Higher safety standards

- Products obtained EU CE certification
- With high voltage interlock function, real-time monitoring of high voltage circuit is complete. Prevent faults that are believed to be caused by improper operations.

2 EMC Certification

- The high-voltage and low-voltage wiring harnesses are arranged in layers to reduce the interference of high-voltage signals, and the equipment runs more reliably. The product has passed EMC certification.

3 Optional charging port

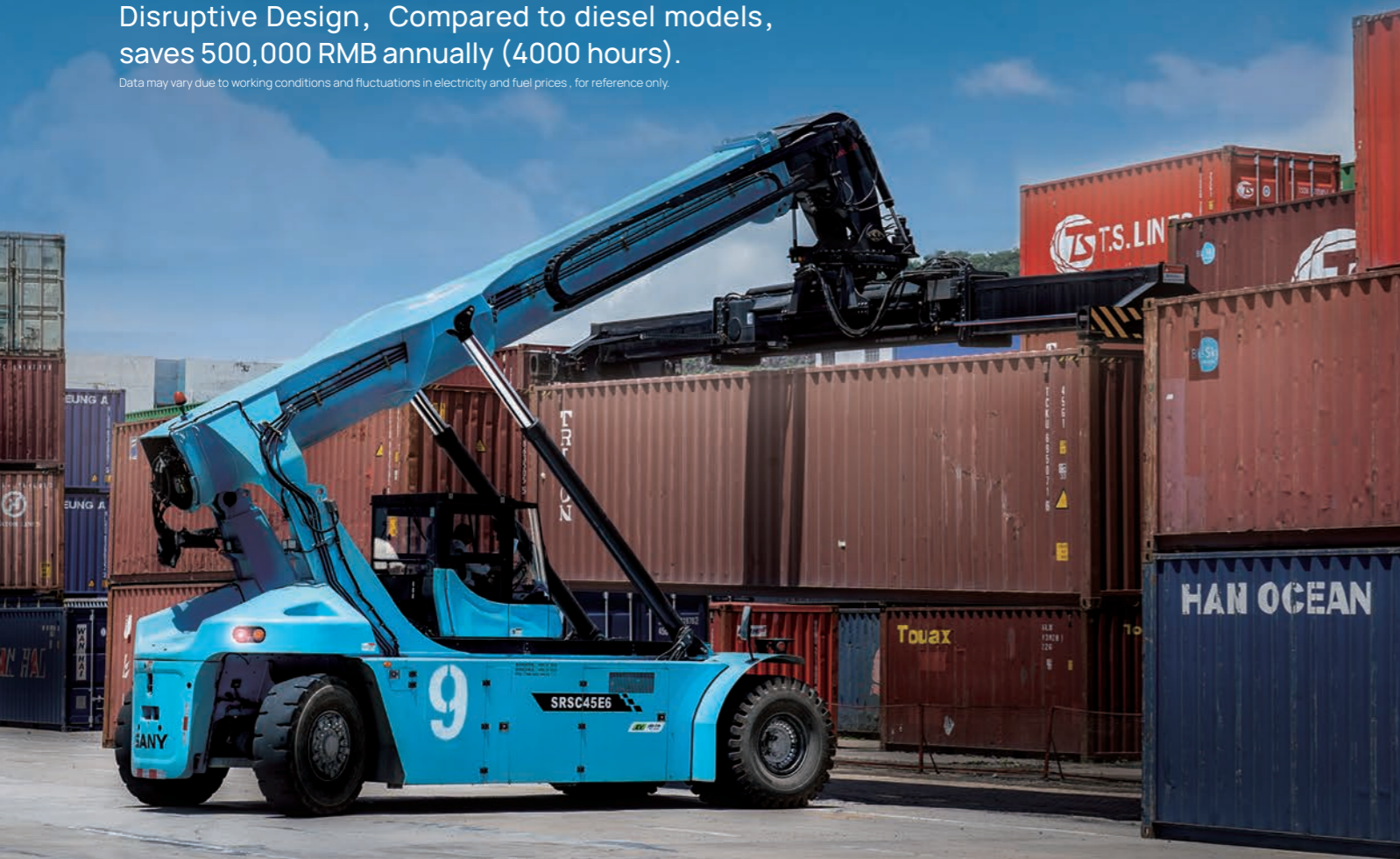
- Optional CCS1 and CCS2 charging port to meet the needs of users in different regions.

SRSC45E6

SANY Electric Reach Stacker

Disruptive Design, Compared to diesel models, saves 500,000 RMB annually (4000 hours).

Data may vary due to working conditions and fluctuations in electricity and fuel prices, for reference only.



1 Low Energy Consumption, Cost Savings

- Ultra-high-pressure hydraulics reduce energy loss by 60%, cutting operational energy use by 30%;
- Braking regeneration system extends battery life by 10%;
- 30% lower energy consumption vs. similar models, saving over 80,000 RMB annually (4000 hours).

2 Stable and Energy-Efficient Design

- U-shaped boom optimizes load distribution, extending service life;
- Lightest single-cylinder spreader, reducing energy consumption by 16% and tire wear;
- Reversible counterweight improves stability with a 1m rearward shift.

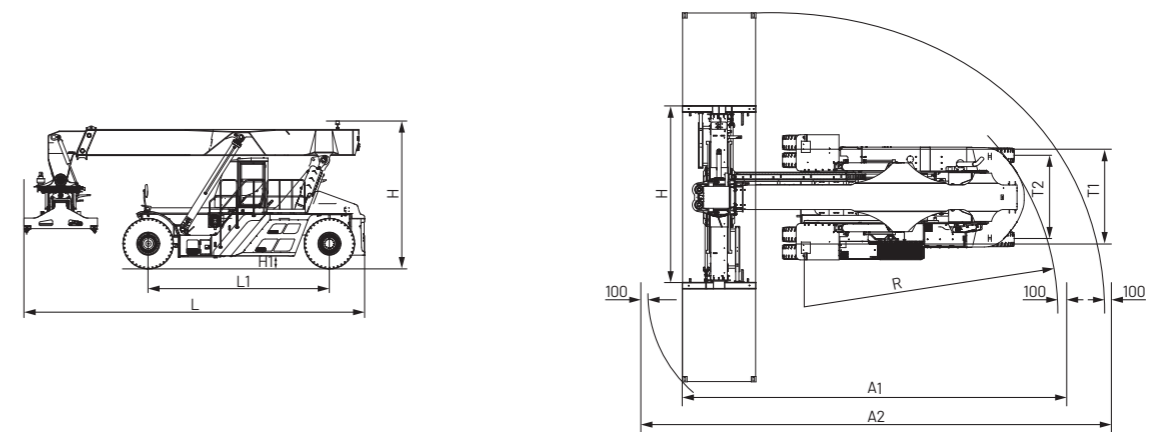
3 New-Generation Cab, Comfort & Efficiency

- Curved windows and dual wipers enhance 60%, cutting visibility by 15%;
- Ergonomic armrest, floating seat, and air circulation improve comfort;
- Intelligent central control screen with one-click start, power-locking, seat lock, and entertainment features for a better work experience.

Product Parameters

Technical Parameter			Configuration Parameter			
ITEM	UNIT	SRSC45E6	CONFIGURATION	UNIT	SRSC45E6	
Weight	t	67	Energy Type	-	Electric	
Dimensions (L × W × H)	mm	11288×6053×4965	Charging Time (min)	min	90/110	
Rated Lifting Capacity	t	45	Range (h)	h	8/10	
Max Lifting Height / Stacking Layers	mm	15100/5th floor	Battery Capacity (kWh)	kWh	422/507	
Max Boom Angle	deg	60	Power Battery	Battery Type	-	Lithium Iron Phosphate Battery Pack
Max Lifting Speed (unloaded/loaded)	mm/s	420/250		Nominal Voltage	V	618
Max Lowering Speed (unloaded/loaded)	mm/s	360/300	Thermal Management	Thermal Management	-	Heating: Heating Film Cooling: Liquid Cooling
Climbing Ability (unloaded/loaded)	-	21/14		Type	-	Pmsm
Hydraulic System Operating Pressure	bar	380	Electric motor	Output torque (Rated/peak)	Nm/rpm	1500(Rated) 4200(peak)
Max Travel Speed	km/h	20		Output power (Rated/peak)	kW	157(Rated) 310(peak)
Minimum Ground Clearance	mm	330		Output rotate speed (Rated/peak)	RPM	1000(Rated) 2800(peak)
Counterweight Reversal Angle	deg	42		Cooling type	-	Water cooling
Minimum Turning Radius	mm	8000	Transmission type	-	Sany DWF-50/101.287	
20' Container Passage Width (A1)	mm	11300				
40' Container Passage Width (A2)	mm	13600				

Dimensions



SRSC45E2A

SANY Electric Reach Stacker

New-Generation E2A Range-Extended Reach Stacker,
Fuel consumption: 13L/h; Electric mode: 50kWh/h.

Data may vary due to working conditions and fluctuations in electricity and fuel prices. For reference only.



1 New Range-Extended Power System

- New engine with 4.03 kW.h/L power generation efficiency;
- EGR+DOC+DPF exhaust system reduces operating costs by 4% (no urea required).

2 Zero Range Anxiety

- 75 kW max power from range-extender;
- 5% energy consumption reduction over previous generation;
- 13L/h fuel consumption, 30% lower than traditional models.

3 Intelligent Thermal Management

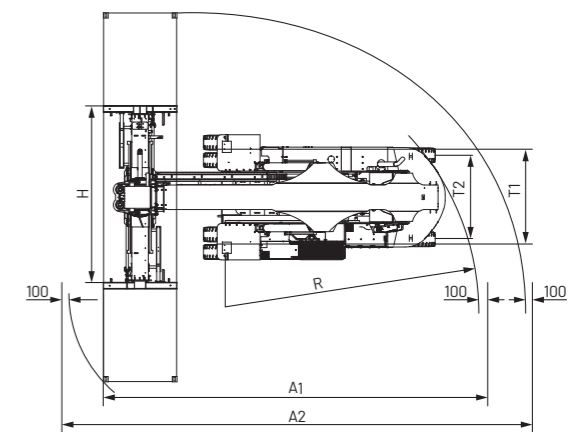
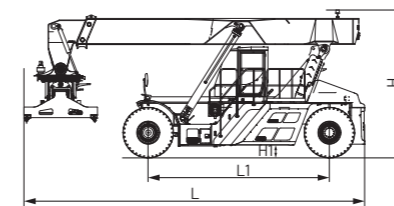
- Electric-controlled cooling system optimizes efficiency and reduces energy loss.

Product Parameters

Technical Parameter		
ITEM	UNIT	SRSC45E2A (Range-Extended)
Max. Lifting speed (0/full load)	mm/s	420/250
Max. Lowering speed (0/full load)	mm/s	360/300
Max. Traveling speed (0/full load)	km/h	20/14
Gradeability (0/full load)	%	21/14
Hydraulic system working pressure	bar	350
Overall weight	t	71
Rated load	t	45
Stack layer	-	5
Max. Lift height standard	mm	15100
Max. Boom elevation	deg	0-60
Overall length L	mm	11320
Wheel base L1	mm	6000
Overall height H (retract/extend)	mm	4850
Min. Ground clearance H1	mm	330
Overall width W	mm	6053-12185
Front gauge T1	mm	3033
Rear gauge T2	mm	2790
Min. Turning radius R	mm	8000
Aisle width for 20'container A1	mm	11300
Aisle width for 40'container A2	mm	13600

Configuration Parameter		
CONFIGURATION	UNIT	SRSC45E2A
Energy Type	-	Range-Extended
Battery Capacity (kWh)	kWh	282
Battery Type	-	Lithium Iron Phosphate Battery Pack
Nominal Voltage	V	618
Thermal Management	-	Heating: Heating Film Cooling: Liquid Cooling
Type	-	Pmsm
Output torque (Rated/peak)	Nm/rpm	2040 (Rated) 3860 (peak)
Output power (Rated/peak)	kW	171 (Rated) 310 (peak)
Output rotate speed (Rated/peak)	RPM	800 (Rated) 2800 (peak)
Cooling type	-	Water cooling
Transmission type	-	Sany DWF-50/101.287
FISG Motor Power	kW	75
Cooling Method	-	Water cooling
Engine Power	kW	92
Emission Standard	-	National IV

Dimensions



SRSC45E3A

SANY Electric Reach Stacker



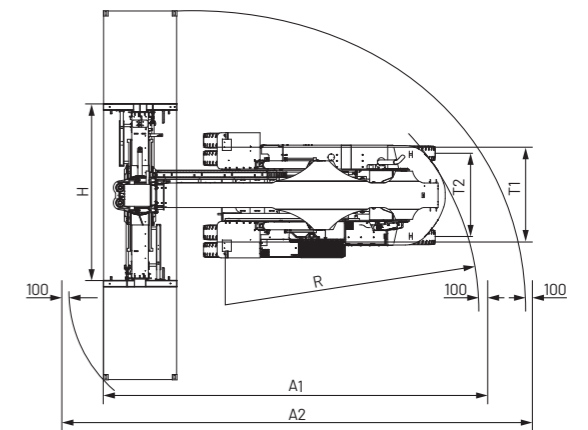
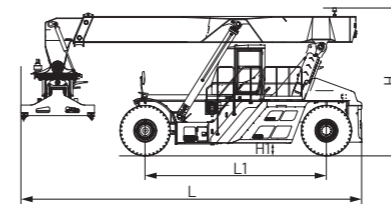
- ▶ 1 Equipped with an external battery swap system, enabling quick 10-minute swaps for fast recharging and easy maintenance.
- ▶ 2 Eliminates engine and gearbox maintenance, saving up to 56,000 RMB annually in service costs.
- ▶ 3 Integrated with an intelligent customer cloud for real-time data display, rapid fault diagnostics, automatic report generation, and smart charging scheduling.
- ▶ 4 Supports both standard charging and battery swapping modes for flexible energy replenishment.

▶ Product Parameters

Technical Parameter		
ITEM	UNIT	SRSC45E3A(Electric)
Max. Lifting speed (0/full load)	mm/s	420/250
Max. Lowering speed (0/full load)	mm/s	360/300
Max. Traveling speed (0/full load)	km/h	20/14
Gradeability (0/full load)	%	21/14
Hydraulic system working pressure	bar	350
Overall weight	t	72
Rated load	t	45
Stack layer	-	5
Max. Lift height standard	mm	15100
Max. Boom elevation	deg	0-60
Overall length L	mm	11320
Wheel base L1	mm	6000
Overall height H (retract/extend)	mm	4850
Min. Ground clearance H1	mm	330
Overall width W	mm	6053-12185
Front gauge T1	mm	3033
Rear gauge T2	mm	2790
Min. Turning radius R	mm	8000
Aisle width for 20'container A1	mm	11300
Aisle width for 40'container A2	mm	13600

Configuration Parameter		
CONFIGURATION	UNIT	SRSC45E3A
Energy type	-	Electric
Charging time	min	10
Endurance time	h	6
Quantity of electricity	kWh	282
Traction battery	Battery type	-
	Standard voltage	V
	Thermal management	-
Electric motor	Type	-
	Output power (Rated/peak)	kW
	Output rotate speed (Rated/peak)	RPM
	Cooling type	-
Transmission type	-	Sany DWF-50/101.287

▶ Dimensions



▶ SANY Electric Product Coverage



▶ SANY's electric reach stackers, electric empty container handlers, electric heavy-duty forklifts, and electric terminal tractors are in use across **29** provinces in China. Over **1,500** units have been delivered to major global port operators like **PSA, APMT, Hutchison, and DPW**, leading the market share both domestically and internationally.

Quality Changes
the World

钟灏(zhongh25) 2025-03-07

► Fuel Reach Stacker



Reliable structure

- After decades of structural optimization and iterative upgrading of key components, the reliability life can reach more than 30,000 hours to ensure the stability and reliability of the whole machine structure.



Safe protection system

- Dynamic anti-tipping protection system, 360 intelligent man-machine safety system, pipe network automatic fire extinguishing system, spreader anti-collision system, real-time monitoring operation status, escort for safe operation.



Super power performance

- Three major power components selected from international well-known brands, reliable quality, strong power, customized development, ensure power performance to achieve the best;
- Multiple protection of engine and transmission, scientific protection of engine start and stop, operation and transmission shift to extend its service life.



Lower operating consumption

- A new generation of hydraulic system, to achieve the perfect combination of load and power, more energy saving;
- Dynamic power matching control system, automatically identifies dynamic power according to load changes, adjusts engine speed, and ADAPTS output power to load conditions changes, effectively reducing energy consumption;
- Patented energy recovery technology, boom potential energy recovery, gravity retraction patented technology, energy saving 20%.



Humanized operating system

- Patented hydraulically controlled mobile cab, with a full field of vision;
- Control response < 400ms, lifting action proportional control, the whole machine multi-action linkage design, equipped with a 10-inch touch screen, easier operation;
- Ergonomic suspension cushioning seat, anti-fog, defrost and ventilation function of constant temperature air conditioning, more comfortable driving.



Intelligent operating system

- Container matched in 10 seconds by one-button, comprehensive operation efficiency increased by 10%;
- Container number identification system, in place of the traditional manual input mode, AI algorithm automated identification and print, accurate and efficient;
- Automatic centering by one button, machine learning + motion control technology, greatly improve efficiency.

SRSC45V

SANY Fuel Reach Stacker



- ▶ **1** **Energy-saving**
fuel consumption reduced 15%
longer life filter, lower maintenance cost
energy-saving LED light
- ▶ **3** **Reliable**
20 years of research and development of
technology
30,000 hours structural parts fatigue test

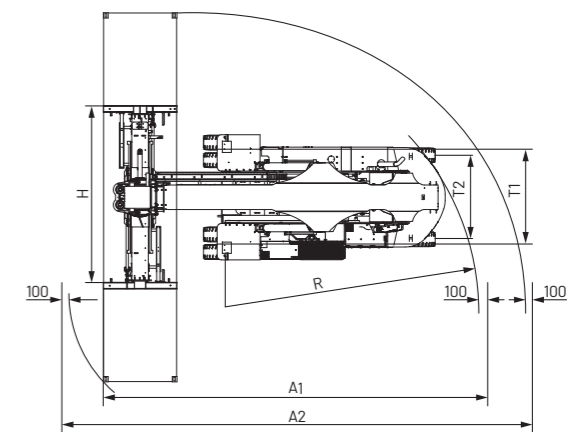
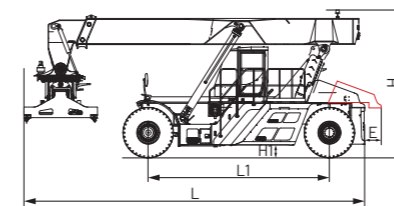
- ▶ **2** **Efficient**
comprehensive operation efficiency
increased by 10%
full proportion control, better operation
performance

▶ Product Parameters

Technical Parameter		
ITEM	UNIT	SRSC45V
Max. Lifting speed (0/full load)	mm/s	420/250
Max. Lowering speed (0/full load)	mm/s	360/300
Max. Traveling speed (0/full load)	km/h	25/21
Gradeability (0/full load)	%	39/24
Hydraulic system working pressure	bar	260
Overall weight	t	71
Rated load	t	45
Stack layer	—	5
Max. Lift height standard	mm	15100
Max. Boom elevation	deg	0-60
Overall length L	mm	11320
Wheel base L1	mm	6042
Overall height H (retract/extend)	mm	4770
Min. Ground clearance H1	mm	350
Overall width W	mm	6053-12185
Counterweight sideways E	mm	—
Front gauge T1	mm	3033
Rear gauge T2	mm	2790
Min. Turning radius R	mm	8000
Aisle width for 20'container A1	mm	11300
Aisle width for 40'container A2	mm	13600

Configuration Parameter		
CONFIGURATION	UNIT	SRSC45V
Engine	Type	-
	Rated capacity	Kw/rpm
	Max torque	Nm/rpm
	Emission standard	-
Transmission type	-	
Drive axle type	-	
Main pump	-	
Spreader	Model	-
	Lateral move	mm
	Rotate angle	deg
	Tilt angle	deg
	Self-weight	t
Suitable fo	-	
Tires	-	

▶ Dimensions



SRSC45V2

SANY Fuel Reach Stacker



1 Large engine displacement, sufficient power reserve

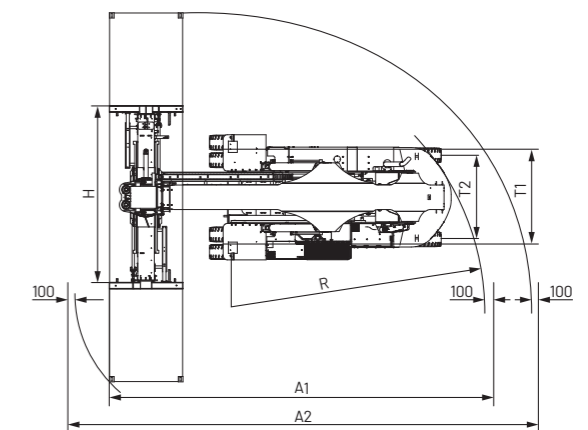
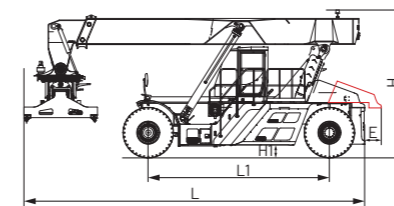
2 Equipped with proportional micro-motion technology, full proportional control of container matching

Product Parameters

Technical Parameter		
ITEM	UNIT	SRSC45V2
Max. Lifting speed (0/full load)	mm/s	420/250
Max. Lowering speed (0/full load)	mm/s	360/300
Max. Traveling speed (0/full load)	km/h	25/21
Gradeability (0/full load)	%	39/24
Hydraulic system working pressure	bar	260
Overall weight	t	71
Rated load	t	45
Stack layer	—	5
Max. Lift height standard	mm	15100
Max. Boom elevation	deg	0-60
Overall length L	mm	11320
Wheel base L1	mm	6042
Overall height H (retract/extend)	mm	4770
Min. Ground clearance H1	mm	350
Overall width W	mm	6053-12185
Counterweight sideways E	mm	—
Front gauge T1	mm	3033
Rear gauge T2	mm	2790
Min. Turning radius R	mm	8000
Aisle width for 20'container A1	mm	11300
Aisle width for 40'container A2	mm	13600

Configuration Parameter		
CONFIGURATION	UNIT	SRSC45V2
Engine	Type	- DEUTZ
	Rated capacity	Kw/rpm 277/2100
	Max torque	Nm/rpm 1898/1200~1600
	Emission standard	- Stage III
Transmission type	-	ZF
Drive axle type	-	XWF-510
Main pump	-	Parker
Spreader	Model	- SDJ450H-R1
	Lateral move	mm ±800
	Rotate angle	deg 105/-195
	Tilt angle	deg ±5
	Self-weight	t 71
Suitable fo	-	ISO20'/40'/45'container
Tires	-	18.00-25

Dimensions



SRSC45V3

SANY Fuel Reach Stacker



- ▶ 1 fuel consumption reduced 15%
longer life filter, lower maintenance cost
energy-saving LED light
- ▶ 3 Equipped with proportional micro-motion
technology, full proportional control of
container matching

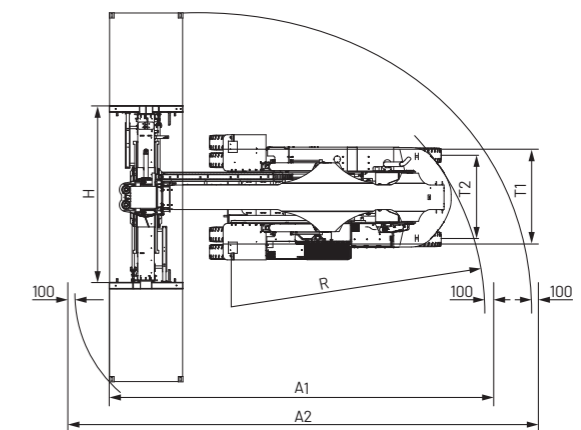
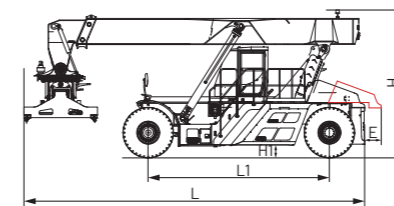
- ▶ 2 Deutz D12 engine, more powerful, power
increase by 6%

▶ Product Parameters

Technical Parameter		
ITEM	UNIT	SRSC45V3
Max. Lifting speed (0/full load)	mm/s	420/250
Max. Lowering speed (0/full load)	mm/s	360/300
Max. Traveling speed (0/full load)	km/h	25/21
Gradeability (0/full load)	%	39/32
Hydraulic system working pressure	bar	260
Overall weight	t	71
Rated load	t	45
Stack layer	-	5
Max. Lift height standard	mm	15100
Max. Boom elevation	deg	0-60
Overall length L	mm	11320
Wheel base L1	mm	6042
Overall height H (retract/extend)	mm	4770
Min. Ground clearance H1	mm	350
Overall width W	mm	6053-12185
Counterweight sideways E	mm	-
Front gauge T1	mm	3033
Rear gauge T2	mm	2790
Min. Turning radius R	mm	8000
Aisle width for 20'container A1	mm	11300
Aisle width for 40'container A2	mm	13600

Configuration Parameter		
CONFIGURATION	UNIT	SRSC45V3
Engine	Type	-
	Rated capacity	Kw/rpm
	Max torque	Nm/rpm
	Emission standard	-
Transmission type	-	ZF
Drive axle type	-	XWF-510
Main pump	-	Parker
Spreader	Model	-
	Lateral move	mm
	Rotate angle	deg
	Tilt angle	deg
	Self-weight	t
Suitable fo	-	ISO20'/40'/45'container
Tires	-	18.00-25

▶ Dimensions



SRSC45V4

SANY Fuel Reach Stacker



1 Cummins QSL9 engine, meet the US T4F emissions.

2 Equipped with WPT and PPS functional spreader to meet various working scenarios.

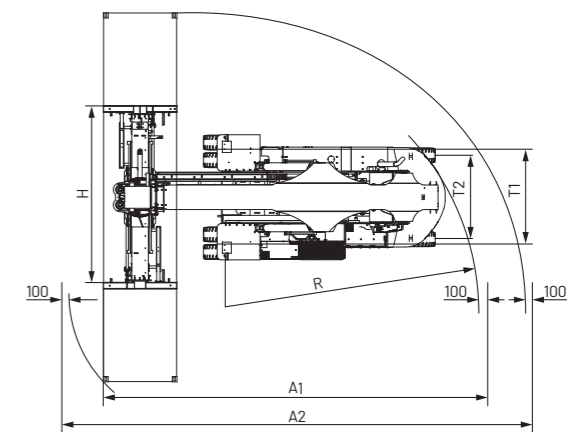
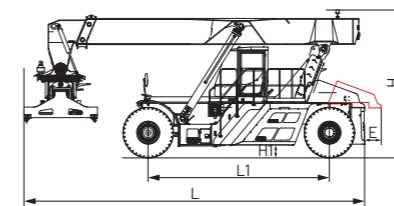
3 DANA TE32 transmission, fully electronically controlled proportional shift without impact, more comfortable

Product Parameters

Technical Parameter		
ITEM	UNIT	SRSC45V4
Max. Lifting speed (0/full load)	mm/s	480/250
Max. Lowering speed (0/full load)	mm/s	360/300
Max. Traveling speed (0/full load)	km/h	25/21
Gradeability (0/full load)	%	39/32
Hydraulic system working pressure	bar	260
Overall weight	t	72
Rated load	t	45
Stack layer	-	5
Max. Lift height standard	mm	15100
Max. Boom elevation	deg	0-60
Overall length L	mm	11340
Wheel base L1	mm	6053
Overall height H (retract/extend)	mm	4770
Min. Ground clearance H1	mm	350
Overall width W	mm	6053-12185
Counterweight sideways E	mm	-
Front gauge T1	mm	3033
Rear gauge T2	mm	2790
Min. Turning radius R	mm	8000
Aisle width for 20'container A1	mm	11300
Aisle width for 40'container A2	mm	13600

Configuration Parameter		
CONFIGURATION	UNIT	SRSC45V4
Engine	Type	-
	Rated capacity	kW/rpm
	Max torque	Nm/rpm
	Emission standard	-
Transmission type	-	
Drive axle type	-	
Main pump	-	
Spreader	Model	-
	Lateral move	mm
	Rotate angle	deg
	Tilt angle	deg
	Self-weight	t
	Suitable fo	-
Tires	-	

Dimensions



SRSC45V5

SANY Fuel Reach Stacker



- ▶ **1** National standard IV emission, VOLVO TAD1181VE engine, electrically controlled high pressure common rail, fuel consumption is 2.8% lower than before.
- ▶ **3** new control system: overall responsiveness, micromobility, linkage, and stability are improved.

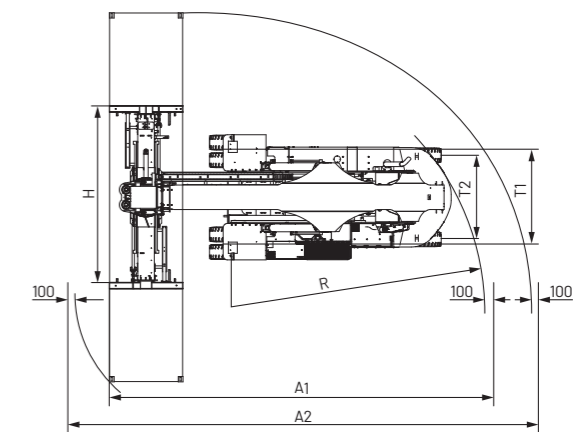
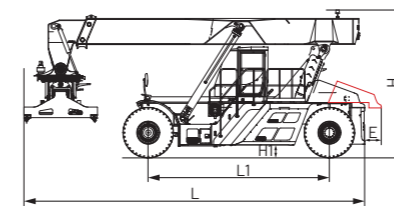
- ▶ **2** TE30 transmission technology: proportional valve automatic shift; full load gradeability increased from 26% to 28%.
- ▶ **4** equipped with container positioning micro-mobility technology, operation of container positioning achieves full proportional control.

▶ Product Parameters

Technical Parameter		
ITEM	UNIT	SRSC45V5
Max. Lifting speed (0/full load)	mm/s	420/250
Max. Lowering speed (0/full load)	mm/s	360/300
Max. Traveling speed (0/full load)	km/h	25/21
Gradeability (0/full load)	%	39/32
Hydraulic system working pressure	bar	260
Overall weight	t	71
Rated load	t	45
Stack layer	—	5
Max. Lift height standard	mm	15100
Max. Boom elevation	deg	0-60
Overall length L	mm	11320
Wheel base L1	mm	6000
Overall height H (retract/extend)	mm	4850
Min. Ground clearance H1	mm	330
Overall width W	mm	6053-12185
Counterweight sideways E	mm	-
Front gauge T1	mm	3033
Rear gauge T2	mm	2790
Min. Turning radius R	mm	8000
Aisle width for 20'container A1	mm	11300
Aisle width for 40'container A2	mm	13600

Configuration Parameter		
CONFIGURATION	UNIT	SRSC45V5
Engine	Type	-
	Rated capacity	Kw/rpm
	Max torque	Nm/rpm
	Emission standard	-
Transmission type	-	
Drive axle type	-	
Main pump	-	
Spreader	Model	-
	Lateral move	mm
	Rotate angle	deg
	Tilt angle	deg
	Self-weight	t
Suitable fo	-	
Tires	-	

▶ Dimensions



SRSC45V6

SANY Fuel Reach Stacker



1

CN-4 emission standard, featuring an international top-tier engine, designed by Austria's AVL and developed with Bosch. High torque in the low-to-medium speed range continuous output and strong power. Fuel injection pressure up to 1800 bar with fuel consumption 190g/kWh.

2

SANY axles are integrally cast, 20% larger than welded axle housings, offering 20% higher load-bearing capacity and smoother structural transitions.

3

New control system: Enhanced responsiveness, fine-tuning, interactivity and stability.

4

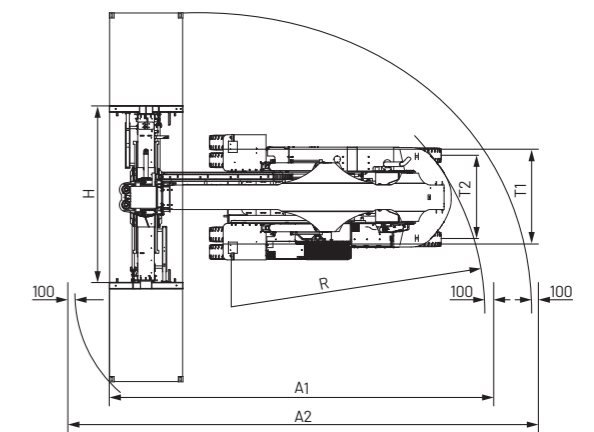
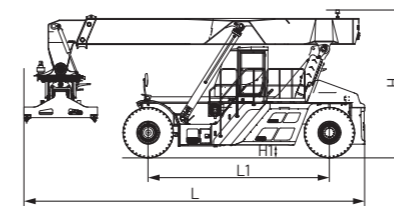
Equipped with full-proportional gearbox control for precise operation.

Product Parameters

Technical Parameter		
ITEM	UNIT	SRSC45V6
Max. Lifting speed (0/full load)	mm/s	420/250
Max. Lowering speed (0/full load)	mm/s	360/300
Max. Traveling speed (0/full load)	km/h	25/14
Gradeability (0/full load)	%	39/24
Hydraulic system working pressure	bar	280
Overall weight	t	71
Rated load	t	45
Stack layer	-	5
Max. Lift height standard	mm	15100
Max. Boom elevation	deg	0-60
Overall length L	mm	11320
Wheel base L1	mm	6000
Overall height H (retract/extend)	mm	4850
Min. Ground clearance H1	mm	330
Overall width W	mm	6053-12185
Front gauge T1	mm	3033
Rear gauge T2	mm	2790
Min. Turning radius R	mm	8000
Aisle width for 20'container A1	mm	11300
Aisle width for 40'container A2	mm	13600

Configuration Parameter			
CONFIGURATION	UNIT	SRSC45V6	
Engine	Type	-	D13S4-380E0
	Rated capacity	kW/rpm	265/2100
	Max torque	Nm/rpm	1850/1000-1400
	Emission standard	-	CN-4
Transmission type	-	HR36000	
Drive axle type	-	XWF-510	
Main pump	-	HENGLI	
Spreader	Model	-	SDJ450H-R1
	Lateral move	mm	±800
	Rotate angle	deg	105/-195
	Tilt angle	deg	±5
	Self-weight	t	71
Suitable for	-	ISO20'/40'/45' container	
Tires	-	18.00-25	

Dimensions



SRSC45G5

SANY Fuel Reach Stacker



1 Euro stage V emissions, TAD1181VE engine, using electronically controlled high pressure common rail, fuel consumption is 3% lower than the previous generation.

2 More control, the main actions are proportional control.

3 The products meet the European CE requirements.

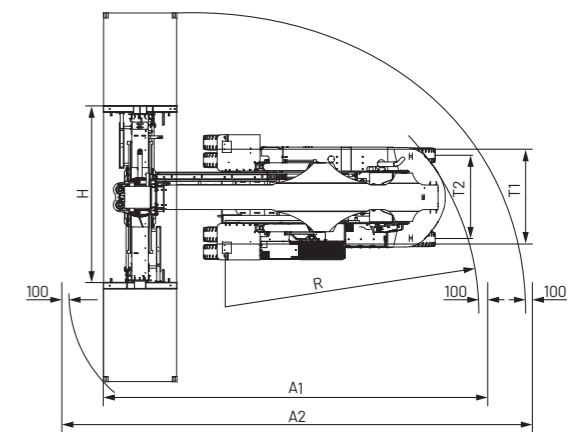
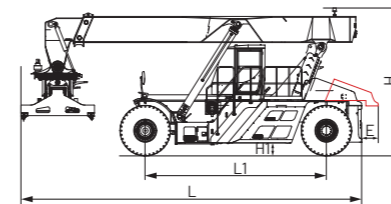
4 Standard air suspension seat for more comfortable driving.

Product Parameters

Technical Parameter		
ITEM	UNIT	SRSC45G5
Max. Lifting speed (0/full load)	mm/s	460 / 260
Max. Lowering speed (0/full load)	mm/s	600 / 400
Max. Traveling speed (0/full load)	km/h	25 / 21
Gradeability (0/full load)	%	46 / 28
Hydraulic system working pressure	bar	260
Overall weight	t	72.5
Rated load	t	45
Stack layer	-	5
Max. Lift height standard	mm	15100
Max. Boom elevation	deg	0-60
Overall length L	mm	11320
Wheel base L1	mm	6042
Overall height H (retract/extend)	mm	4770
Min. Ground clearance H1	mm	350
Overall width W	mm	6053-12185
Counterweight sideways E	mm	-
Front gauge T1	mm	3033
Rear gauge T2	mm	2790
Min. Turning radius R	mm	8000
Aisle width for 20'container A1	mm	11300
Aisle width for 40'container A2	mm	13600

Configuration Parameter		
CONFIGURATION	UNIT	SRSC45G5
Engine	Type	-
	Rated capacity	kW/rpm
	Max torque	Nm/rpm
	Emission standard	-
Transmission type	-	ZF
Drive axle type	-	Kessler D102
Main pump	-	Parker
Spreader	Model	-
	Lateral move	mm
	Rotate angle	deg
	Tilt angle	deg
	Self-weight	t
Suitable fo	-	ISO20'/40'/45' container
Tires	-	18.00-25

Dimensions



SRSC45H9G5

SANY Fuel Reach Stacker

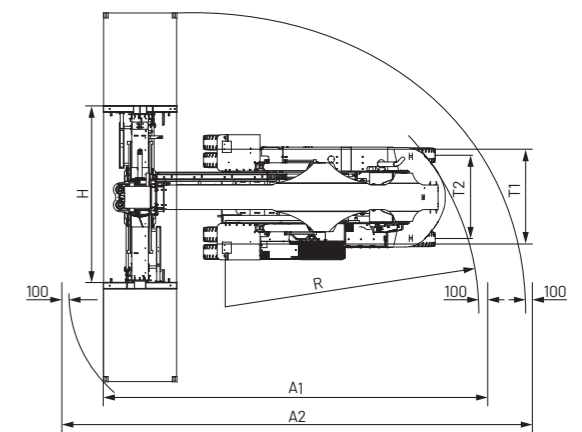
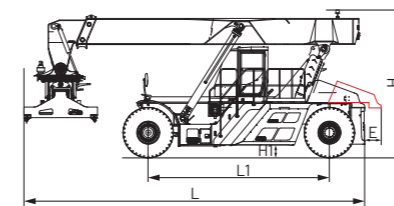


Product Parameters

Technical Parameter		
ITEM	UNIT	SRSC45H9G5
Max. Lifting speed (0/full load)	mm/s	420 / 250
Max. Lowering speed (0/full load)	mm/s	500 / 400
Max. Traveling speed (0/full load)	km/h	25 / 21
Gradeability (0/full load)	%	46 / 28
Hydraulic system working pressure	bar	260
Overall weight	t	72.5
Rated load	t	45
Stack layer	-	5
Max. Lift height standard	mm	15100
Max. Boom elevation	deg	0-60
Overall length L	mm	11320
Wheel base L1	mm	6042
Overall height H (retract/extend)	mm	4770
Min. Ground clearance H1	mm	350
Overall width W	mm	6053-12185
Counterweight sideways E	mm	-
Front gauge T1	mm	3033
Rear gauge T2	mm	2790
Min. Turning radius R	mm	8000
Aisle width for 20'container A1	mm	11300
Aisle width for 40'container A2	mm	13600

Configuration Parameter		
CONFIGURATION	UNIT	SRSC45H9G5
Engine	Type	-
	Rated capacity	kW/rpm
	Max torque	Nm/rpm
	Emission standard	-
Transmission type	-	ZF
Drive axle type	-	Kessler D102
Main pump	-	Parker
Spreader	Model	-
	Lateral move	mm
	Rotate angle	deg
	Tilt angle	deg
	Self-weight	t
Suitable fo	-	ISO20'/40'/45' container
Tires	-	18.00-25

Dimensions



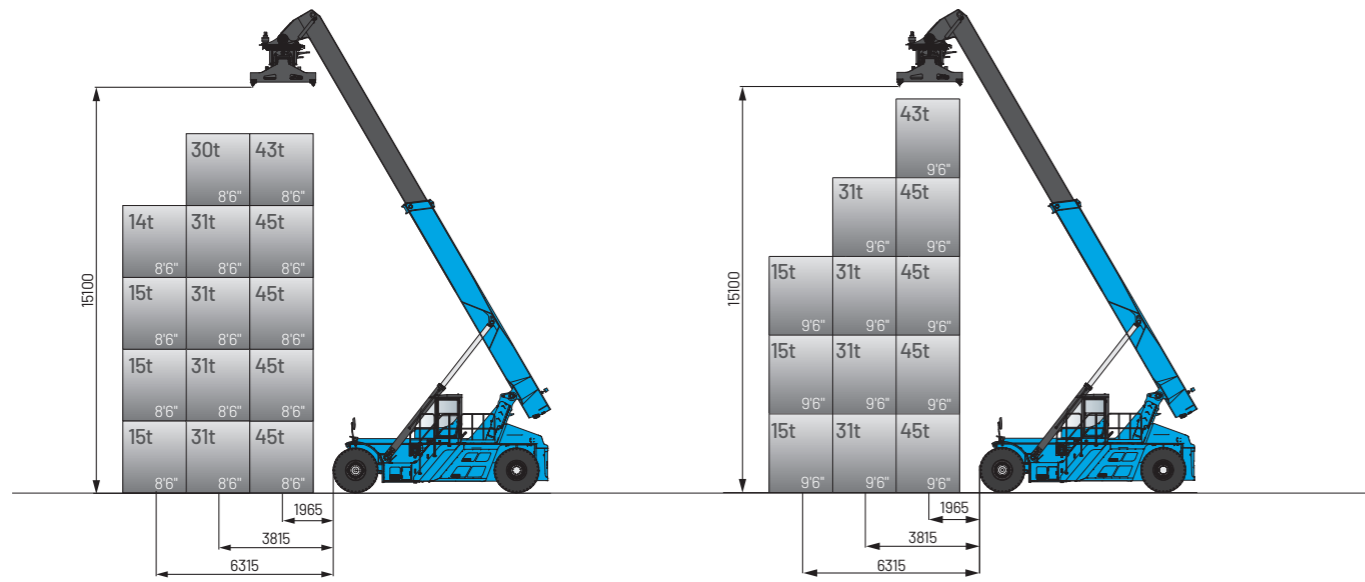
1 Euro stage V emissions, TAD1181VE engine, using electronically controlled high pressure common rail, fuel consumption is 3% lower than the previous generation.

2 Equipped with potential energy recovery technology, saves 20% energy compared with conventional products.

3 The products meet the European CE requirements.

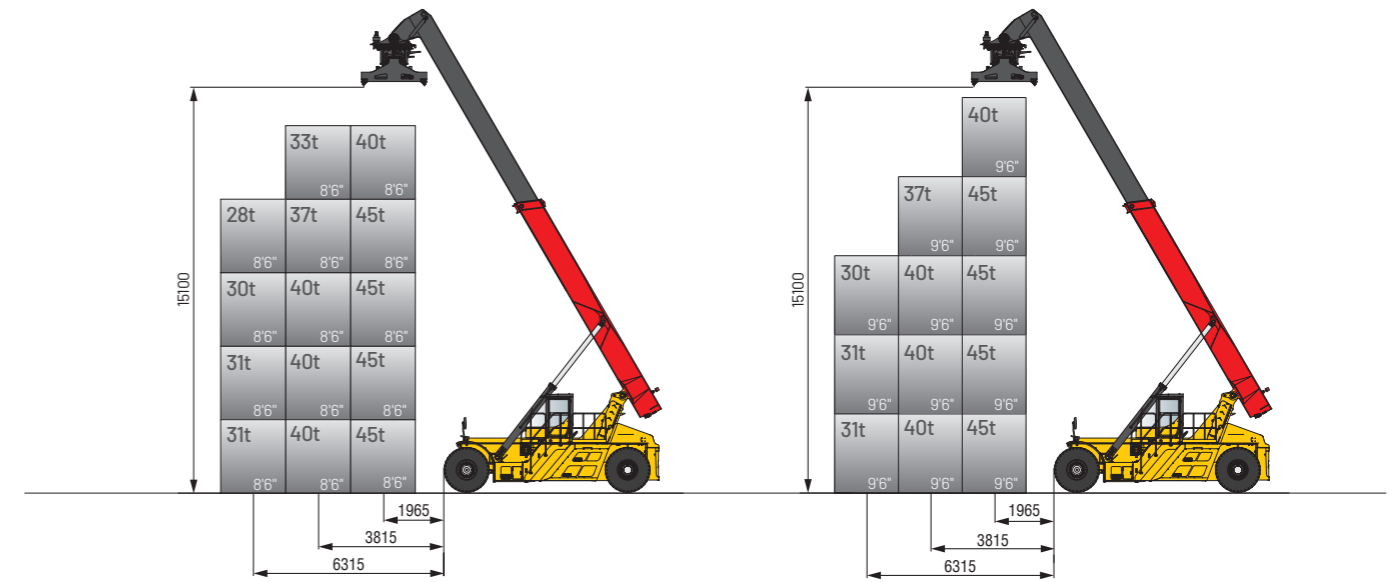
4531 Series Load Diagram

► Load Diagram



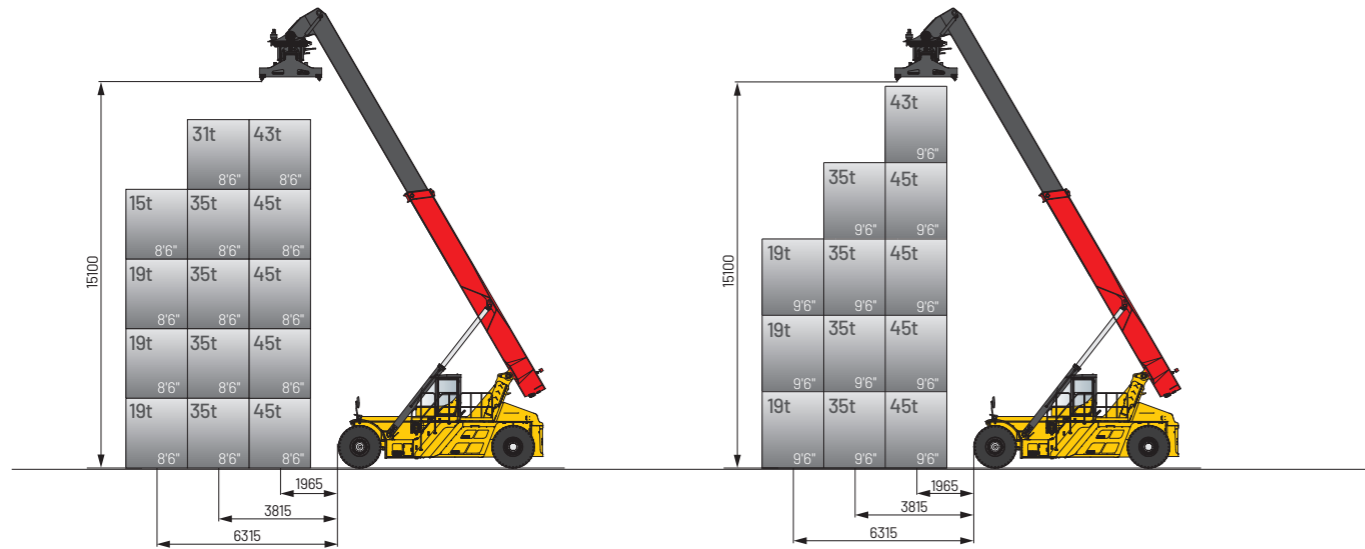
SRSC4540H Series Load Diagram

► Load Diagram



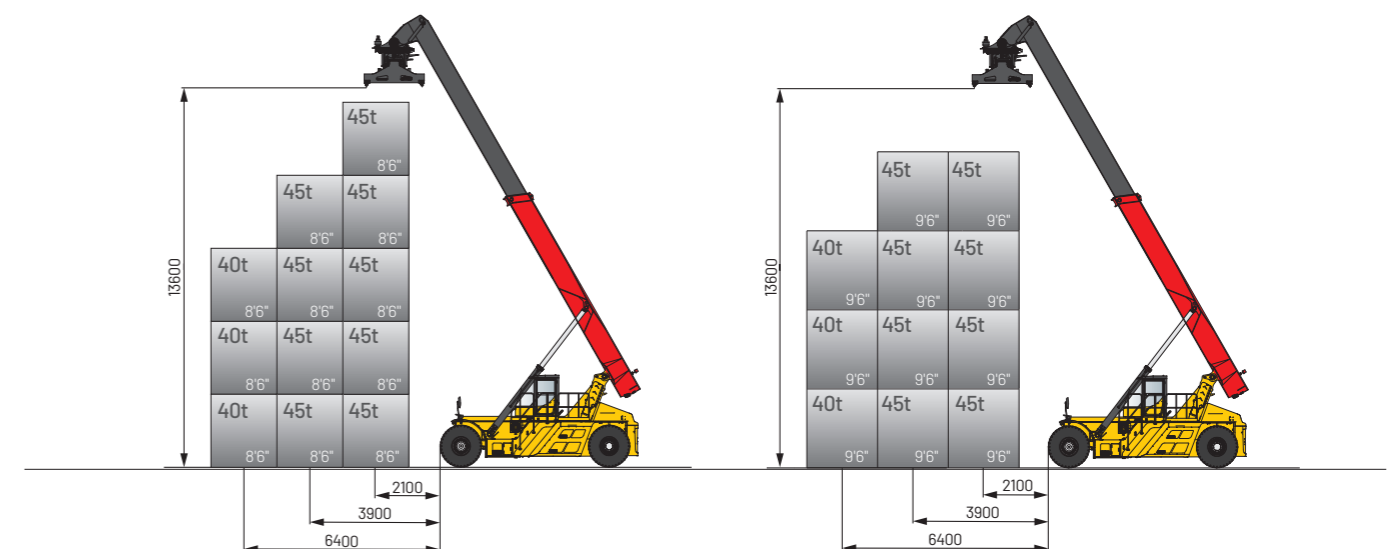
SRSC4535H Series Load Diagram

► Load Diagram



SRSC4545H Series Load Diagram

► Load Diagram



▶ SANY Spreader

▶ Spreader for 45t container

Sany 45t container spreader is suitable for stacking and handling ISO standard 20'/40'/45' containers with reach stackers. According to the market demand, Sany Marine developed a variety of container spreaders, with reasonable structure, excellent design, complete safety protection functions, cost-effective, and can fully meet the different needs of customers.

lightweight design

SDJ450H

- Rated Load: 45t
- Suitable For: ISO 20'/40'/45'container



▶ Ultra-High Reach Spreader

The SANY SDJ450S can lift both standard and high boxes with lowered outriggers, improving operational efficiency.

Flexible and efficient, with quick transitions

SDJ450S

- Rated Load: 45t
- Suitable For: ISO 20'/40'container



▶ Log spreader

Sany SWG310 spreader is suitable for the transfer, loading and unloading of logs or special materials. The product perfectly solves the transportation, loading and unloading problems of logs and other special materials, and brings huge profits to customers.

Log spreader

SWG310-R3

- Rated Load: 31t
- Suitable For: log



▶ Steel coil spreader

Sany STP450 spreader is suitable for the transfer, loading and unloading of steel coils, containers and bulk cargo.

Steel coil spreader

STP450

- Rated Load: 45t
- Suitable For: steel coil



▶ Turnover spreader (20feet)

Sany SDJ380R turnover spreader is mainly used for 360-degree overturning unloading of 20-foot open top container, which is environmentally friendly and efficient.

360°turn over spreader

SDJ380R

- Rated Load: 38t
- Suitable For: ISO 20'container



▶ Combined spreader

Sany SDJ450P spreader can not only complete the transfer and stacking operations of 20'/30'/35'/40'/45'ISO standard containers, but also carry out the transfer operations of EN284 non-stacking containers, so as to achieve the purpose of one machine and meet the needs of European and American joint operation mode.

Multi-condition, combined transport

SDJ450P

- Rated Load: 45t
- Suitable For: ISO 20'/30'/35'/40'/45'container
- EN284non-stacking container



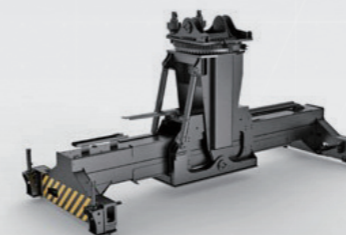
▶ Tilting spreader

Sany SDJS320 spreader can perfectly solves the transportation and unloading problems of special materials such as bulk materials, breaks through the bottleneck of bulk container loading process, and greatly improves the operation efficiency and environmental protection.

professional for bulk loading & unloading

SDJS320D

- Rated Load: 35t
- Tilt angle: 0~55°
- Suitable For: ISO 20'container



▶ Hook spreader

Sany SDJ700G spreader is suitable for the transfer, loading and unloading of wind turbine tower, which has simple structure and strong bearing capacity.

professional for wind turbine tower loading

SDJ700G

- Rated Load: 70t
- Suitable For: For: wind turbine tower, bulk cargo



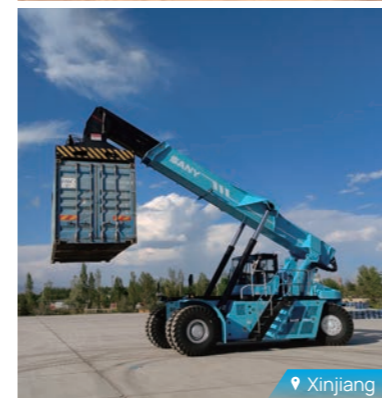
Accessory List

Optional Function	Optional Instructions
Reading light in cab	Locate at the top of the cab
Rear counterweight warning light	Add on rear counterweight
Heating facility for extreme cold environment	Heating for engine, hydraulic oil tank, cab etc Suitable for -30°C areas where the temperature is below -30 °c , external power supply used
Heating facility for ordinary cold environment	Mainly used in ordinary cold areas, suggested in areas where the ambient temperature is lower than -5° c, and mandatory in areas where the ambient temperature is lower than -15° c
Spreader twistlock counter	Spreader twistlock counter dash board
Engine timer	Engine timer dash board
Loudspeaker warning system	Inclu. Loudspeaker and siren
3 Meter visual reversing radar	Radar probe + camera, 3 meters detection range
5 Meter visual reversing radar	Radar probe + camera, 5 meters detection range
Radio	Optional, inclu. Radio speaker and antenna
Accurate weighing, off-load detection system	For sany spreader, with weighing, off-load detection, printing system
Traffic recorder	Nstalled in the cab, the main monitoring operation, including: camera + with 64g
Spreader and rear counterweight camera system	Include: 4 spreader cameras, 3m reversing radar and reversing camera (h-spreader)
Vehicle mounted intercom	Digital intercom includes
Handheld intercom	Handheld digital intercom
Tire pressure monitoring system	Used to monitor the reach stacker tire pressure
Light and heavy container selection function	By two warping switches to prevent accidental lifting of the train when unloading
Container weighing broadcast function	Load real-time broadcast of container weight
Passenger cab seat	Add a side seat next to the existing seat
Buckle alarm	Warning when seat belt is not fastened

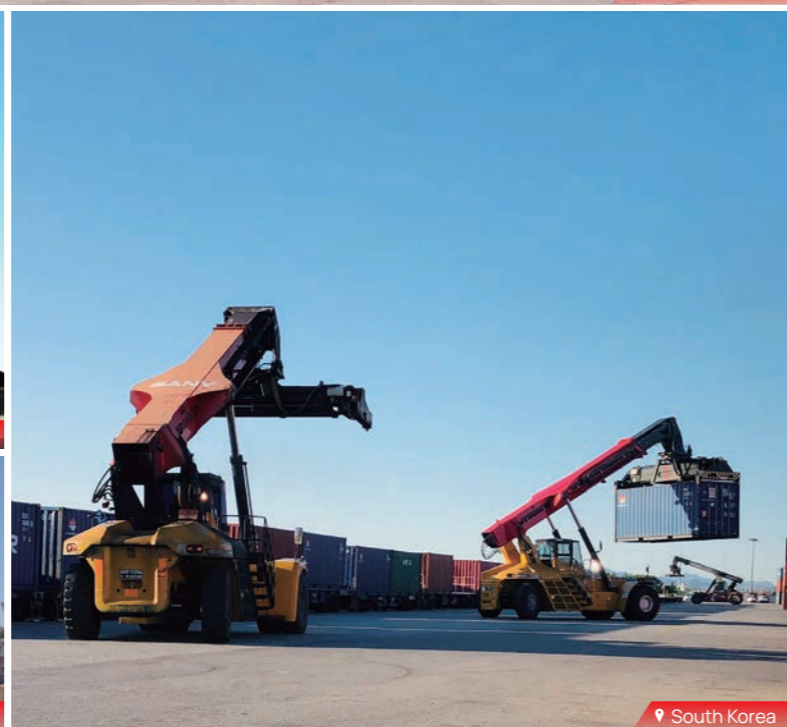
Accessory Details



Construction Case (Electric)



► Construction Cases



► Construction Cases



Electromagnetic spreader



Tilting spreader



Hook spreader



Steel coil spreader



Turnover spreader



Sanitation reach stacker



Log spreader





Sany Marine

SANY Industrial Park, Gaolan Port Economic and Development Zone, Zhuhai, Guangdong, China

Tel: +86-756-7266963 Service: +86-4008-87-8318 <https://www.sanyglobal.com>

Considering the continuous progress and update of SANY Marine technology, the technical parameters and configuration of products are modified and adjusted at any time, so this brochure is for reference only. The appearance, configuration and technical parameters of the specific model are subject to the actual model sold.

— 2025 —



<https://www.linkedin.com/company/sany-port-machinery/>

www.youtube.com/@SANY_Marine

钟灏(zhongh25) 2025-03-07